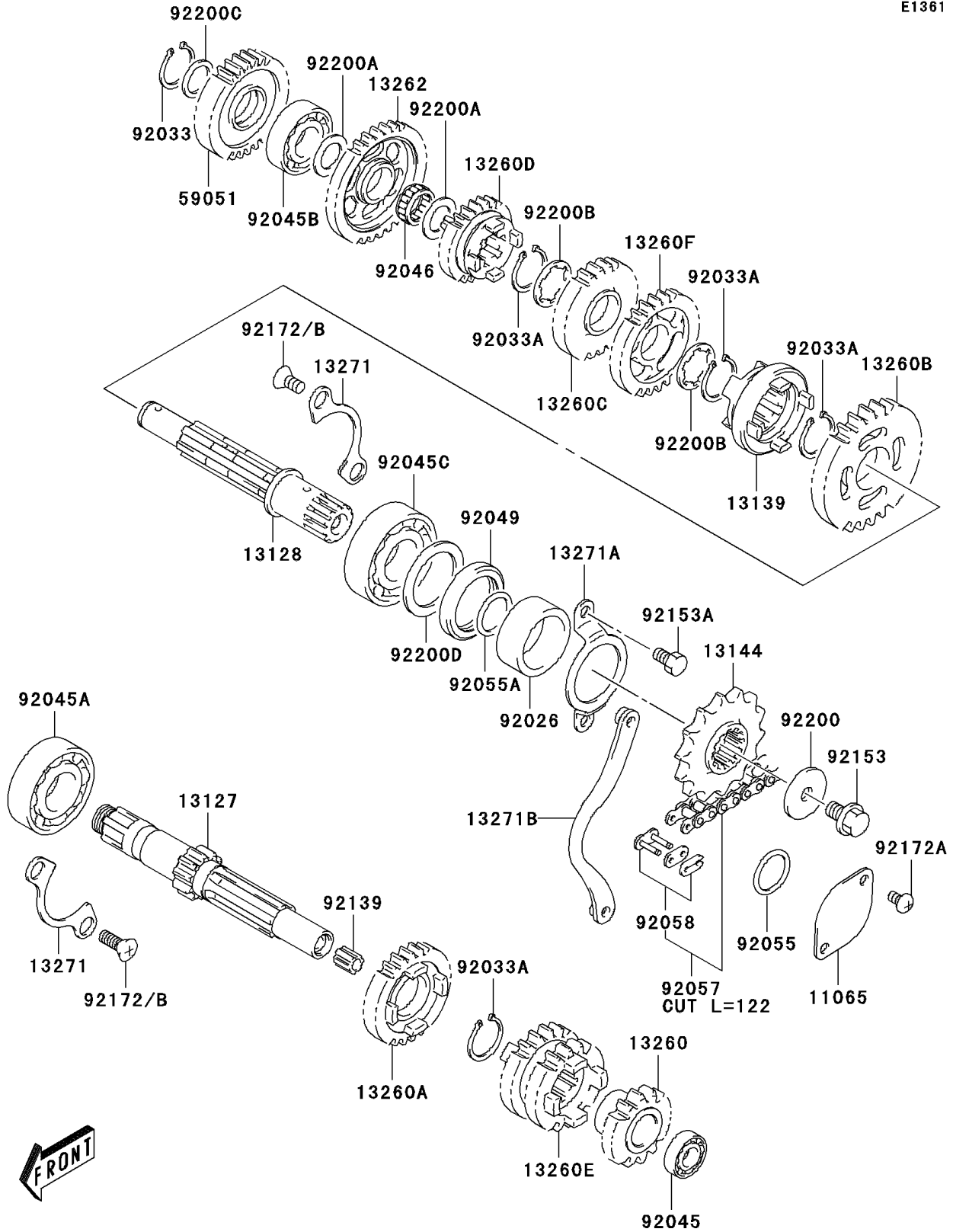


2003 KLX125 PARTS DIAGRAM

Transmission

E1361



2003 KLX125 PARTS LIST

Transmission

ITEM NAME	PART NUMBER	QUANTITY
CAP (Ref # 11065)	11065-S017	1
SHAFT-TRANSMISSION INPUT (Ref # 13127)	13127-S004	1
SHAFT-TRANSMISSION OUTPUT (Ref # 13128)	13128-S005	1
SHIFTER (Ref # 13139)	13139-S001	1
SPROCKET-OUTPUT,14T (Ref # 13144)	13144-S002	1
GEAR,INPUT 2ND,14T (Ref # 13260)	13260-S003	1
GEAR,INPUT 5TH,26T (Ref # 13260A)	13260-S005	1
GEAR,OUTPUT 2ND,26T (Ref # 13260B)	13260-S007	1
GEAR,OUTPUT 4TH,23T (Ref # 13260C)	13260-S009	1
GEAR,OUTPUT 5TH,24T (Ref # 13260D)	13260-S010	1
GEAR,INPUT 3RD&4TH,19T&21T (Ref # 13260E)	13260-S012	1
GEAR,OUTPUT 3RD,26T (Ref # 13260F)	13260-S013	1
GEAR,OUTPUT LOW,33T (Ref # 13262)	13262-S004	1
PLATE,DRIVE SHAFT BEARING (Ref # 13271)	13271-S019	2
PLATE,DRIVESHAFT OIL SEAL (Ref # 13271A)	13271-S020	1
PLATE,CHAIN GUIDE (Ref # 13271B)	13271-S024	1
GEAR-SPUR,KICK STARTER IDLE (Ref # 59051)	59051-S003	1
SPACER,ENGINE SPROCKET (Ref # 92026)	92026-S038	1
RING-SNAP (Ref # 92033)	92033-S017	1
RING-SNAP (Ref # 92033A)	92033-S020	4
BEARING-BALL (Ref # 92045)	92045-S023	1
BEARING-BALL,20X47X14 (Ref # 92045A)	92045-S024	1
BEARING-BALL,15X36X12 (Ref # 92045B)	92045-S027	1
BEARING-BALL,22X50X14 (Ref # 92045C)	92045-S034	1
BEARING-NEEDLE,15X19X7.8 (Ref # 92046)	92046-S007	1
SEAL-OIL,30X40X6 (Ref # 92049)	92049-S019	1
RING-O,D=2.4 (Ref # 92055)	92055-S007	1
RING-O,D=2.5 (Ref # 92055A)	92055-S034	1
CHAIN,DRIVE (Ref # 92057)	92057-S007	1

2003 KLX125 PARTS LIST

Transmission

ITEM NAME	PART NUMBER	QUANTITY
JOINT-CHAIN (Ref # 92058)	92058-S001	1
BUSHING (Ref # 92139)	92139-S007	1
BOLT (Ref # 92153)	92153-S015	1
BOLT (Ref # 92153A)	92153-S125	2
SCREW (Ref # 92172)	92172-S091	4
SCREW (Ref # 92172A)	92172-S110	2
WASHER (Ref # 92200)	92200-S052	1
WASHER (Ref # 92200A)	92200-S053	2
WASHER (Ref # 92200B)	92200-S059	2
WASHER (Ref # 92200C)	92200-S062	2
WASHER (Ref # 92200D)	92200-S065	1