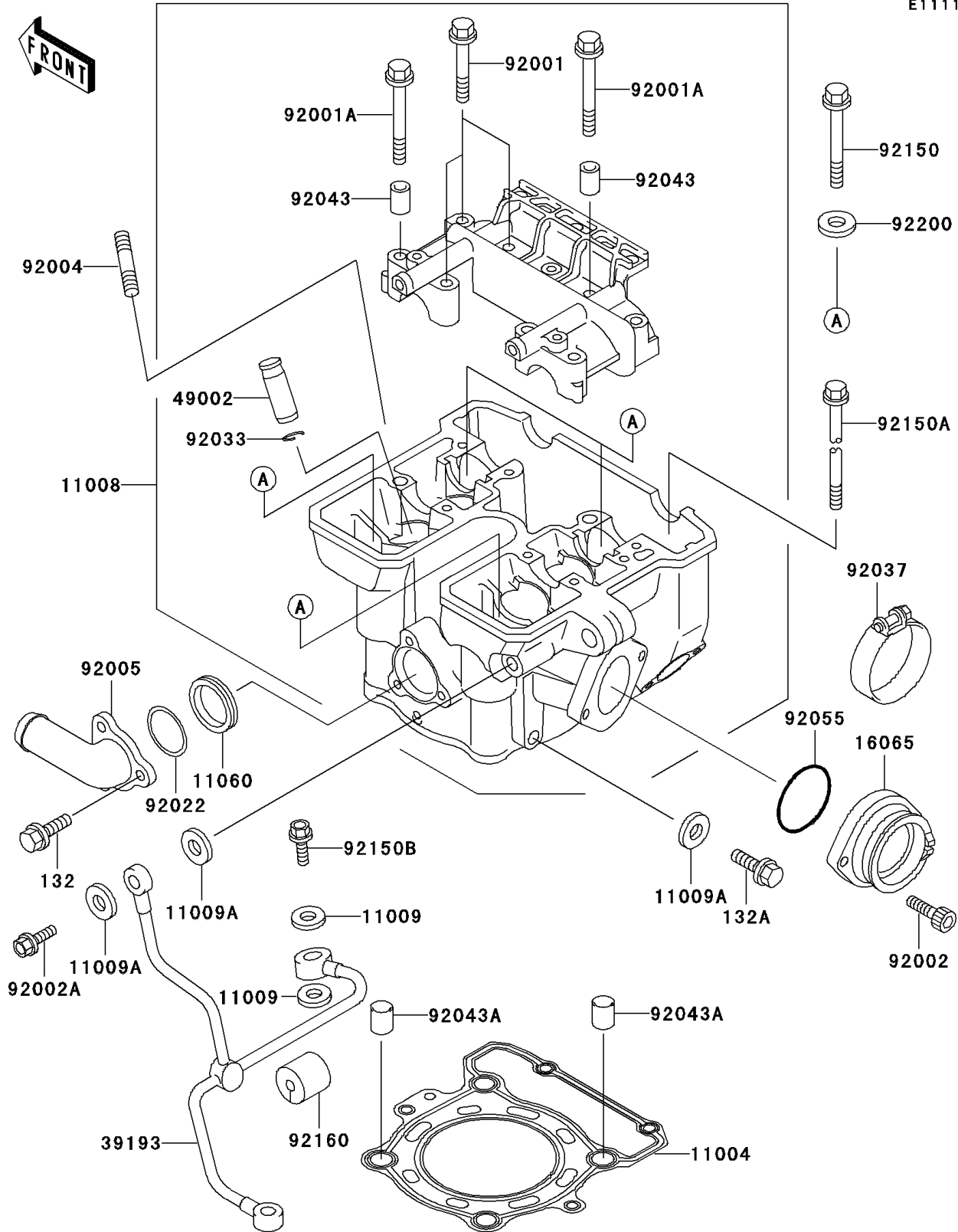


# 1994 KLX250R PARTS DIAGRAM

Cylinder Head

E1111



# 1994 KLX250R PARTS LIST

## Cylinder Head

ITEM NAME	PART NUMBER	QUANTITY
BOLT-FLANGED-SMALL (Ref # 132)	132Y0612	3
BOLT-FLANGED-SMALL (Ref # 132A)	132Y0810	1
GASKET-HEAD (Ref # 11004)	11004-1249	1
HEAD-COMP-CYLINDER (Ref # 11008)	11008-1277	1
GASKET,10X14.5X1.5 (Ref # 11009)	11009-1105	2
GASKET,OIL PIPE,8.2X14X1.0 (Ref # 11009A)	11009-1344	5
GASKET,THERMOSTAT (Ref # 11060)	11060-1300	1
HOLDER-CARBURETOR (Ref # 16065)	16065-1279	1
PIPE-OIL (Ref # 39193)	39193-1011	1
GUIDE-VALVE (Ref # 49002)	49002-1126	AR
BOLT,FLANGED,6X38 (Ref # 92001)	92001-1105	6
BOLT,6X46 (Ref # 92001A)	92001-1872	2
BOLT,6X16 (Ref # 92002)	92002-1143	2
BOLT,BANJO,8X20 (Ref # 92002A)	92002-1618	2
STUD,8X22 (Ref # 92004)	92004-1217	2
FITTING (Ref # 92005)	92005-1258	1
WASHER,25.3X30X1 (Ref # 92022)	92022-161	1
RING-SNAP (Ref # 92033)	92033-1247	4
CLAMP,ID=53,BLACK (Ref # 92037)	92037-1304	1
PIN,6.2X8X14 (Ref # 92043)	92043-1263	2
PIN,10.1X12X14 (Ref # 92043A)	92043-4009	2
RING-O (Ref # 92055)	92055-1255	1
BOLT,10X165 (Ref # 92150)	92150-1368	4
BOLT,6X135 (Ref # 92150A)	92150-1552	2
BOLT,BANJO,10X23 (Ref # 92150B)	92150-1641	1
DAMPER,6.3X22X20 (Ref # 92160)	92160-1013	1
WASHER,10.5X19X2.3 (Ref # 92200)	92200-1042	4