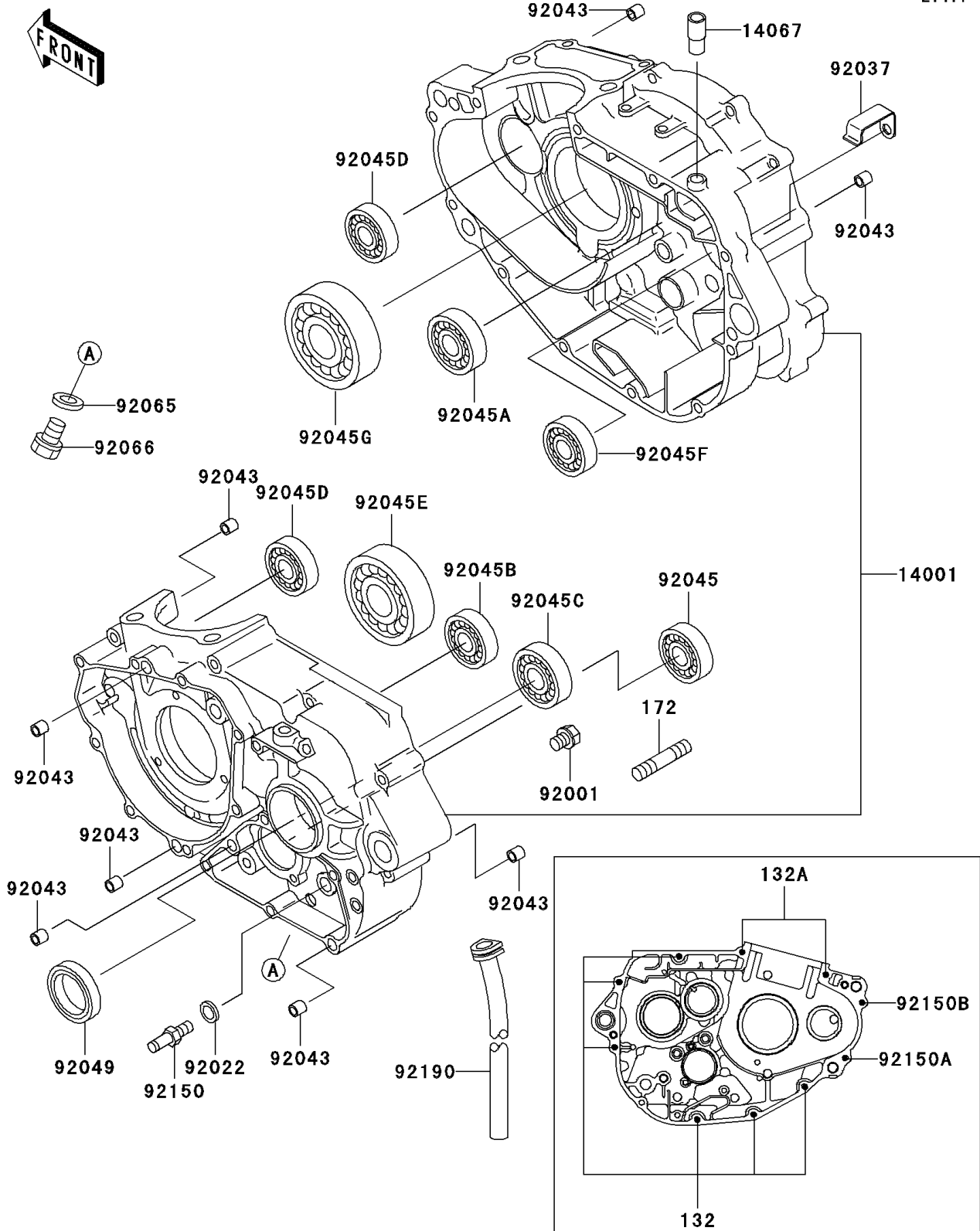


# 1995 KLX250R PARTS DIAGRAM

Crankcase

E1411



# 1995 KLX250R PARTS LIST

## Crankcase

| ITEM NAME                                 | PART NUMBER | QUANTITY |
|---|-------------|----------|
| BOLT-FLANGED-SMALL (Ref # 132)            | 132Y0650    | 6        |
| BOLT-FLANGED-SMALL (Ref # 132A)           | 132Y0670    | 2        |
| BOLT-STUD,6X80 (Ref # 172)                | 172G0680    | 1        |
| SET-CRANKCASE (Ref # 14001)               | 14001-5318  | 1        |
| FITTING,BREATHER (Ref # 14067)            | 14067-006   | 1        |
| BOLT,W/WASHER,6X14 (Ref # 92001)          | 92001-1829  | 2        |
| WASHER,10X15X1.0 (Ref # 92022)            | 92022-1973  | 1        |
| CLAMP,HARNESS (Ref # 92037)               | 92037-1318  | 1        |
| PIN,6.2X8X14 (Ref # 92043)                | 92043-1263  | 8        |
| BEARING-BALL,#6905 (Ref # 92045)          | 92045-036   | 1        |
| BEARING-BALL,TMB204 JR (Ref # 92045A)     | 92045-1041  | 1        |
| BEARING-BALL,TMB203LU (Ref # 92045B)      | 92045-1287  | 1        |
| BEARING-BALL,TMB205LU (Ref # 92045C)      | 92045-1288  | 1        |
| BEARING-BALL,TMB302JR2C3 (Ref # 92045D)   | 92045-1289  | 2        |
| BEARING-BALL,TMB207JR2C4 (Ref # 92045E)   | 92045-1290  | 1        |
| BEARING-BALL,TMB203 (Ref # 92045F)        | 92045-1291  | 1        |
| BEARING-BALL,TMB306JR2C3 (Ref # 92045G)   | 92045-1292  | 1        |
| SEAL-OIL,TC32457 (Ref # 92049)            | 92049-1159  | 1        |
| GASKET,10.5X16X1,DRAIN PLUG (Ref # 92065) | 92065-058   | 1        |
| PLUG,DRAIN (Ref # 92066)                  | 92066-1241  | 1        |
| BOLT,RETURN SPRING (Ref # 92150)          | 92150-1803  | 1        |
| BOLT,SOCKET,6X50 (Ref # 92150A)           | 92150-1874  | 1        |
| BOLT,SOCKET,6X35 (Ref # 92150B)           | 92150-1875  | 1        |
| TUBE (Ref # 92190)                        | 92190-1493  | 1        |