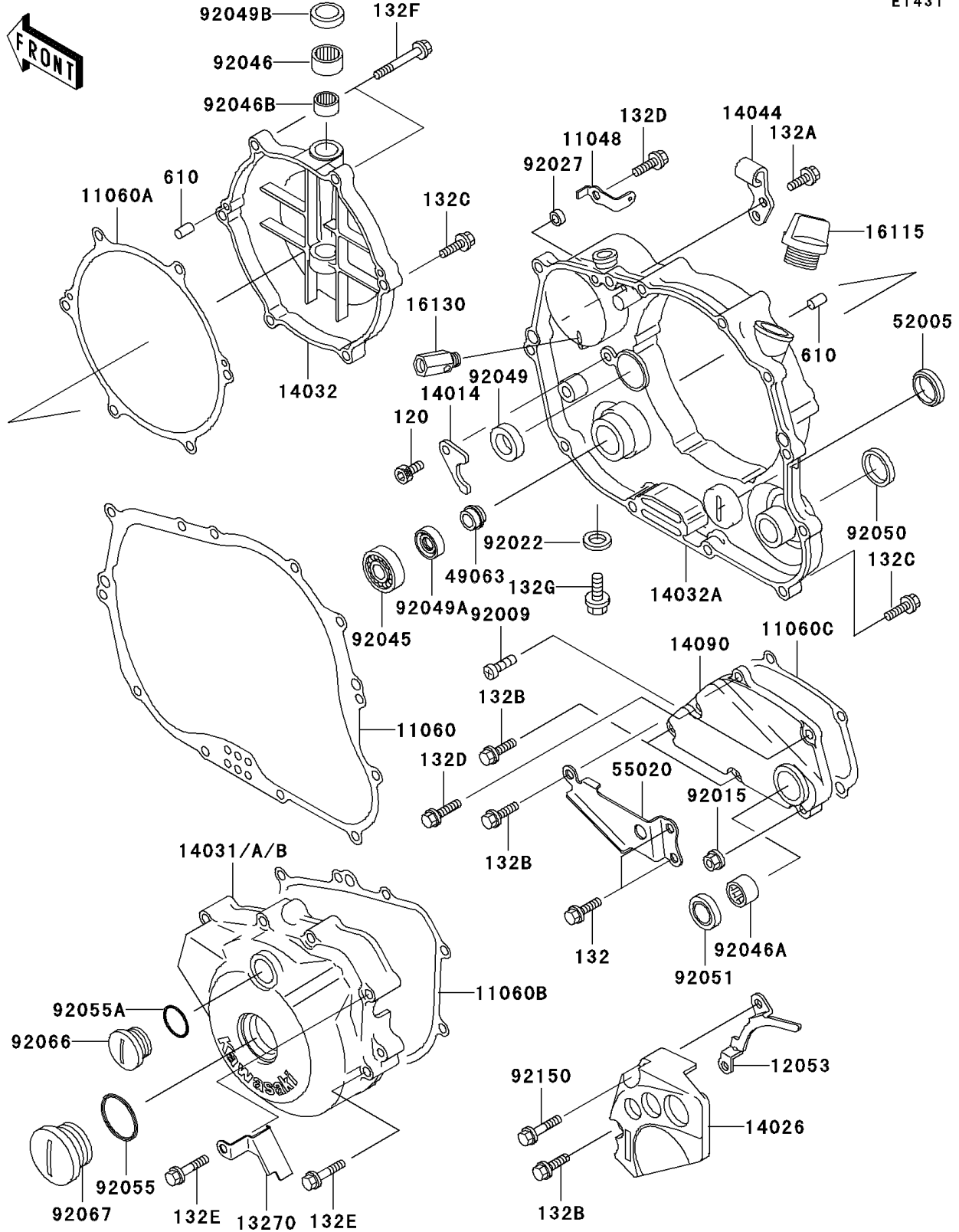


# 1995 KLX250R PARTS DIAGRAM

Engine Cover(s)

E1431



# 1995 KLX250R PARTS LIST

## Engine Cover(s)

| ITEM NAME                                | PART NUMBER | QUANTITY |
|--|-------------|----------|
| BOLT-SOCKET,6X10 (Ref # 120)             | 120P0610    | 1        |
| BRACKET (Ref # 11048)                    | 11048-1300  | 1        |
| GASKET,CLUTCH COVER INNER (Ref # 11060)  | 11060-1324  | 1        |
| GASKET,CLUTCH COVER OUTER (Ref # 11060A) | 11060-1325  | 1        |
| GASKET,GENERATOR COVER (Ref # 11060B)    | 11060-1326  | 1        |
| GASKET,TRANSMISSION COVER (Ref # 11060C) | 11060-1327  | 1        |
| GUIDE-CHAIN (Ref # 12053)                | 12053-1337  | 1        |
| PLATE (Ref # 13270)                      | 13270-1146  | 1        |
| PLATE-POSITION (Ref # 14014)             | 14014-1062  | 1        |
| COVER-CHAIN (Ref # 14026)                | 14026-1186  | 1        |
| COVER-GENERATOR (Ref # 14031A)           | 14031-1301  | 1        |
| COVER-CLUTCH,OUTER (Ref # 14032)         | 14032-1335  | 1        |
| COVER-CLUTCH,INNER (Ref # 14032A)        | 14032-1359  | 1        |
| HOLDER-CABLE (Ref # 14044)               | 14044-1078  | 1        |
| COVER,TRANSMISSION (Ref # 14090)         | 14090-1285  | 1        |
| CAP-OIL FILLER (Ref # 16115)             | 16115-018   | 1        |
| VALVE-ASSY-RELIEF (Ref # 16130)          | 16130-1001  | 1        |
| SEAL-MECHANICAL,WATER PUMP (Ref # 49063) | 49063-1002  | 1        |
| GAUGE,OIL LEVEL (Ref # 52005)            | 52005-1009  | 1        |
| GUARD,TRANSMISSION COVER (Ref # 55020)   | 55020-1460  | 1        |
| SCREW (Ref # 92009)                      | 92009-1726  | 1        |
| NUT,FLANGED,6MM (Ref # 92015)            | 92015-1193  | 1        |
| WASHER,8.2X14X1.0 (Ref # 92022)          | 92022-1488  | 1        |
| COLLAR,6.5X10.5X4.5 (Ref # 92027)        | 92027-1885  | 1        |
| BEARING-BALL,6901 (Ref # 92045)          | 92045-1246  | 1        |
| BEARING-NEEDLE,HK1210 (Ref # 92046)      | 92046-1010  | 1        |
| BEARING-NEEDLE,HK1312 (Ref # 92046A)     | 92046-1148  | 1        |
| BEARING-NEEDLE (Ref # 92046B)            | 92046-1230  | 1        |
| SEAL-OIL (Ref # 92049)                   | 92049-1191  | 1        |

# 1995 KLX250R PARTS LIST

## Engine Cover(s)

| ITEM NAME                        | PART NUMBER | QUANTITY |
|----------------------------------|-------------|----------|
| SEAL-OIL,AC037AE0 (Ref # 92049A) | 92049-1228  | 1        |
| SEAL-OIL (Ref # 92049B)          | 92049-1262  | 1        |
| SEAL-OIL (Ref # 92050)           | 92050-078   | 1        |
| SEAL-OIL,TB13225.5 (Ref # 92051) | 92051-005   | 1        |
| RING-O (Ref # 92055)             | 92055-091   | 1        |
| RING-O (Ref # 92055A)            | 92055-1146  | 1        |
| PLUG (Ref # 92066)               | 92066-1397  | 1        |
| PLUG,RELEASE,30X8 (Ref # 92067)  | 92067-024   | 1        |
| BOLT,6X35 (Ref # 92150)          | 92150-1137  | 1        |
| BOLT-FLANGED-SMALL (Ref # 132)   | 132Y0612    | 2        |
| BOLT-FLANGED-SMALL (Ref # 132A)  | 132Y0616    | 2        |
| BOLT-FLANGED-SMALL (Ref # 132B)  | 132Y0620    | 4        |
| BOLT-FLANGED-SMALL (Ref # 132C)  | 132Y0625    | 12       |
| BOLT-FLANGED-SMALL (Ref # 132D)  | 132Y0630    | 2        |
| BOLT-FLANGED-SMALL (Ref # 132E)  | 132Y0640    | 8        |
| BOLT-FLANGED-SMALL (Ref # 132F)  | 132Y0670    | 2        |
| BOLT-FLANGED-SMALL (Ref # 132G)  | 132Y0810    | 1        |
| ROLLER,4X8 (Ref # 610)           | 610A0408    | 4        |