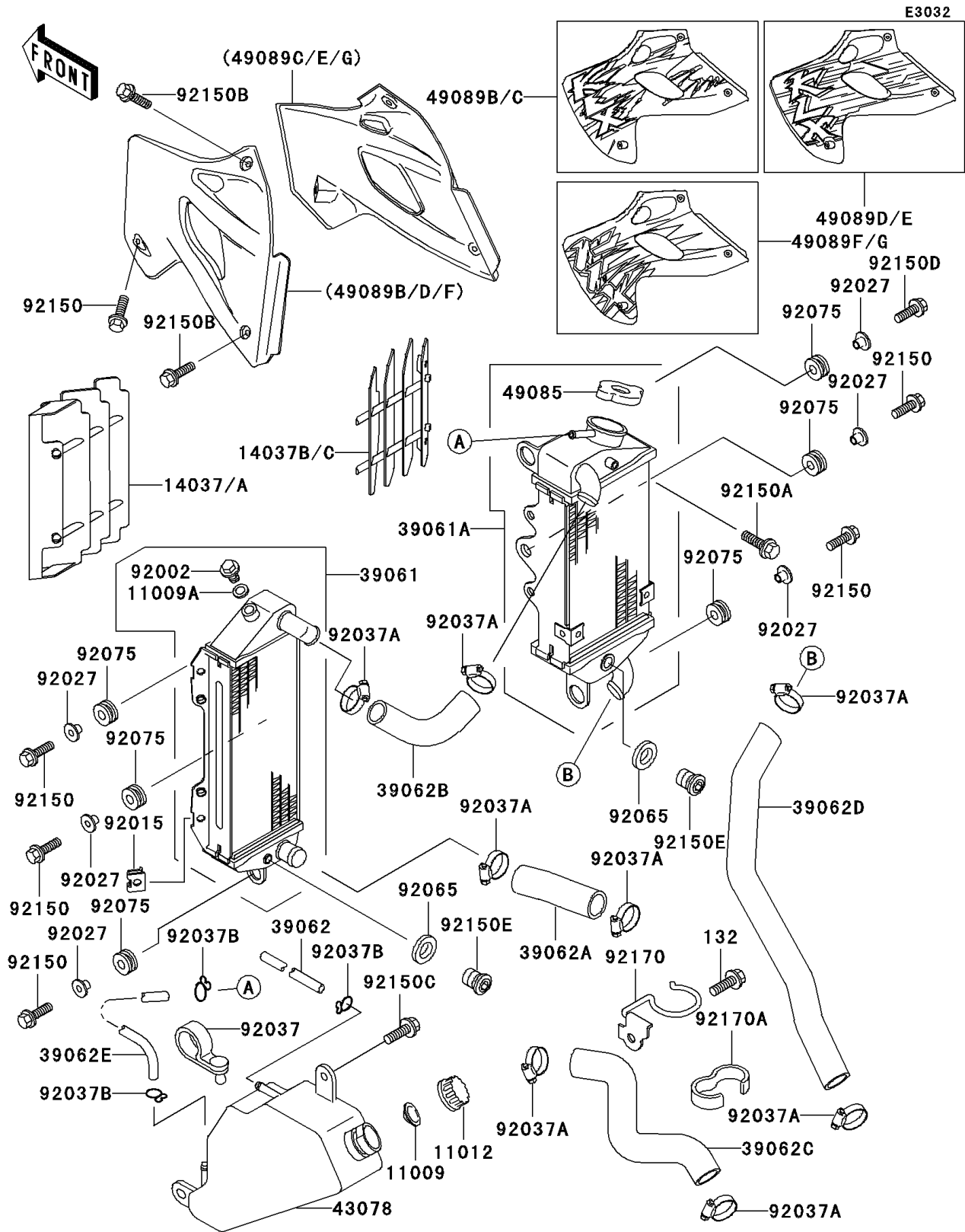


1995 KLX250R PARTS DIAGRAM

Radiator



1995 KLX250R PARTS LIST

Radiator

| ITEM NAME | PART NUMBER | QUANTITY |
|---|---------------|----------|
| GASKET,RESERVOIR TANK CAP (Ref # 11009) | 11009-1145 | 1 |
| GASKET,DRAIN BOLT (Ref # 11009A) | 11009-1152 | 1 |
| CAP (Ref # 11012) | 11012-1084 | 1 |
| SCREEN,L.GREEN (Ref # 14037A) | 14037-1099-6W | 1 |
| SCREEN,RH,L.GREEN (Ref # 14037C) | 14037-1121-6W | 1 |
| RADIATOR-ASSY,LH (Ref # 39061) | 39061-1193 | 1 |
| RADIATOR-ASSY,RH (Ref # 39061A) | 39061-1194 | 1 |
| HOSE-COOLING,5X9X420 (Ref # 39062) | 39062-1315 | 1 |
| HOSE-COOLING,HEAD-RADIATOR (Ref # 39062A) | 39062-1535 | 1 |
| HOSE-COOLING,RADIATOR,L-R (Ref # 39062B) | 39062-1536 | 1 |
| HOSE-COOLING,PUMP-CYLINDER (Ref # 39062C) | 39062-1563 | 1 |
| HOSE-COOLING,RADIATOR-PUMP (Ref # 39062D) | 39062-1564 | 1 |
| HOSE-COOLING,5X9X1080 (Ref # 39062E) | 39062-1569 | 1 |
| RESERVOIR (Ref # 43078) | 43078-1140 | 1 |
| CAP-ASSY-PRESSURE (Ref # 49085) | 49085-1066 | 1 |
| SHROUD-ENGINE,LH,L.GREEN (Ref # 49089D) | 49089-5215-6W | 1 |
| SHROUD-ENGINE,RH,L.GREEN (Ref # 49089E) | 49089-5216-6W | 1 |
| BOLT,RADIATOR DRAIN (Ref # 92002) | 92002-1682 | 1 |
| NUT (Ref # 92015) | 92015-1487 | 1 |
| COLLAR,L=11.1 (Ref # 92027) | 92027-194 | 6 |
| CLAMP,SPEED,L=58 (Ref # 92037) | 92037-1163 | 1 |
| CLAMP,COOLING HOSE (Ref # 92037A) | 92037-1589 | 8 |
| CLAMP (Ref # 92037B) | 92037-1712 | 3 |
| GASKET,10.5X16X1,DRAIN PLUG (Ref # 92065) | 92065-058 | 2 |
| DAMPER (Ref # 92075) | 92075-209 | 6 |
| BOLT,6X20 (Ref # 92150) | 92150-1339 | 7 |
| BOLT,6X14 (Ref # 92150A) | 92150-1340 | 1 |
| BOLT,6X12 (Ref # 92150B) | 92150-1435 | 4 |
| BOLT,FLANGED,6X14 (Ref # 92150C) | 92150-1504 | 1 |

1995 KLX250R PARTS LIST

Radiator

| ITEM NAME | PART NUMBER | QUANTITY |
|-------------------------------------|-------------|----------|
| BOLT,FLANGED,6X25 (Ref # 92150D) | 92150-1507 | 1 |
| BOLT,10X10 (Ref # 92150E) | 92150-1867 | 2 |
| CLAMP (Ref # 92170) | 92170-1357 | 1 |
| CLAMP (Ref # 92170A) | 92170-1419 | 1 |
| BOLT-FLANGED-SMALL,6X10 (Ref # 132) | 132J0610 | 1 |