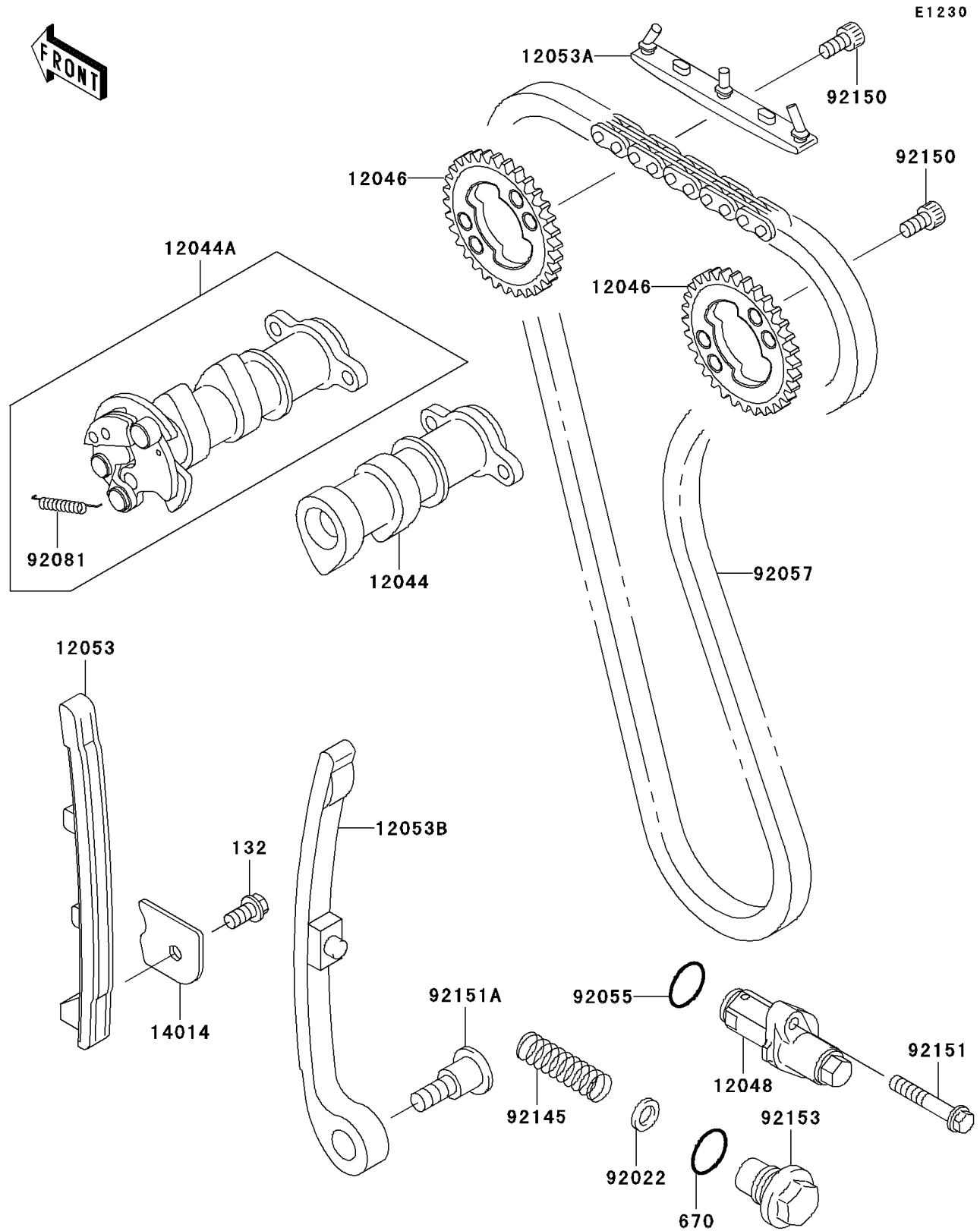


2006 KLX250S PARTS DIAGRAM

Camshaft(s)/Tensioner



2006 KLX250S PARTS LIST

Camshaft(s)/Tensioner

| ITEM NAME | PART NUMBER | QUANTITY |
|---------------------------------------|-------------|----------|
| BOLT-FLANGED-SMALL,6X12 (Ref # 132) | 132J0612 | 1 |
| O RING,18MM (Ref # 670) | 670B2018 | 1 |
| CAMSHAFT-VALVE,INTAKE (Ref # 12044) | 12044-1327 | 1 |
| CAMSHAFT-VALVE,EXHAUST (Ref # 12044A) | 12044-1365 | 1 |
| SPROCKET,CAMSHAFT,32T (Ref # 12046) | 12046-0001 | 2 |
| TENSIONER-ASSY (Ref # 12048) | 12048-1140 | 1 |
| GUIDE-CHAIN,FR (Ref # 12053) | 12053-1315 | 1 |
| GUIDE-CHAIN,UPP (Ref # 12053A) | 12053-1317 | 1 |
| GUIDE-CHAIN,RR (Ref # 12053B) | 12053-1391 | 1 |
| PLATE-POSITION (Ref # 14014) | 14014-1130 | 1 |
| WASHER,8.5X13.5X2 (Ref # 92022) | 92022-1108 | 1 |
| RING-O,18.8X1.9 (Ref # 92055) | 92055-086 | 1 |
| CHAIN,CAM,92RH2010 (Ref # 92057) | 92057-1416 | 1 |
| SPRING,DECOMPRESSOR (Ref # 92081) | 92081-1626 | 1 |
| SPRING,TENSIONER (Ref # 92145) | 92145-0367 | 1 |
| BOLT,SOCKET,6X10 (Ref # 92150) | 92150-1650 | 4 |
| BOLT,6X35 (Ref # 92151) | 92151-1135 | 2 |
| BOLT,L=30 (Ref # 92151A) | 92151-1154 | 1 |
| BOLT,TENSIONER (Ref # 92153) | 92153-0650 | 1 |