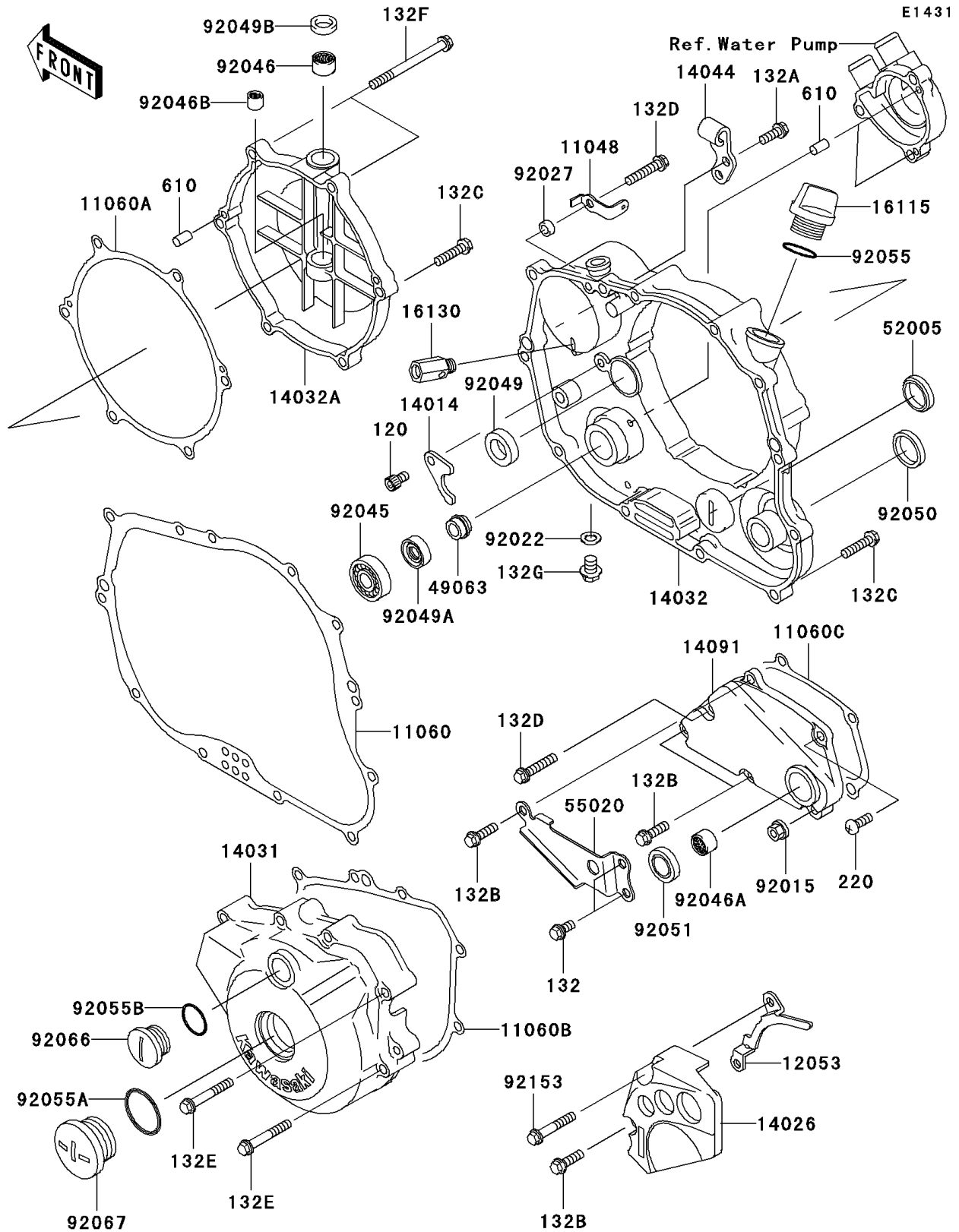


2005 KLX300R PARTS DIAGRAM

Engine Cover(s)



2005 KLX300R PARTS LIST

Engine Cover(s)

ITEM NAME	PART NUMBER	QUANTITY
BRACKET (Ref # 11048)	11048-1300	1
GASKET,CLUTCH COVER INNER (Ref # 11060)	11060-1324	1
GASKET,CLUTCH COVER OUTER (Ref # 11060A)	11060-1325	1
GASKET,GENERATOR COVER (Ref # 11060B)	11060-1326	1
GASKET,TRANSMISSION COVER (Ref # 11060C)	11060-1327	1
GUIDE-CHAIN (Ref # 12053)	12053-1337	1
PLATE-POSITION (Ref # 14014)	14014-1062	1
COVER-CHAIN (Ref # 14026)	14026-0011	1
COVER-GENERATOR (Ref # 14031)	14031-1301	1
COVER-CLUTCH (Ref # 14032)	14032-0007	1
COVER-CLUTCH,OUTER (Ref # 14032A)	14032-0008	1
HOLDER-CABLE (Ref # 14044)	14044-1078	1
COVER,TRANSMISSION (Ref # 14091)	14091-0026	1
CAP-OIL FILLER (Ref # 16115)	16115-1053	1
VALVE-ASSY-RELIEF (Ref # 16130)	16130-1001	1
SEAL-MECHANICAL,WATER (Ref # 49063)	49063-1055	1
GAUGE,OIL LEVEL (Ref # 52005)	52005-1009	1
GUARD,TRANSMISSION COVER (Ref # 55020)	55020-1460	1
NUT,FLANGED,6MM (Ref # 92015)	92015-1193	1
WASHER,8.2X14X1.0 (Ref # 92022)	92022-1488	1
COLLAR,6.5X10.5X4.5 (Ref # 92027)	92027-1885	1
BEARING-BALL,6901 (Ref # 92045)	92045-1246	1
BEARING-NEEDLE,HK1210 (Ref # 92046)	92046-1010	1
BEARING-NEEDLE,HK1312 (Ref # 92046A)	92046-1148	1
BEARING-NEEDLE (Ref # 92046B)	92046-1230	1
SEAL-OIL (Ref # 92049)	92049-1191	1
SEAL-OIL,AC037AE0 (Ref # 92049A)	92049-1228	1
SEAL-OIL (Ref # 92049B)	92049-1262	1
SEAL-OIL (Ref # 92050)	92050-078	1

2005 KLX300R PARTS LIST

Engine Cover(s)

ITEM NAME	PART NUMBER	QUANTITY
SEAL-OIL,TB13225.5 (Ref # 92051)	92051-005	1
RING-O (Ref # 92055)	92055-012	1
RING-O (Ref # 92055A)	92055-091	1
RING-O (Ref # 92055B)	92055-1146	1
PLUG (Ref # 92066)	92066-1397	1
PLUG,30X8 (Ref # 92067)	92067-024	1
BOLT,6X35 (Ref # 92153)	92153-0796	1
BOLT-SOCKET,6X10 (Ref # 120)	120P0610	1
BOLT-FLANGED-SMALL (Ref # 132)	132Y0612	2
BOLT-FLANGED-SMALL (Ref # 132A)	132Y0616	2
BOLT-FLANGED-SMALL (Ref # 132B)	132Y0620	4
BOLT-FLANGED-SMALL (Ref # 132C)	132Y0625	12
BOLT-FLANGED-SMALL (Ref # 132D)	132Y0630	2
BOLT-FLANGED-SMALL (Ref # 132E)	132Y0640	8
BOLT-FLANGED-SMALL (Ref # 132F)	132Y0670	2
BOLT-FLANGED-SMALL (Ref # 132G)	132Y0810	1
SCREW-PAN-CROS (Ref # 220)	220X0616	1
ROLLER,4X8 (Ref # 610)	610A0408	4