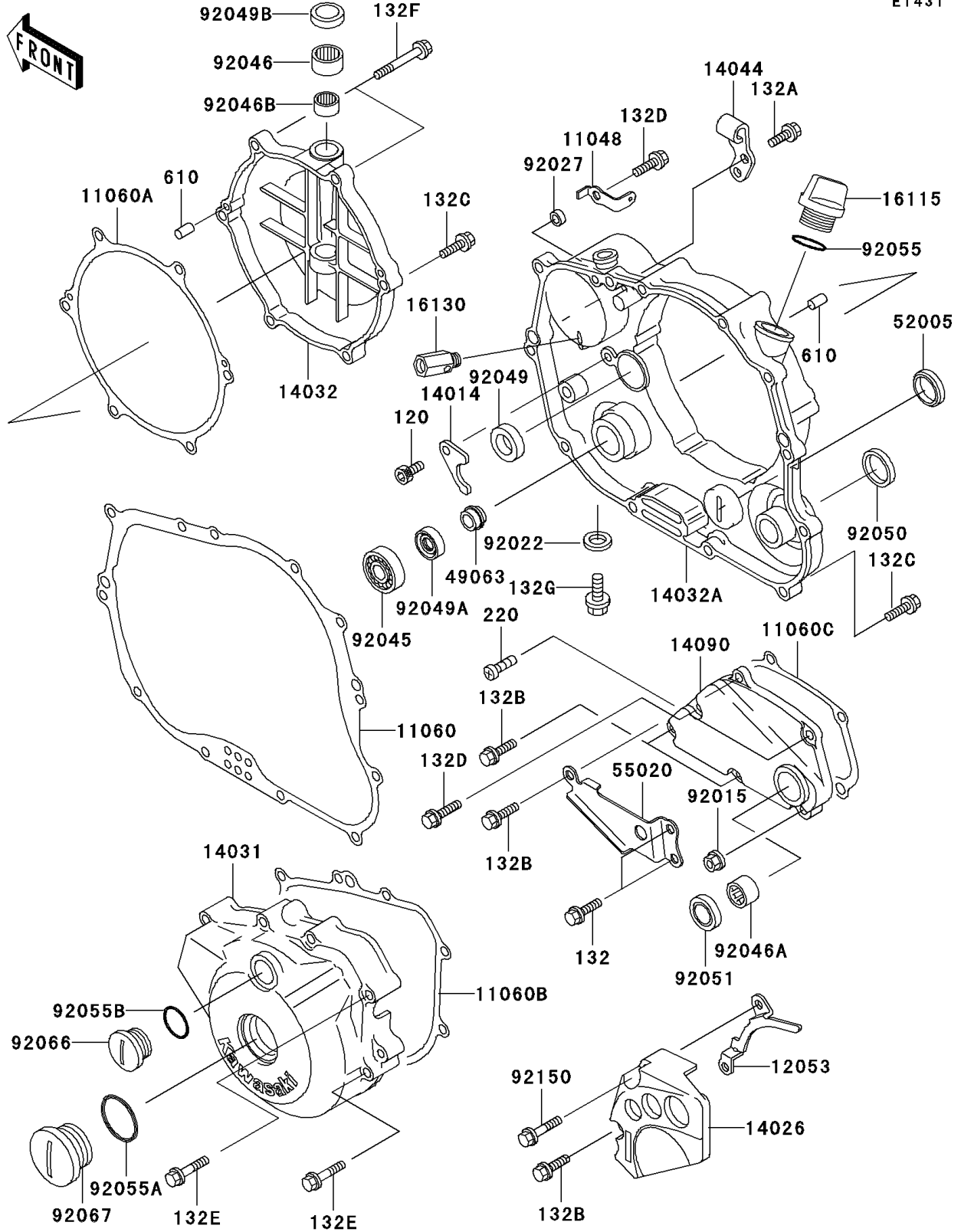


2004 KLX300R PARTS DIAGRAM

Engine Cover(s)

E1431



2004 KLX300R PARTS LIST

Engine Cover(s)

| ITEM NAME | PART NUMBER | QUANTITY |
|--|-------------|----------|
| BOLT-SOCKET,6X10 (Ref # 120) | 120P0610 | 1 |
| BOLT-FLANGED-SMALL (Ref # 132) | 132Y0612 | 2 |
| BOLT-FLANGED-SMALL (Ref # 132A) | 132Y0616 | 2 |
| BOLT-FLANGED-SMALL (Ref # 132B) | 132Y0620 | 4 |
| BRACKET (Ref # 11048) | 11048-1300 | 1 |
| GASKET,CLUTCH COVER INNER (Ref # 11060) | 11060-1324 | 1 |
| GASKET,CLUTCH COVER OUTER (Ref # 11060A) | 11060-1325 | 1 |
| GASKET,GENERATOR COVER (Ref # 11060B) | 11060-1326 | 1 |
| GASKET,TRANSMISSION COVER (Ref # 11060C) | 11060-1327 | 1 |
| GUIDE-CHAIN (Ref # 12053) | 12053-1337 | 1 |
| PLATE-POSITION (Ref # 14014) | 14014-1062 | 1 |
| COVER-CHAIN (Ref # 14026) | 14026-1186 | 1 |
| COVER-GENERATOR (Ref # 14031) | 14031-1301 | 1 |
| COVER-CLUTCH,OUTER (Ref # 14032) | 14032-1335 | 1 |
| COVER-CLUTCH (Ref # 14032A) | 14032-1438 | 1 |
| HOLDER-CABLE (Ref # 14044) | 14044-1078 | 1 |
| COVER,TRANSMISSION (Ref # 14090) | 14090-1285 | 1 |
| CAP-OIL FILLER (Ref # 16115) | 16115-1053 | 1 |
| VALVE-ASSY-RELIEF (Ref # 16130) | 16130-1001 | 1 |
| SEAL-MECHANICAL,WATER (Ref # 49063) | 49063-1055 | 1 |
| GAUGE,OIL LEVEL (Ref # 52005) | 52005-1009 | 1 |
| GUARD,TRANSMISSION COVER (Ref # 55020) | 55020-1460 | 1 |
| NUT,FLANGED,6MM (Ref # 92015) | 92015-1193 | 1 |
| WASHER,8.2X14X1.0 (Ref # 92022) | 92022-1488 | 1 |
| COLLAR,6.5X10.5X4.5 (Ref # 92027) | 92027-1885 | 1 |
| BEARING-BALL,6901 (Ref # 92045) | 92045-1246 | 1 |
| BEARING-NEEDLE,HK1210 (Ref # 92046) | 92046-1010 | 1 |
| BEARING-NEEDLE,HK1312 (Ref # 92046A) | 92046-1148 | 1 |
| BEARING-NEEDLE (Ref # 92046B) | 92046-1230 | 1 |

2004 KLX300R PARTS LIST

Engine Cover(s)

| ITEM NAME | PART NUMBER | QUANTITY |
|----------------------------------|-------------|----------|
| SEAL-OIL (Ref # 92049) | 92049-1191 | 1 |
| SEAL-OIL,AC037AE0 (Ref # 92049A) | 92049-1228 | 1 |
| SEAL-OIL (Ref # 92049B) | 92049-1262 | 1 |
| SEAL-OIL (Ref # 92050) | 92050-078 | 1 |
| SEAL-OIL,TB13225.5 (Ref # 92051) | 92051-005 | 1 |
| RING-O (Ref # 92055) | 92055-012 | 1 |
| RING-O (Ref # 92055A) | 92055-091 | 1 |
| RING-O (Ref # 92055B) | 92055-1146 | 1 |
| PLUG (Ref # 92066) | 92066-1397 | 1 |
| PLUG,30X8 (Ref # 92067) | 92067-024 | 1 |
| BOLT,6X35 (Ref # 92150) | 92150-1137 | 1 |
| BOLT-FLANGED-SMALL (Ref # 132C) | 132Y0625 | 12 |
| BOLT-FLANGED-SMALL (Ref # 132D) | 132Y0630 | 2 |
| BOLT-FLANGED-SMALL (Ref # 132E) | 132Y0640 | 8 |
| BOLT-FLANGED-SMALL (Ref # 132F) | 132Y0670 | 2 |
| BOLT-FLANGED-SMALL (Ref # 132G) | 132Y0810 | 1 |
| SCREW-PAN-CROS (Ref # 220) | 220X0616 | 1 |
| ROLLER,4X8 (Ref # 610) | 610A0408 | 4 |