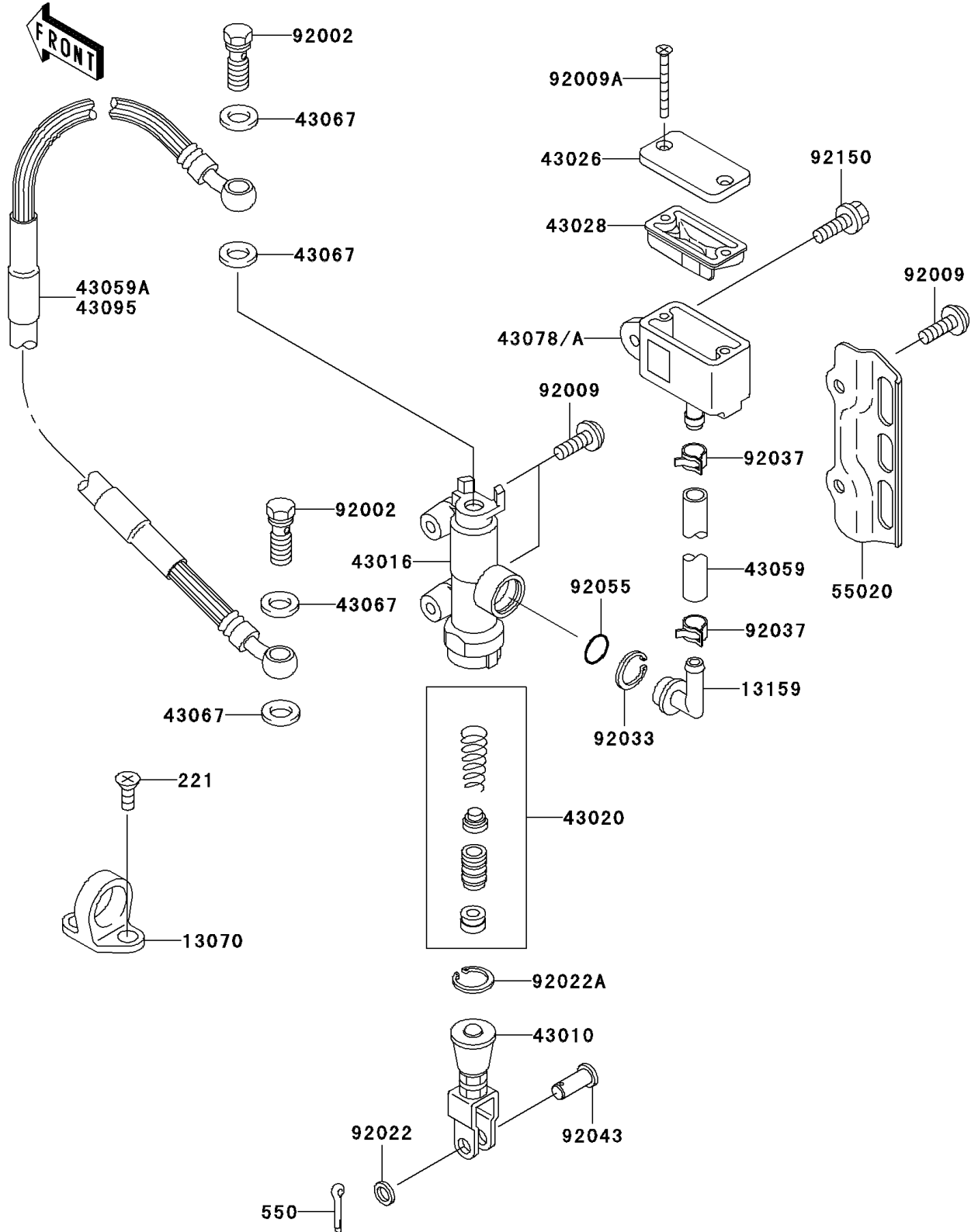


# 2003 KLX300R PARTS DIAGRAM

## Rear Master Cylinder

F2293



## 2003 KLX300R PARTS LIST

### Rear Master Cylinder

| ITEM NAME                                   | PART NUMBER | QUANTITY |
|---|-------------|----------|
| SCREW-CSK-CROS,6X10 (Ref # 221)             | 221B0610    | 4        |
| PIN-COTTER,2.0X15 (Ref # 550)               | 550D2015    | 1        |
| GUIDE,HOSE (Ref # 13070)                    | 13070-1144  | 2        |
| CONNECTOR (Ref # 13159)                     | 13159-1056  | 1        |
| ROD-ASSY-BRAKE (Ref # 43010)                | 43010-1068  | 1        |
| CYLINDER-MASTER (Ref # 43016)               | 43016-1149  | 1        |
| PISTON-COMP-BRAKE (Ref # 43020)             | 43020-1094  | 1        |
| CAP-BRAKE (Ref # 43026)                     | 43026-1075  | 1        |
| DIAPHRAGM (Ref # 43028)                     | 43028-1067  | 1        |
| HOSE-BRAKE,RR MASTER CYLINDER (Ref # 43059) | 43059-1767  | 1        |
| WASHER,10.5X15X1.5 (Ref # 43067)            | 43067-001   | 4        |
| RESERVOIR (Ref # 43078A)                    | 43078-1189  | 1        |
| HOSE-BRAKE,RR (Ref # 43095)                 | 43095-1349  | 1        |
| GUARD,RR BRAKE RESERVOIR HOSE (Ref # 55020) | 55020-1489  | 1        |
| BOLT,OIL,L=23 (Ref # 92002)                 | 92002-1888  | 2        |
| SCREW,6X14,WHITE (Ref # 92009)              | 92009-1287  | 4        |
| SCREW,4X40 (Ref # 92009A)                   | 92009-1596  | 2        |
| WASHER,8.5X13X1 (Ref # 92022)               | 92022-1028  | 1        |
| WASHER,CIRCRIP (Ref # 92022A)               | 92022-1601  | 1        |
| RING-SNAP,20.5MM (Ref # 92033)              | 92033-1186  | 1        |
| CLAMP (Ref # 92037)                         | 92037-1710  | 2        |
| PIN (Ref # 92043)                           | 92043-0004  | 1        |
| RING-O,MASTER CYLINDER (Ref # 92055)        | 92055-1251  | 1        |
| BOLT,6X20 (Ref # 92150)                     | 92150-1339  | 1        |