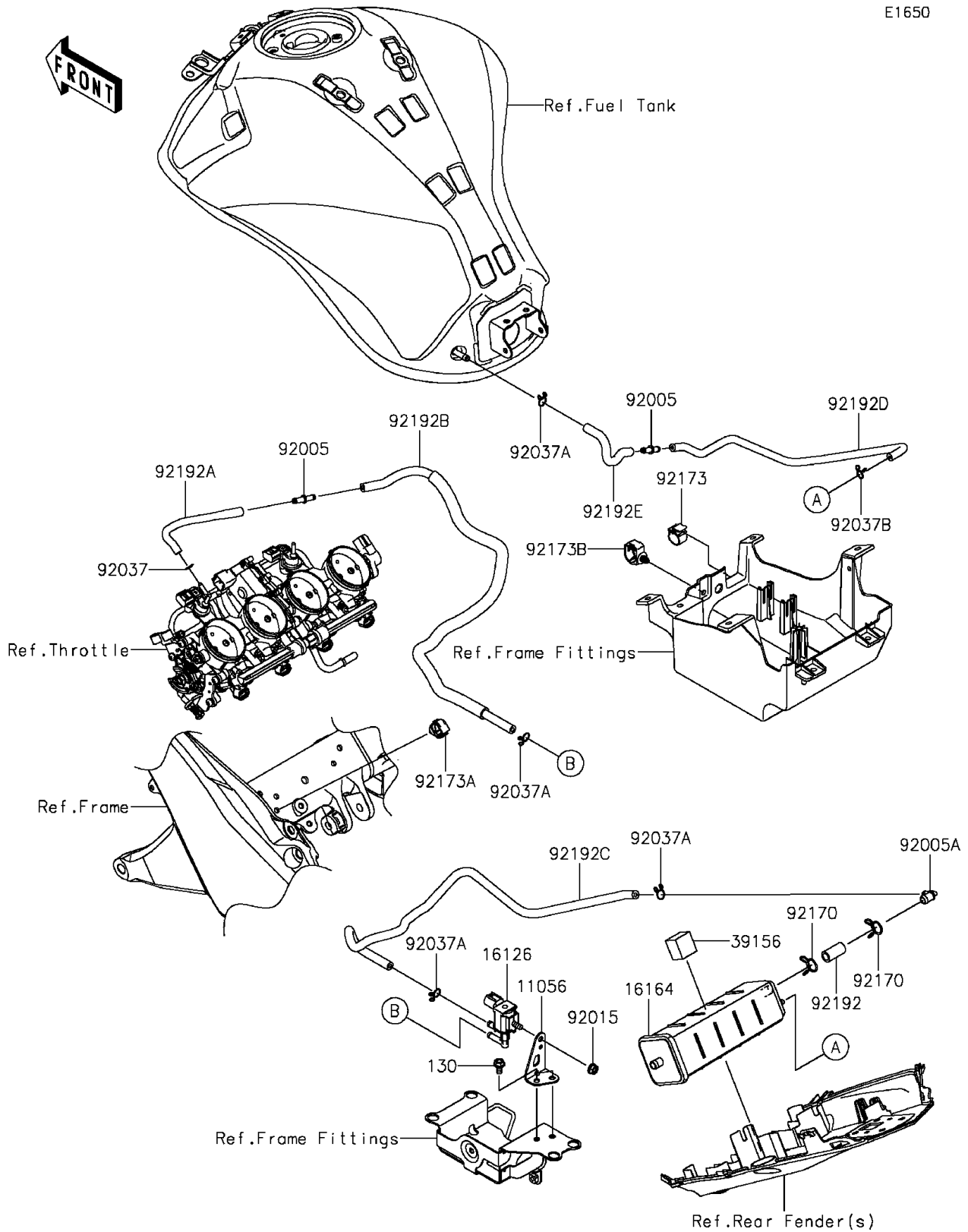


# 2015 Z1000 ABS PARTS DIAGRAM

Fuel Evaporative System(CA)

E1650



## 2015 Z1000 ABS PARTS LIST

Fuel Evaporative System(CA)

| ITEM NAME                                   | PART NUMBER | QUANTITY |
|---|-------------|----------|
| BRACKET,VALVE (Ref # 11056)                 | 11056-2480  | 1        |
| BOLT-FLANGED,6X12 (Ref # 130)               | 130BA0612   | 2        |
| VALVE,SOLENOID (Ref # 16126)                | 16126-0705  | 1        |
| CANISTER (Ref # 16164)                      | 16164-0009  | 1        |
| PAD,CANISTER (Ref # 39156)                  | 39156-1774  | 1        |
| FITTING (Ref # 92005)                       | 92005-0721  | 2        |
| FITTING (Ref # 92005A)                      | 92005-0753  | 1        |
| NUT,FLANGED,6MM (Ref # 92015)               | 92015-1367  | 1        |
| CLAMP,TUBE (Ref # 92037)                    | 92037-010   | 1        |
| CLAMP,TUBE (Ref # 92037A)                   | 92037-147   | 4        |
| CLAMP (Ref # 92037B)                        | 92037-1712  | 1        |
| CLAMP (Ref # 92170)                         | 92170-1695  | 2        |
| CLAMP,CLIP (Ref # 92173)                    | 92173-0127  | 1        |
| CLAMP,12MM DIA. (Ref # 92173A)              | 92173-0736  | 1        |
| CLAMP (Ref # 92173B)                        | 92173-0861  | 1        |
| TUBE,9X14.4X30 (Ref # 92192)                | 92192-1148  | 1        |
| TUBE,THROTTLE-FITTING(VALVE) (Ref # 92192A) | 92192-1279  | 1        |
| TUBE,FITTING(THROTTLE)-VALVE (Ref # 92192B) | 92192-1288  | 1        |
| TUBE,VALVE-CANISTER (Ref # 92192C)          | 92192-1289  | 1        |
| TUBE,CANISTER-FITTING(TANK) (Ref # 92192D)  | 92192-1378  | 1        |
| TUBE,FITTING(CANISTER)-TANK (Ref # 92192E)  | 92192-1379  | 1        |