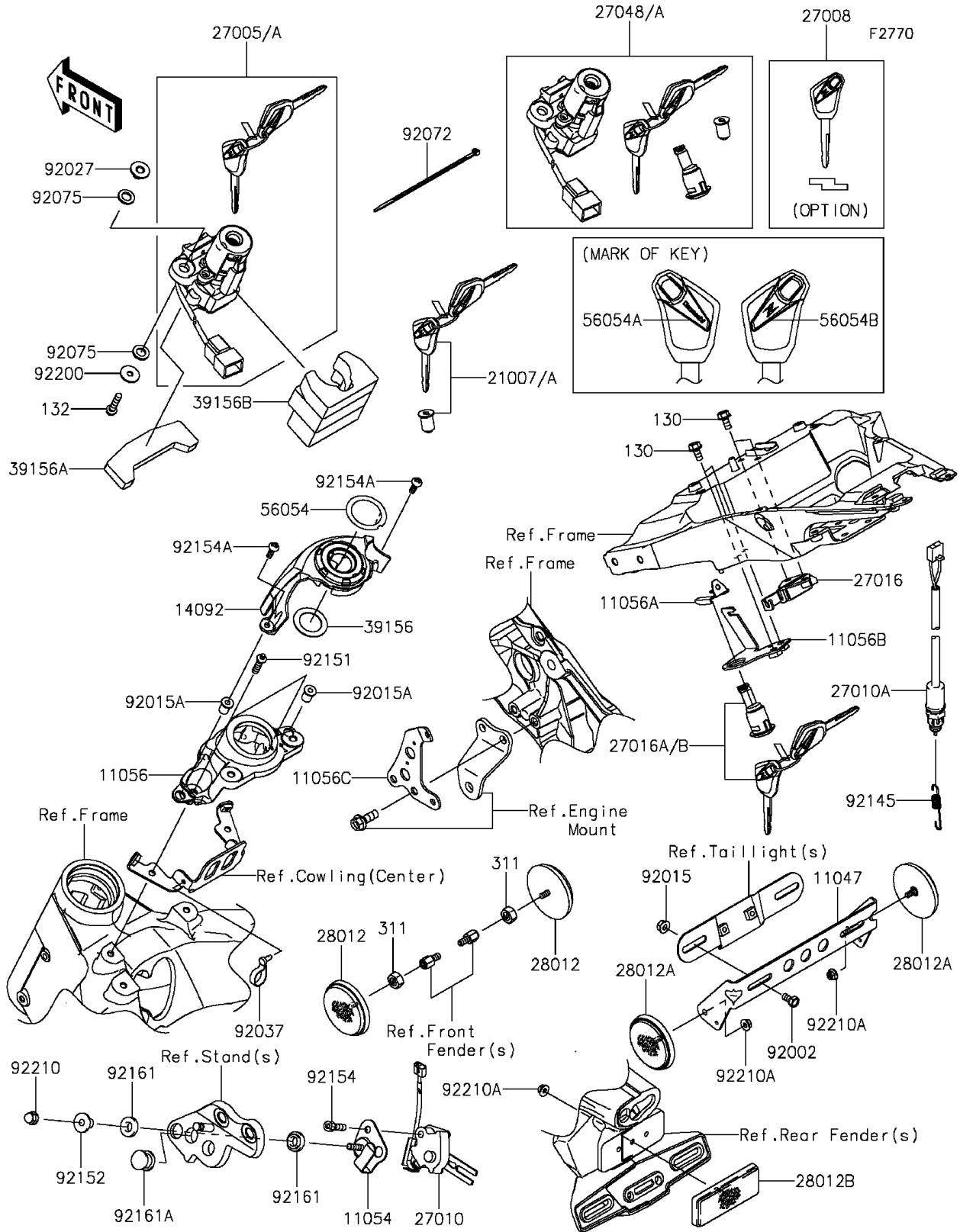


# 2014 Z1000 ABS PARTS DIAGRAM

Ignition Switch/Locks/Reflectors



## 2014 Z1000 ABS PARTS LIST

### Ignition Switch/Locks/Reflectors

ITEM NAME	PART NUMBER	QUANTITY
BRACKET,REFLECTOR (Ref # 11047)	11047-1470	1
BRACKET,SIDE STAND SWITCH (Ref # 11054)	11054-1904	1
BRACKET,IGNITION SWITCH (Ref # 11056)	11056-0161	1
BRACKET (Ref # 11056A)	11056-1084	1
BRACKET,KEY CYLINDER (Ref # 11056B)	11056-2507	1
BRACKET,IMMOBI AMP (Ref # 11056C)	11056-2807	1
COVER,KEY CYLINDER (Ref # 14092)	14092-1130	1
ROTOR,LOCK,TANK CAP (Ref # 21007)	21007-5073	1
SWITCH-ASSY-IGNITION (Ref # 27005)	27005-0594	1
KEY-LOCK,BLANK (Ref # 27008)	27008-0569	1
SWITCH,SIDE STAND (Ref # 27010)	27010-0112	1
SWITCH,STOP (Ref # 27010A)	27010-0749	1
LOCK-ASSY,SEAT STRIKER (Ref # 27016)	27016-1115	1
LOCK-ASSY,SEAT (Ref # 27016A)	27016-5382	1
SWITCH-ASSY (Ref # 27048)	27048-5032	1
REFLECTOR-REFLEX,FR,SIDE (Ref # 28012)	28012-0001	2
REFLECTOR-REFLEX (Ref # 28012A)	28012-0002	2
REFLECTOR-REFLEX (Ref # 28012B)	28012-1077	1
PAD (Ref # 39156)	39156-0617	1
PAD,FRAME (Ref # 39156A)	39156-1754	1
PAD,IG. SWITCH (Ref # 39156B)	39156-1755	1
MARK,IGNITION (Ref # 56054)	56054-1108	1
MARK,KAWASAKI (Ref # 56054A)	56054-1572	AR
MARK,Z (Ref # 56054B)	56054-1573	AR
BOLT,6X12 (Ref # 92002)	92002-1132	2
NUT,FLANGED,6MM (Ref # 92015)	92015-1367	2
NUT,WELL,5MM (Ref # 92015A)	92015-1757	2
COLLAR,L=9.6 (Ref # 92027)	92027-1045	2
CLAMP,SPEED,L=80.5 (Ref # 92037)	92037-1903	1

## 2014 Z1000 ABS PARTS LIST

### Ignition Switch/Locks/Reflectors

ITEM NAME	PART NUMBER	QUANTITY
BAND,L=148 (Ref # 92072)	92072-3768	1
DAMPER (Ref # 92075)	92075-1564	4
SPRING,BRAKE LAMP SWITCH (Ref # 92145)	92145-0761	1
BOLT,TORX,6X22 (Ref # 92151)	92151-1946	2
COLLAR (Ref # 92152)	92152-1074	1
BOLT-FLANGED,6X12 (Ref # 130)	130BA0612	4
BOLT-FLANGED-SMALL,6X25 (Ref # 132)	132BA0625	2
NUT-HEX,5MM (Ref # 311)	311AB0500	2
BOLT,SOCKET,6X22 (Ref # 92154)	92154-0031	1
BOLT,SOCKET,5X16 (Ref # 92154A)	92154-0209	2
DAMPER (Ref # 92161)	92161-0117	2
DAMPER (Ref # 92161A)	92161-0118	1
WASHER,6X20X1.6 (Ref # 92200)	92200-0212	2
NUT,CAP,6MM (Ref # 92210)	92210-0003	1
NUT,FLANGED,5MM (Ref # 92210A)	92210-0007	3