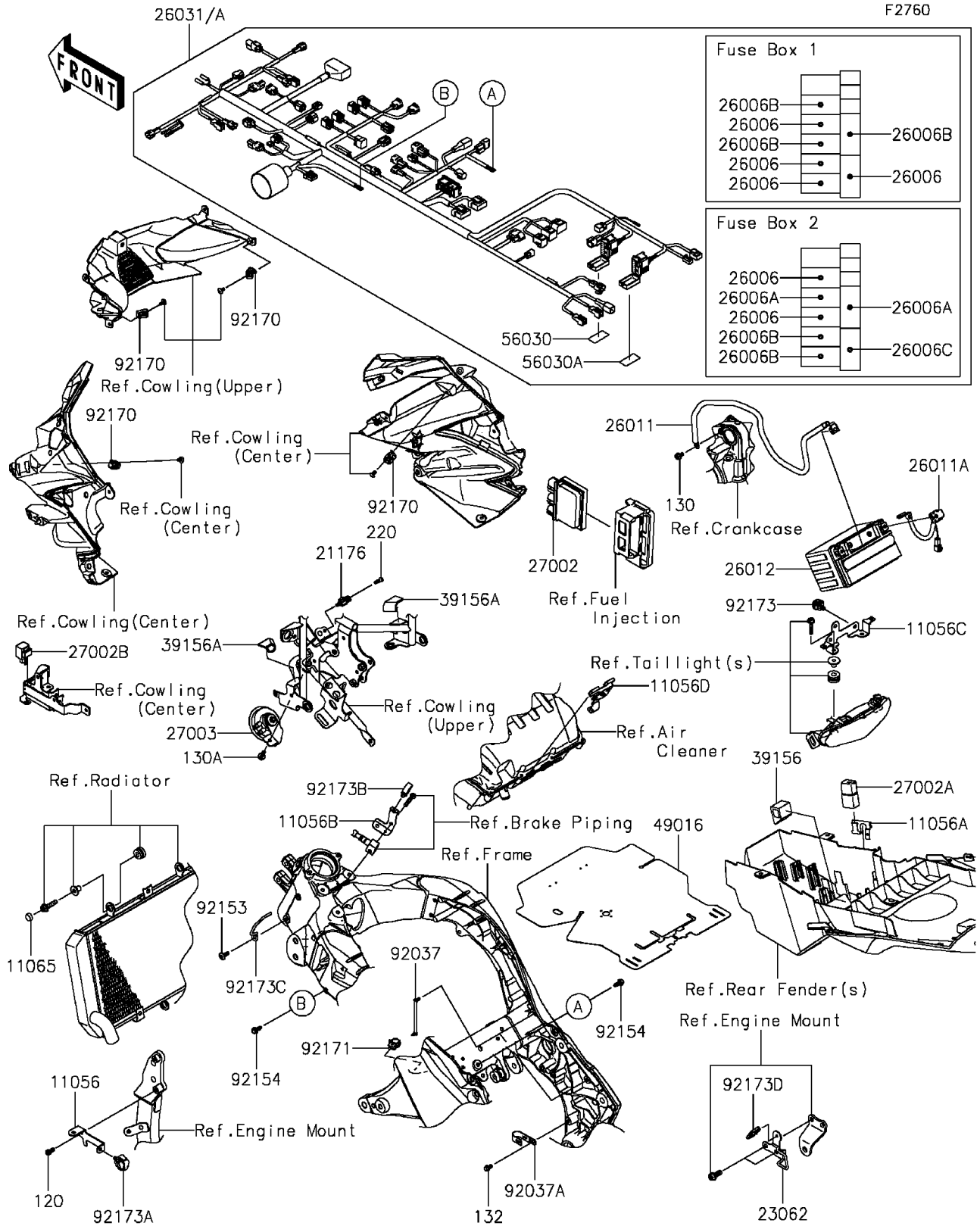


# 2015 VERSYS® 1000 ABS PARTS DIAGRAM

## Chassis Electrical Equipment



## 2015 VERSYS® 1000 ABS PARTS LIST

### Chassis Electrical Equipment

ITEM NAME	PART NUMBER	QUANTITY
BRACKET,ENGINE (Ref # 11056)	11056-1478	1
BRACKET,RELAY (Ref # 11056A)	11056-1735	1
BRACKET,WHEEL SPEED SENSOR (Ref # 11056B)	11056-4165	1
BRACKET,TAIL LAMP (Ref # 11056C)	11056-4166	1
BRACKET,AIR BOX (Ref # 11056D)	11056-4375	1
CAP,BOLT (Ref # 11065)	11065-0752	1
BOLT-SOCKET,6X12 (Ref # 120)	120CA0612	1
SENSOR,AIR TEMPERATURE (Ref # 21176)	21176-0048	1
BRACKET-COMP,CABLE GUIDE (Ref # 23062)	23062-0811	1
FUSE,MINI BLADE,15A,BLUE (Ref # 26006)	26006-0001	6
FUSE,MINI BLADE,25A,NATURAL (Ref # 26006A)	26006-0020	2
FUSE,MINI BLADE,7.5A,BROWN (Ref # 26006B)	26006-0055	5
FUSE,MINI BLADE,30A,GREEN (Ref # 26006C)	26006-1080	1
WIRE-LEAD,BATTERY(-) (Ref # 26011)	26011-0737	1
WIRE-LEAD,BATTERY(+) (Ref # 26011A)	26011-0758	1
BATTERY,YTX9-BS,12V 8AH (Ref # 26012)	26012-0088	1
HARNESS,MAIN (Ref # 26031)	26031-1749	1
HARNESS,MAIN (Ref # 26031A)	26031-1750	1
RELAY-ASSY (Ref # 27002)	27002-0007	1
RELAY-ASSY (Ref # 27002A)	27002-1086	1
RELAY-ASSY,SIGNAL LAMP (Ref # 27002B)	27002-1097	1
HORN (Ref # 27003)	27003-0109	1
PAD (Ref # 39156)	39156-0812	1
PAD,21X33X3 (Ref # 39156A)	39156-1851	2
COVER-SEAL (Ref # 49016)	49016-0625	1
LABEL,FUSE BOX1 (Ref # 56030)	56030-0830	1
LABEL,FUSE BOX2 (Ref # 56030A)	56030-0878	1
CLAMP,SPEED,L=80.5 (Ref # 92037)	92037-1903	2
CLAMP,CABLE,STEEL SHEET (Ref # 92037A)	92037-2014	1

## 2015 VERSYS® 1000 ABS PARTS LIST

### Chassis Electrical Equipment

ITEM NAME	PART NUMBER	QUANTITY
BOLT,SOCKET,6X16 (Ref # 92153)	92153-1526	1
BOLT,FLANGED,6X16 (Ref # 92154)	92154-0551	2
CLAMP (Ref # 92170)	92170-1514	4
CLAMP,EDGE CLIP (Ref # 92171)	92171-1722	1
CLAMP,12MM DIA. (Ref # 92173)	92173-0736	1
CLAMP (Ref # 92173A)	92173-0861	1
CLAMP,HOLDER CLIP (Ref # 92173B)	92173-0868	1
CLAMP,IRON WIRE (Ref # 92173C)	92173-1199	1
CLAMP,CABLE CLIP (Ref # 92173D)	92173-1242	1
BOLT-FLANGED,6X10 (Ref # 130)	130BA0610	1
BOLT-FLANGED,6X14 (Ref # 130A)	130BA0614	1
BOLT-FLANGED-SMALL,6X10 (Ref # 132)	132BA0610	1
SCREW-PAN-CROS,5X16 (Ref # 220)	220AB0516	1