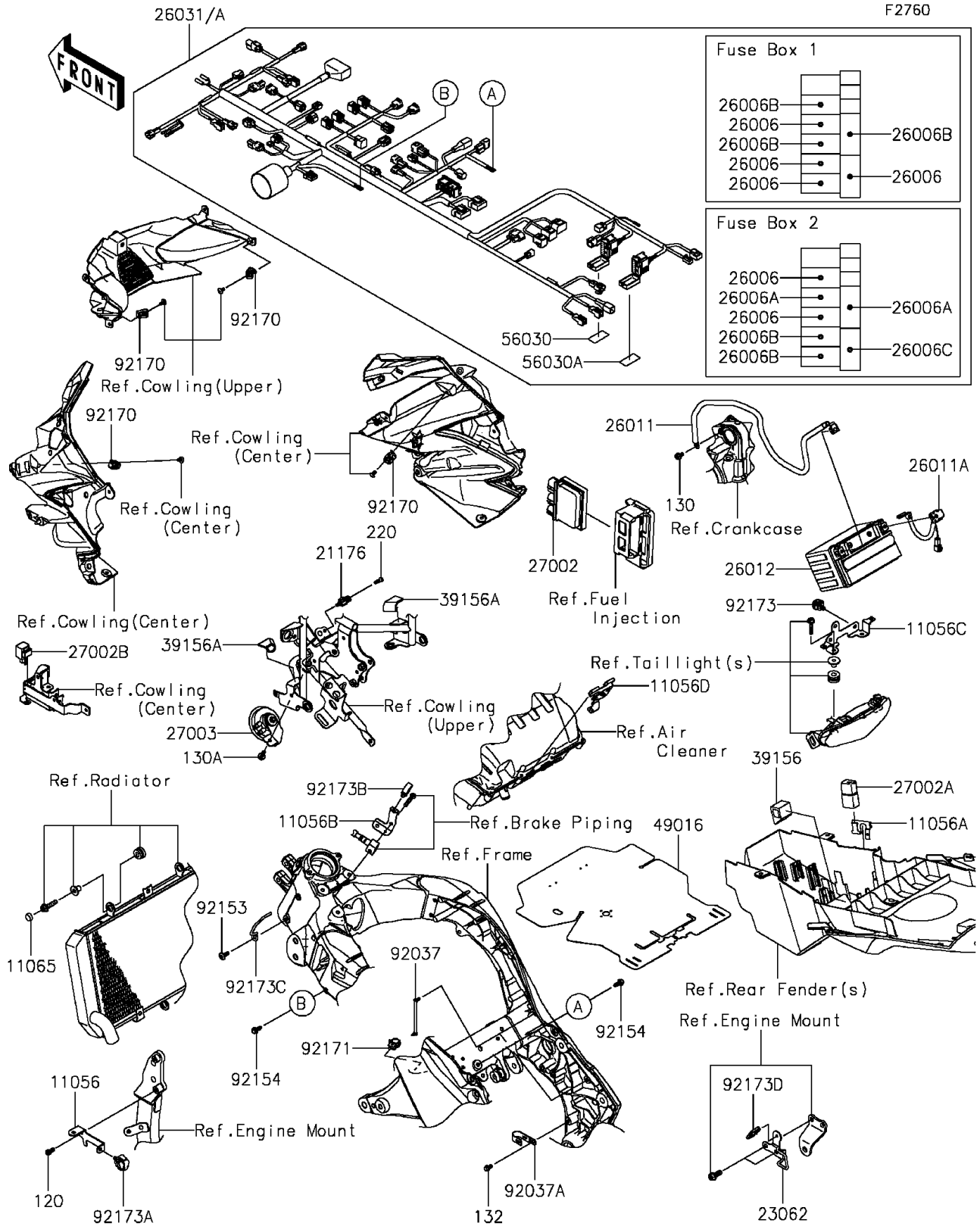


2016 VERSYS® 1000 LT PARTS DIAGRAM

Chassis Electrical Equipment



2016 VERSYS® 1000 LT PARTS LIST

Chassis Electrical Equipment

| ITEM NAME | PART NUMBER | QUANTITY |
|--|-------------|----------|
| BRACKET,ENGINE (Ref # 11056) | 11056-1478 | 1 |
| BRACKET,RELAY (Ref # 11056A) | 11056-1735 | 1 |
| BRACKET,WHEEL SPEED SENSOR (Ref # 11056B) | 11056-4165 | 1 |
| BRACKET,TAIL LAMP (Ref # 11056C) | 11056-4166 | 1 |
| BRACKET,AIR BOX (Ref # 11056D) | 11056-4375 | 1 |
| CAP,BOLT (Ref # 11065) | 11065-0752 | 1 |
| BOLT-SOCKET,6X12 (Ref # 120) | 120CA0612 | 1 |
| SENSOR,AIR TEMPERATURE (Ref # 21176) | 21176-0048 | 1 |
| BRACKET-COMP,CABLE GUIDE (Ref # 23062) | 23062-0811 | 1 |
| FUSE,MINI BLADE,15A,BLUE (Ref # 26006) | 26006-0001 | 6 |
| FUSE,MINI BLADE,25A,NATURAL (Ref # 26006A) | 26006-0020 | 2 |
| FUSE,MINI BLADE,7.5A,BROWN (Ref # 26006B) | 26006-0055 | 5 |
| FUSE,MINI BLADE,30A,GREEN (Ref # 26006C) | 26006-1080 | 1 |
| WIRE-LEAD,BATTERY(-) (Ref # 26011) | 26011-0737 | 1 |
| WIRE-LEAD,BATTERY(+) (Ref # 26011A) | 26011-0758 | 1 |
| BATTERY,YTX9-BS,12V 8AH (Ref # 26012) | 26012-0088 | 1 |
| HARNESS,MAIN (Ref # 26031) | 26031-1749 | 1 |
| HARNESS,MAIN (Ref # 26031A) | 26031-1750 | 1 |
| RELAY-ASSY (Ref # 27002) | 27002-0007 | 1 |
| RELAY-ASSY (Ref # 27002A) | 27002-1086 | 1 |
| RELAY-ASSY,SIGNAL LAMP (Ref # 27002B) | 27002-1097 | 1 |
| HORN (Ref # 27003) | 27003-0109 | 1 |
| PAD (Ref # 39156) | 39156-0812 | 1 |
| PAD,21X33X3 (Ref # 39156A) | 39156-1851 | 2 |
| COVER-SEAL (Ref # 49016) | 49016-0625 | 1 |
| LABEL,FUSE BOX1 (Ref # 56030) | 56030-0830 | 1 |
| LABEL,FUSE BOX2 (Ref # 56030A) | 56030-0878 | 1 |
| CLAMP,SPEED,L=80.5 (Ref # 92037) | 92037-1903 | 2 |
| CLAMP,CABLE,STEEL SHEET (Ref # 92037A) | 92037-2014 | 1 |

2016 VERSYS® 1000 LT PARTS LIST

Chassis Electrical Equipment

| ITEM NAME | PART NUMBER | QUANTITY |
|-------------------------------------|-------------|----------|
| BOLT,SOCKET,6X16 (Ref # 92153) | 92153-1526 | 1 |
| BOLT,FLANGED,6X16 (Ref # 92154) | 92154-0551 | 2 |
| CLAMP (Ref # 92170) | 92170-1514 | 4 |
| CLAMP,EDGE CLIP (Ref # 92171) | 92171-1722 | 1 |
| CLAMP,12MM DIA. (Ref # 92173) | 92173-0736 | 1 |
| CLAMP (Ref # 92173A) | 92173-0861 | 1 |
| CLAMP,HOLDER CLIP (Ref # 92173B) | 92173-0868 | 1 |
| CLAMP,IRON WIRE (Ref # 92173C) | 92173-1199 | 1 |
| CLAMP,CABLE CLIP (Ref # 92173D) | 92173-1242 | 1 |
| BOLT-FLANGED,6X10 (Ref # 130) | 130BA0610 | 1 |
| BOLT-FLANGED,6X14 (Ref # 130A) | 130BA0614 | 1 |
| BOLT-FLANGED-SMALL,6X10 (Ref # 132) | 132BA0610 | 1 |
| SCREW-PAN-CROS,5X16 (Ref # 220) | 220AB0516 | 1 |