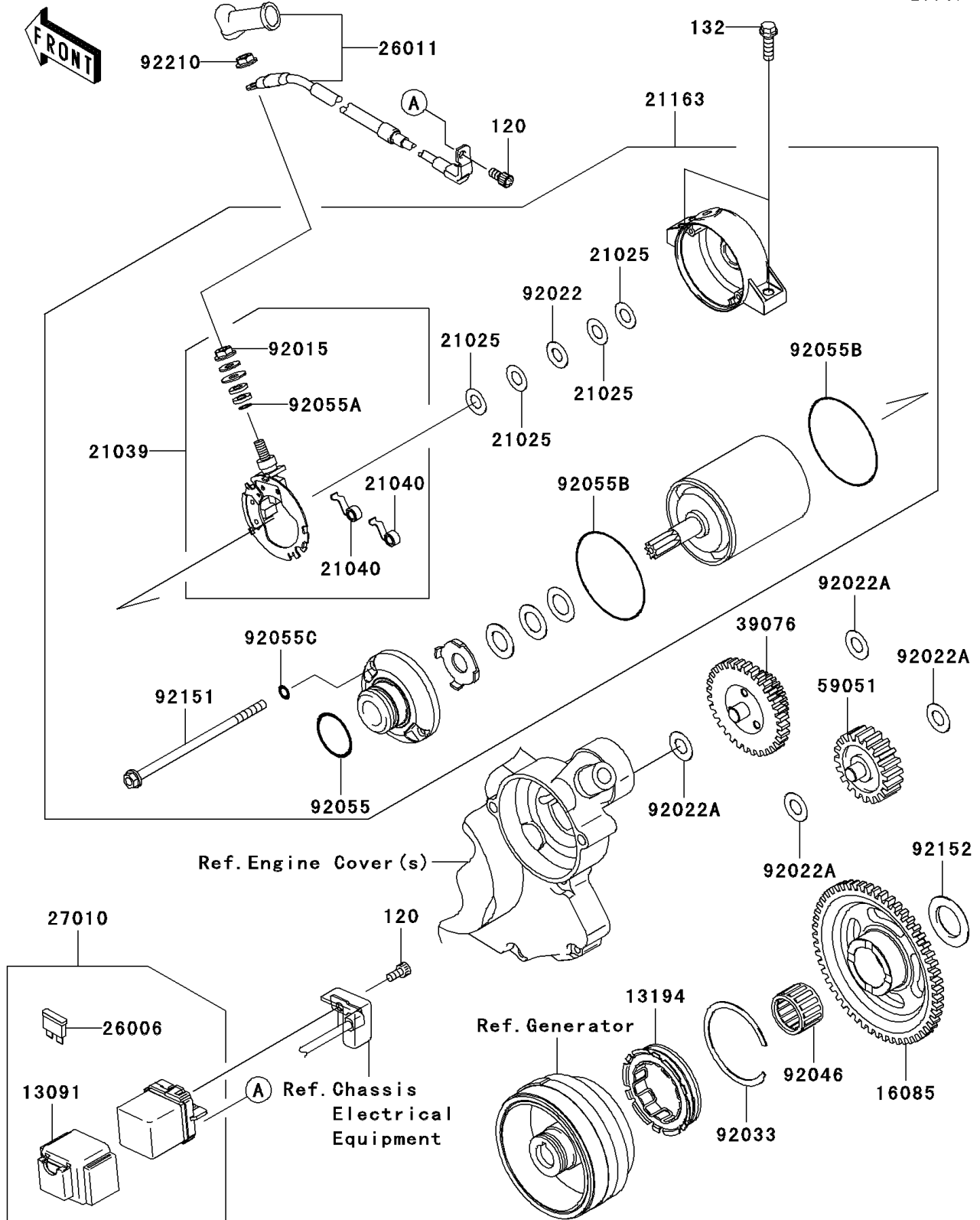


# 2012 KLX450R (Australian) PARTS DIAGRAM

## Starter Motor

E1840



## 2012 KLX450R (Australian) PARTS LIST

### Starter Motor

ITEM NAME	PART NUMBER	QUANTITY
BOLT-SOCKET,5X10 (Ref # 120)	120CB0510	2
BOLT-FLANGED-SMALL,6X20 (Ref # 132)	132BC0620	2
HOLDER (Ref # 13091)	13091-1992	1
CLUTCH-ONEWAY (Ref # 13194)	13194-0008	1
GEAR (Ref # 16085)	16085-0122	1
WASHER,9.1X18X0.2 (Ref # 21025)	21025-011	AR
BRUSH (Ref # 21039)	21039-0006	1
SPRING-BRUSH (Ref # 21040)	21040-1057	2
STARTER-ELECTRIC (Ref # 21163)	21163-0038	1
FUSE,BLADE,20A,YELLOW (Ref # 26006)	26006-1051	1
WIRE-LEAD (Ref # 26011)	26011-0133	1
SWITCH (Ref # 27010)	27010-0004	1
LIMITER (Ref # 39076)	39076-0012	1
GEAR-SPUR,IDLER (Ref # 59051)	59051-0074	1
NUT,STARTER MOTOR (Ref # 92015)	92015-1476	1
WASHER,9.1X18X0.8 (Ref # 92022)	92022-1132	1
WASHER,10.2X20X0.5 (Ref # 92022A)	92022-1649	4
RING-SNAP (Ref # 92033)	92033-3731	1
BEARING-NEEDLE,K22X28X17V1 (Ref # 92046)	92046-0026	1
RING-O (Ref # 92055)	92055-1276	1
RING-O,4.5X2.0 (Ref # 92055A)	92055-1370	1
RING-O (Ref # 92055B)	92055-1550	2
RING-O (Ref # 92055C)	92055-1551	2
BOLT (Ref # 92151)	92151-1158	2
COLLAR,22X27.5X4.1 (Ref # 92152)	92152-0515	1
NUT,6MM (Ref # 92210)	92210-0188	1