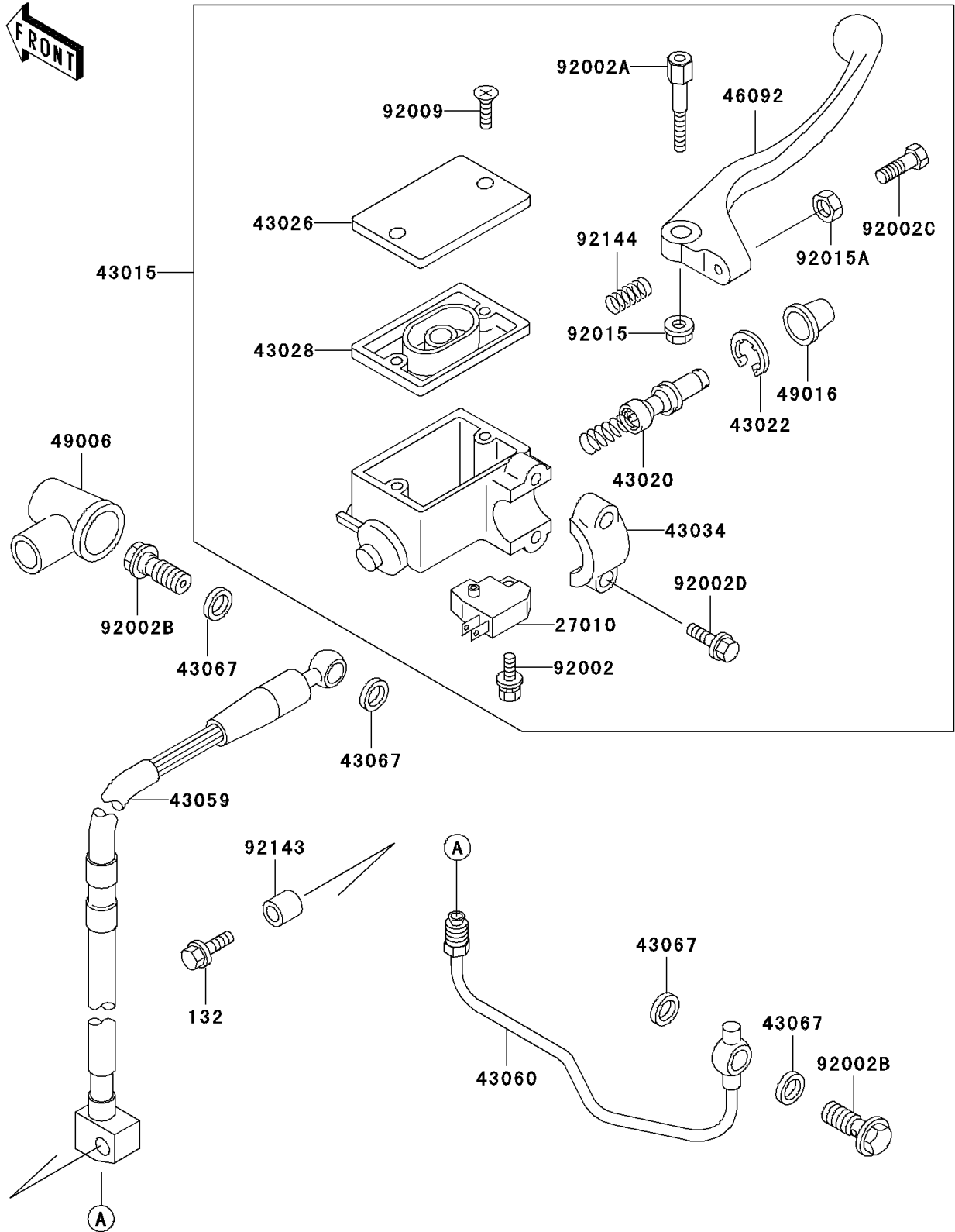


# 1995 KLX650 PARTS DIAGRAM

## Front Master Cylinder

F2291



# 1995 KLX650 PARTS LIST

## Front Master Cylinder

| ITEM NAME                                  | PART NUMBER | QUANTITY |
|--|-------------|----------|
| BOLT-FLANGED-SMALL (Ref # 132)             | 132G0630    | 1        |
| SWITCH,BRAKE (Ref # 27010)                 | 27010-1170  | 1        |
| CYLINDER-ASSY-MASTER,FR (Ref # 43015)      | 43015-1534  | 1        |
| PISTON-COMP-BRAKE (Ref # 43020)            | 43020-1104  | 1        |
| STOPPER-BRAKE,PISTON (Ref # 43022)         | 43022-1010  | 1        |
| CAP-BRAKE (Ref # 43026)                    | 43026-1074  | 1        |
| DIAPHRAGM (Ref # 43028)                    | 43028-1061  | 1        |
| HOLDER-BRAKE,MASTER CYLINDER (Ref # 43034) | 43034-1016  | 1        |
| HOSE-BRAKE,FR (Ref # 43059)                | 43059-1737  | 1        |
| PIPE-BRAKE,FR (Ref # 43060)                | 43060-1093  | 1        |
| WASHER,10.5X15X1.5 (Ref # 43067)           | 43067-001   | 4        |
| LEVER-GRIP,FRONT BRAKE (Ref # 46092)       | 46092-1175  | 1        |
| BOOT,DUST (Ref # 49006)                    | 49006-1040  | 1        |
| COVER-SEAL,MASTER CYLINDER (Ref # 49016)   | 49016-1044  | 1        |
| BOLT,SCREW,4X12 (Ref # 92002)              | 92002-1323  | 1        |
| BOLT,LEVER SET (Ref # 92002A)              | 92002-1879  | 1        |
| BOLT,OIL,L=23 (Ref # 92002B)               | 92002-1888  | 2        |
| BOLT,ADJUST (Ref # 92002C)                 | 92002-1893  | 1        |
| BOLT (Ref # 92002D)                        | 92002-1894  | 2        |
| SCREW,4MM (Ref # 92009)                    | 92009-1458  | 2        |
| NUT,FLANGED,6MM,BLACK (Ref # 92015)        | 92015-1233  | 1        |
| NUT,ADJUST (Ref # 92015A)                  | 92015-1642  | 1        |
| COLLAR,6.5X9.5X17 (Ref # 92143)            | 92143-1408  | 1        |
| SPRING,RETURN (Ref # 92144)                | 92144-1103  | 1        |