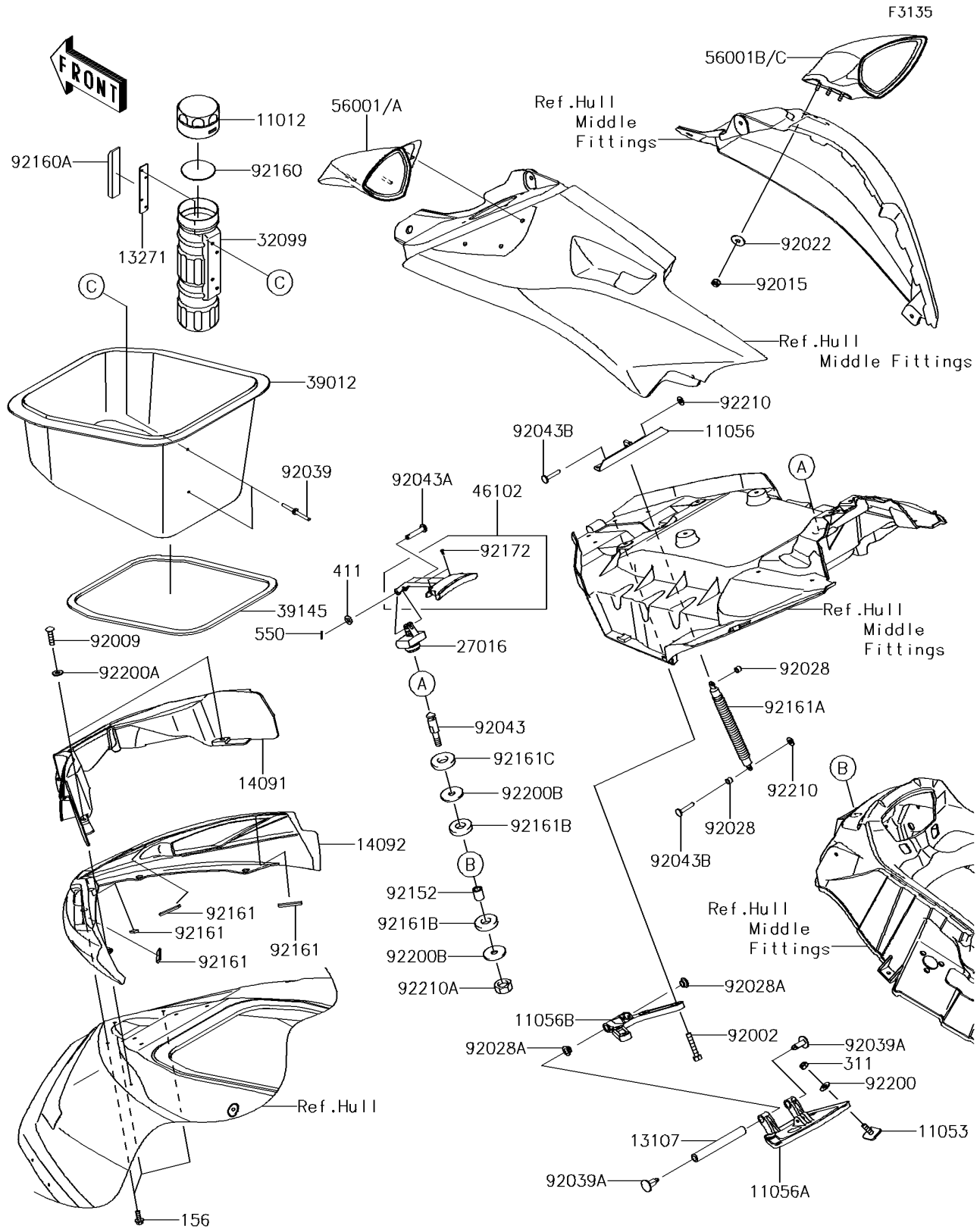


2018 JET SKI® ULTRA® 310R PARTS DIAGRAM

Hull Front Fittings



2018 JET SKI® ULTRA® 310R PARTS LIST

Hull Front Fittings

| ITEM NAME | PART NUMBER | QUANTITY |
|---|----------------|----------|
| CAP,FIRE EXTINGUISHER (Ref # 11012) | 11012-3766 | 1 |
| BRACKET (Ref # 11053) | 11053-3776 | 4 |
| BRACKET (Ref # 11056) | 11056-3703 | 1 |
| BRACKET (Ref # 11056A) | 11056-3725 | 1 |
| BRACKET (Ref # 11056B) | 11056-3726 | 1 |
| SHAFT,FRONT HINGE (Ref # 13107) | 13107-3802 | 1 |
| PLATE,FIRE EXTINGUISHER (Ref # 13271) | 13271-3775 | 1 |
| COVER,FR,INSIDE (Ref # 14091) | 14091-3828 | 1 |
| COVER,FR,TOP,EBONY (Ref # 14092) | 14092-0775-H8 | 1 |
| LOCK-ASSY,HATCH (Ref # 27016) | 27016-3761 | 1 |
| CASE,FIRE EXTINGUISHER (Ref # 32099) | 32099-3769 | 1 |
| CASE-STORAGE (Ref # 39012) | 39012-0034 | 1 |
| TRIM-SEAL,L=1627 (Ref # 39145) | 39145-3807 | 1 |
| ROD,HATCH LOCK (Ref # 46102) | 46102-3734 | 1 |
| MIRROR-ASSY,LH,M.S.WHITE (Ref # 56001) | 56001-0265-31Y | 1 |
| MIRROR-ASSY,RH,M.S.WHITE (Ref # 56001B) | 56001-0266-31Y | 1 |
| BOLT,6X30 (Ref # 92002) | 92002-3726 | 4 |
| SCREW,TAPPING,6X20 (Ref # 92009) | 92009-3842 | 2 |
| NUT,LOCK,6MM (Ref # 92015) | 92015-3766 | 6 |
| WASHER,6.5X20X1.5 (Ref # 92022) | 92022-3710 | 6 |
| BUSHING (Ref # 92028) | 92028-3765 | 2 |
| BUSHING (Ref # 92028A) | 92028-3770 | 2 |
| RIVET (Ref # 92039) | 92039-3783 | 2 |
| RIVET (Ref # 92039A) | 92039-3788 | 2 |
| PIN (Ref # 92043) | 92043-0754 | 1 |
| PIN,6X33 (Ref # 92043A) | 92043-0795 | 1 |
| PIN,6X33 (Ref # 92043B) | 92043-3748 | 2 |
| COLLAR,8.2X14X16.2 (Ref # 92152) | 92152-0979 | 1 |
| DAMPER (Ref # 92160) | 92160-3814 | 1 |

2018 JET SKI® ULTRA® 310R PARTS LIST

Hull Front Fittings

| ITEM NAME | PART NUMBER | QUANTITY |
|------------------------------------|-------------|----------|
| DAMPER (Ref # 92160A) | 92160-3821 | 1 |
| DAMPER,10X50X4 (Ref # 92161) | 92161-1373 | 4 |
| DAMPER,HATCH (Ref # 92161A) | 92161-1580 | 1 |
| DAMPER (Ref # 92161B) | 92161-3739 | 2 |
| DAMPER (Ref # 92161C) | 92161-3747 | 1 |
| SCREW,3X8 (Ref # 92172) | 92172-3716 | 2 |
| WASHER,6.5X16X1.0 (Ref # 92200) | 92200-3712 | 4 |
| WASHER,6.5X14.5X1.5 (Ref # 92200A) | 92200-3775 | 2 |
| WASHER,8.5X32X2 (Ref # 92200B) | 92200-3786 | 2 |
| BOLT-WP,5X16 (Ref # 156) | 156R0516 | 3 |
| NUT-HEX,6MM (Ref # 311) | 311R0600 | 4 |
| WASHER-PLAIN,6MM (Ref # 411) | 411S0600 | 1 |
| PIN-COTTER,1.6X15 (Ref # 550) | 550S1615 | 1 |
| NUT,SPEED,6MM (Ref # 92210) | 92210-3739 | 2 |
| NUT,LOCK,8MM (Ref # 92210A) | 92210-3742 | 1 |