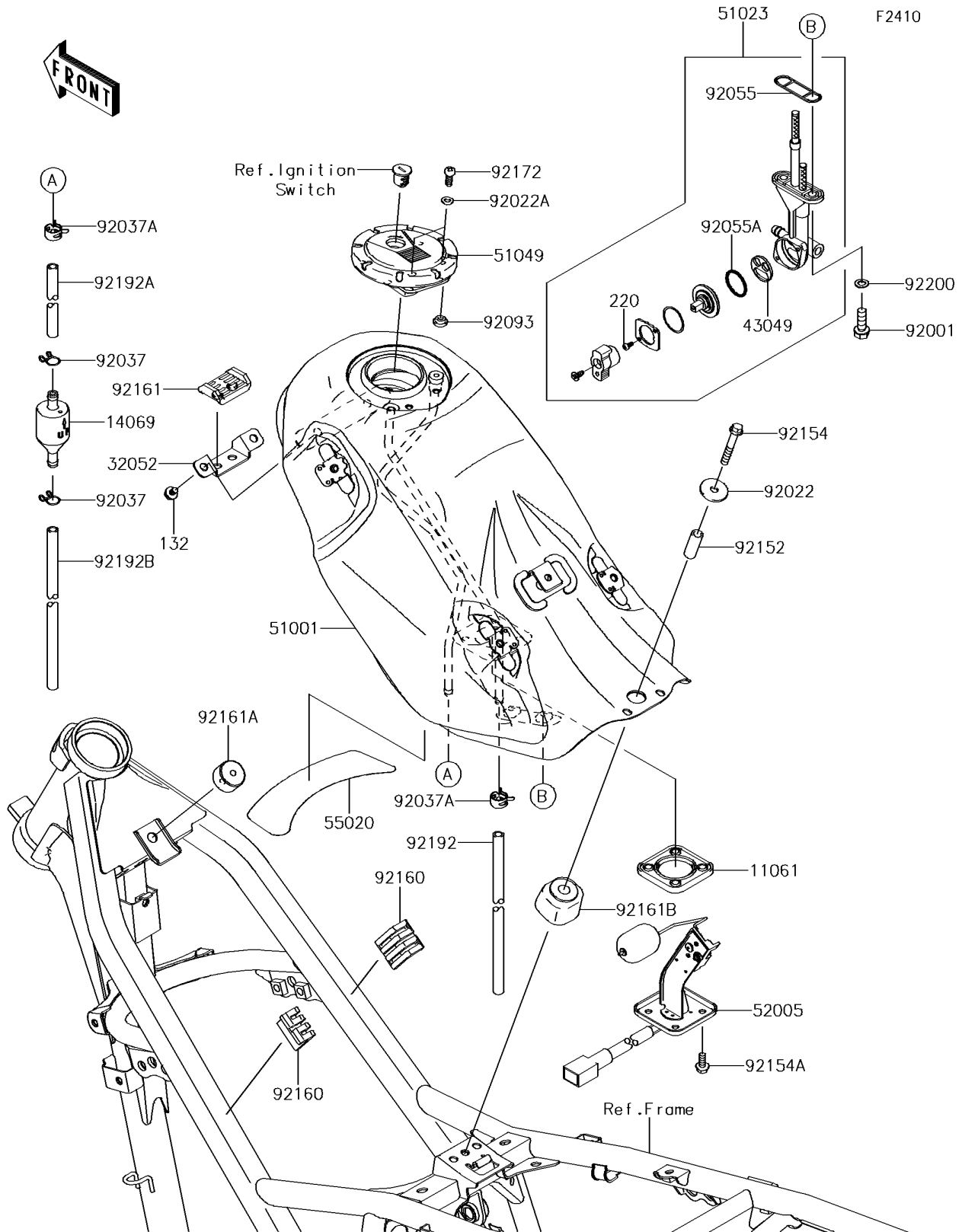


2017 KLX150L (Latin America) PARTS DIAGRAM

Fuel Tank



2017 KLX150L (Latin America) PARTS LIST

Fuel Tank

ITEM NAME	PART NUMBER	QUANTITY
GASKET,FUEL GAUGE (Ref # 11061)	11061-0279	1
BOLT-FLANGED-SMALL,6X8 (Ref # 132)	132BB0608	2
BREATHER,FUEL TANK (Ref # 14069)	14069-1004	1
SCREW-PAN-CROS,3X8 (Ref # 220)	220AA0308	2
BRACKET-TANK (Ref # 32052)	32052-0735	1
PACKING,TAP VALVE (Ref # 43049)	43049-1091	1
TANK-COMP-FUEL,F.S.BLACK (Ref # 51001)	51001-0828-25Q	1
TAP-ASSY,FUEL (Ref # 51023)	51023-0037	1
CAP-TANK,FUEL (Ref # 51049)	51049-0049	1
GAUGE,FUEL TANK (Ref # 52005)	52005-0748	1
GUARD (Ref # 55020)	55020-0950	1
BOLT,6X20 (Ref # 92001)	92001-1091	2
WASHER,6.5X24X2 (Ref # 92022)	92022-1690	1
WASHER,5.1X10X1.0 (Ref # 92022A)	92022-1977	2
CLAMP,TUBE (Ref # 92037)	92037-147	2
CLAMP (Ref # 92037A)	92037-1601	2
RING-O,FUEL TAP PACKING (Ref # 92055)	92055-1112	1
RING-O,TAP LEVER (Ref # 92055A)	92055-1419	1
SEAL,FUEL TANK CAP (Ref # 92093)	92093-1030	1
COLLAR,6.8X10X27 (Ref # 92152)	92152-2175	1
BOLT (Ref # 92154)	92154-1134	1
BOLT,FLANGED,5X12 (Ref # 92154A)	92154-1215	4
DAMPER,FUEL TANK (Ref # 92160)	92160-1328	2
DAMPER (Ref # 92161)	92161-0705	1
DAMPER (Ref # 92161A)	92161-1533	1
DAMPER (Ref # 92161B)	92161-1817	1
SCREW,5X10 (Ref # 92172)	92172-0496	2
TUBE,6X9X620 (Ref # 92192)	92192-1085	1
TUBE,6X9X56 (Ref # 92192A)	92192-1442	1

2017 KLX150L (Latin America) PARTS LIST

Fuel Tank

ITEM NAME	PART NUMBER	QUANTITY
TUBE,6X9X260 (Ref # 92192B)	92192-1443	1
WASHER,6.5X11.5X0.8 (Ref # 92200)	92200-0177	2