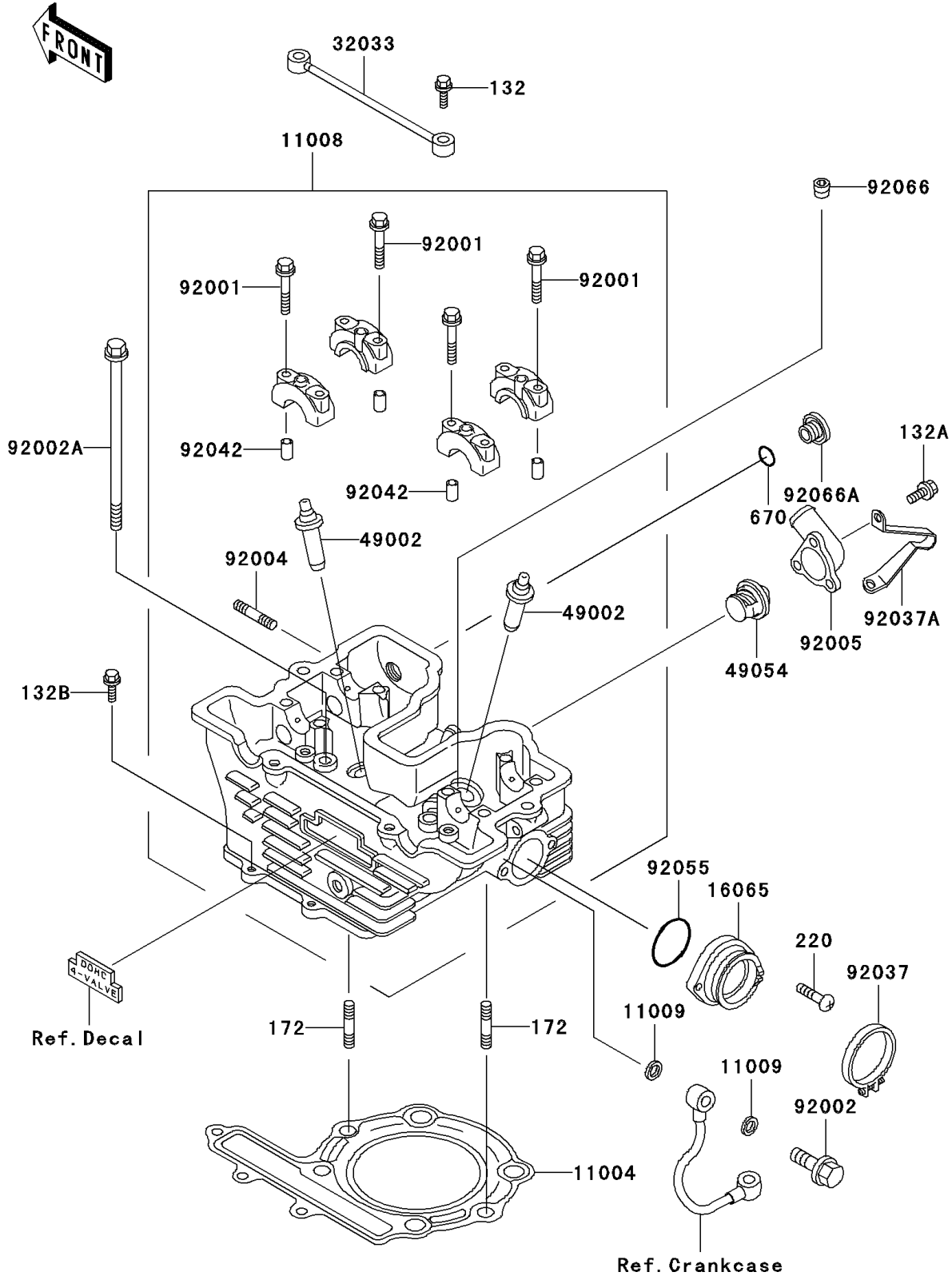


2003 Mojave 250 PARTS DIAGRAM

Cylinder Head

E1111



2003 Mojave 250 PARTS LIST

Cylinder Head

| ITEM NAME | PART NUMBER | QUANTITY |
|---------------------------------------|-------------|----------|
| BOLT-FLANGED-SMALL (Ref # 132) | 132G0625 | 2 |
| BOLT-FLANGED-SMALL (Ref # 132A) | 132J0612 | 3 |
| BOLT-FLANGED-SMALL (Ref # 132B) | 132J0625 | 2 |
| BOLT-STUD,8X22 (Ref # 172) | 172G0822 | 2 |
| SCREW-PAN-CROS,6X16,BLACK (Ref # 220) | 220C0616 | 2 |
| O RING,20MM (Ref # 670) | 670B2020 | 1 |
| GASKET-HEAD (Ref # 11004) | 11004-1121 | 1 |
| HEAD-COMP-CYLINDER (Ref # 11008) | 11008-1323 | 1 |
| GASKET,10X14.5X1.5 (Ref # 11009) | 11009-1105 | 2 |
| HOLDER-CARBURETOR (Ref # 16065) | 16065-1143 | 1 |
| PIPE,OIL (Ref # 32033) | 32033-1402 | 1 |
| GUIDE-VALVE (Ref # 49002) | 49002-1052 | AR |
| THERMOSTAT (Ref # 49054) | 49054-1003 | 1 |
| BOLT,6X46 (Ref # 92001) | 92001-1872 | 8 |
| BOLT,BANJO,10X25 (Ref # 92002) | 92002-1170 | 1 |
| BOLT,L=162 (Ref # 92002A) | 92002-1328 | 4 |
| STUD,8X25 (Ref # 92004) | 92004-1214 | 2 |
| FITTING (Ref # 92005) | 92005-1278 | 1 |
| CLAMP,ID=53,BLACK (Ref # 92037) | 92037-1304 | 1 |
| CLAMP,CLUTCH CABLE (Ref # 92037A) | 92037-1984 | 1 |
| PIN,DOWEL,6.3X8X14 (Ref # 92042) | 92042-007 | 8 |
| RING-O (Ref # 92055) | 92055-1255 | 1 |
| PLUG,PT1/8X7 (Ref # 92066) | 92066-1173 | 3 |
| PLUG,ROCKER SHAFT (Ref # 92066A) | 92066-1188 | 1 |