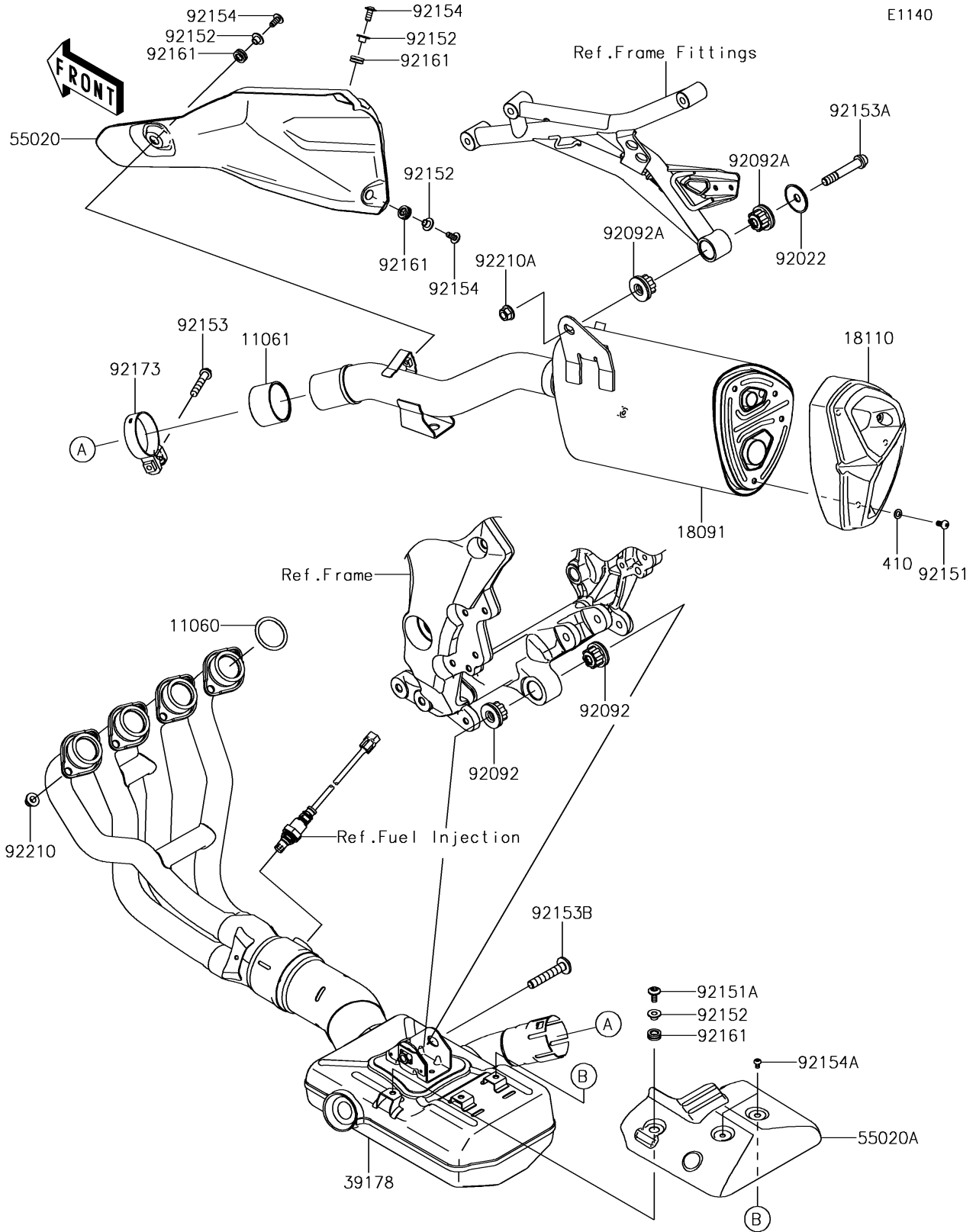


# 2018 VERSYS® 1000 LT PARTS DIAGRAM

Muffler(s)



## 2018 VERSYS® 1000 LT PARTS LIST

### Muffler(s)

ITEM NAME	PART NUMBER	QUANTITY
GASKET,EXHAUST PIPE HOLDER (Ref # 11060)	11060-1103	4
GASKET,MUFFLER CONNECTING (Ref # 11061)	11061-0726	1
BODY-COMP-MUFFLER (Ref # 18091)	18091-0939	1
BODY END-MUFFLER (Ref # 18110)	18110-0174	1
MANIFOLD-COMP-EXHAUST (Ref # 39178)	39178-0221	1
WASHER-PLAIN-SMALL,6MM (Ref # 410)	410S0600	4
GUARD,HEAT (Ref # 55020)	55020-0598	1
GUARD,CHAMBER (Ref # 55020A)	55020-0904	1
WASHER (Ref # 92022)	92022-289	1
BUSHING-RUBBER (Ref # 92092)	92092-1081	2
BUSHING-RUBBER,MUFFLER (Ref # 92092A)	92092-1087	2
BOLT,SOCKET,6X12 (Ref # 92151)	92151-1219	4
BOLT,SOCKET,6X14 (Ref # 92151A)	92151-1654	1
COLLAR,6.3X8.3X16 (Ref # 92152)	92152-0286	4
BOLT,8X45 (Ref # 92153)	92153-0702	1
BOLT,SOCKET,10X60 (Ref # 92153A)	92153-1837	1
BOLT,SOCKET,10X58 (Ref # 92153B)	92153-1930	1
BOLT,SOCKET,6X14 (Ref # 92154)	92154-0856	3
BOLT,SOCKET,6X8 (Ref # 92154A)	92154-0963	2
DAMPER (Ref # 92161)	92161-0306	4
CLAMP (Ref # 92173)	92173-1320	1
NUT,8MM (Ref # 92210)	92210-0076	8
NUT,LOCK,FLANGED,10MM (Ref # 92210A)	92210-1139	1