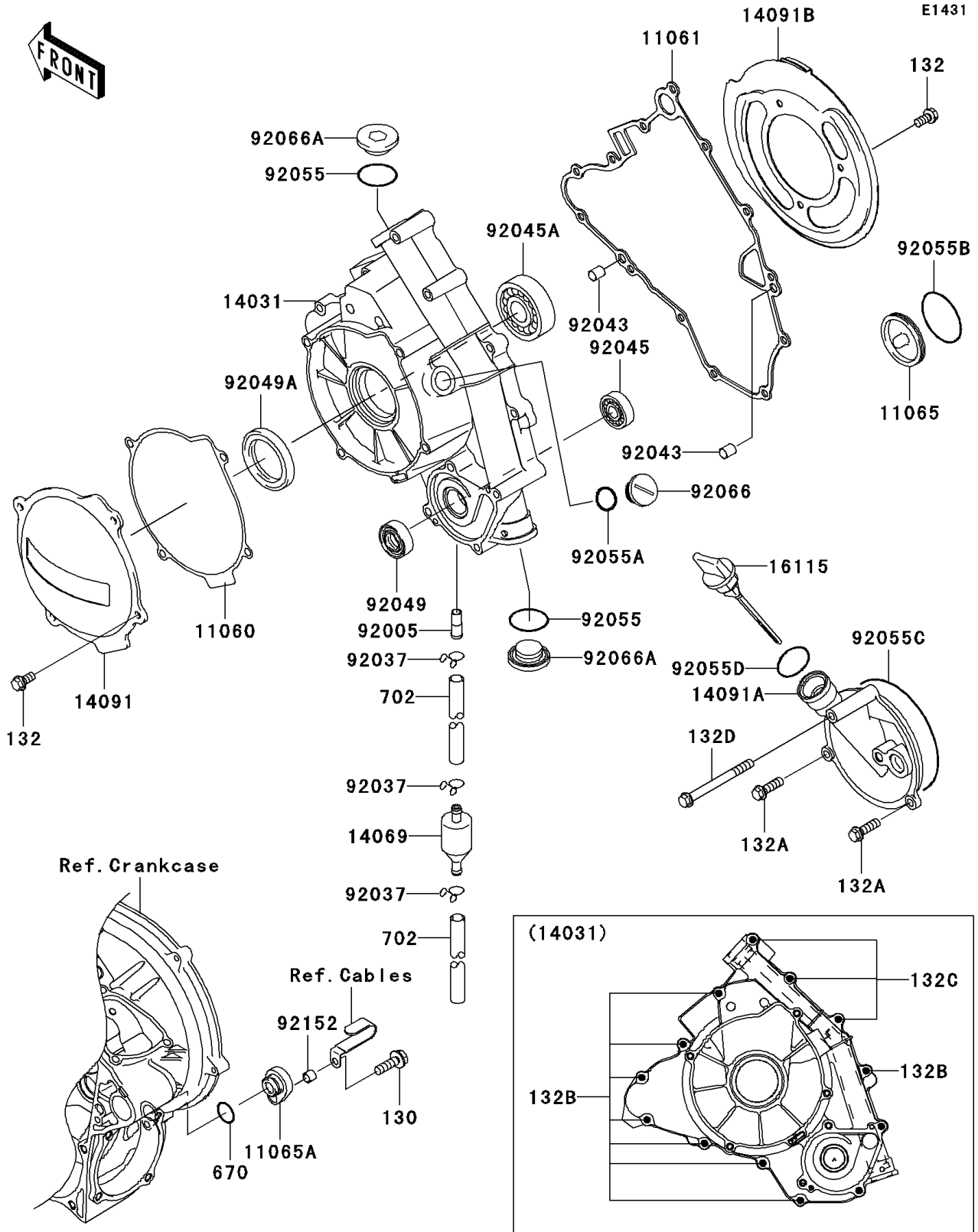


2004 KFX700 V Force PARTS DIAGRAM

Engine Cover(s)



2004 KFX700 V Force PARTS LIST

Engine Cover(s)

| ITEM NAME | PART NUMBER | QUANTITY |
|-------------------------------------|-------------|----------|
| BOLT-FLANGED (Ref # 130) | 130Z0620 | 1 |
| BOLT-FLANGED-SMALL (Ref # 132) | 132Y0612 | 7 |
| BOLT-FLANGED-SMALL (Ref # 132A) | 132Y0620 | 2 |
| BOLT-FLANGED-SMALL (Ref # 132B) | 132Y0630 | 8 |
| BOLT-FLANGED-SMALL (Ref # 132C) | 132Y0655 | 3 |
| BOLT-FLANGED-SMALL (Ref # 132D) | 132Y0665 | 1 |
| O RING,14MM (Ref # 670) | 670D2014 | 1 |
| TUBE-RUBBER (Ref # 702) | 702A07035 | 2 |
| GASKET,BLANK (Ref # 11060) | 11060-1717 | 1 |
| GASKET (Ref # 11061) | 11061-1119 | 1 |
| CAP (Ref # 11065) | 11065-1151 | 1 |
| CAP,OIL COVER (Ref # 11065A) | 11065-1252 | 1 |
| COVER-GENERATOR (Ref # 14031) | 14031-0030 | 1 |
| BREATHER (Ref # 14069) | 14069-1051 | 1 |
| COVER,GENERATOR COVER (Ref # 14091) | 14091-1538 | 1 |
| COVER,OIL (Ref # 14091A) | 14091-1543 | 1 |
| COVER,BELT CONVERTER (Ref # 14091B) | 14091-1571 | 1 |
| CAP-OIL FILLER (Ref # 16115) | 16115-0001 | 1 |
| FITTING (Ref # 92005) | 92005-1369 | 1 |
| CLAMP,TUBE (Ref # 92037) | 92037-147 | 3 |
| PIN,6.2X8X14 (Ref # 92043) | 92043-1263 | 2 |
| BEARING-BALL,6901 (Ref # 92045) | 92045-1246 | 1 |
| BEARING-BALL (Ref # 92045A) | 92045-1403 | 1 |
| SEAL-OIL,AC037AE0 (Ref # 92049) | 92049-1228 | 1 |
| SEAL-OIL (Ref # 92049A) | 92049-1576 | 1 |
| RING-O,25.7X2.4 (Ref # 92055) | 92055-1136 | 2 |
| RING-O (Ref # 92055A) | 92055-1146 | 1 |
| RING-O,44.7X2.4 (Ref # 92055B) | 92055-1279 | 1 |
| RING-O (Ref # 92055C) | 92055-1632 | 1 |

2004 KFX700 V Force PARTS LIST

Engine Cover(s)

| ITEM NAME | PART NUMBER | QUANTITY |
|----------------------------|-------------|----------|
| RING-O,20MM (Ref # 92055D) | 92055-2185 | 1 |
| PLUG,COVER (Ref # 92066) | 92066-0011 | 1 |
| PLUG,25X8 (Ref # 92066A) | 92066-0012 | 2 |
| COLLAR (Ref # 92152) | 92152-1332 | 1 |