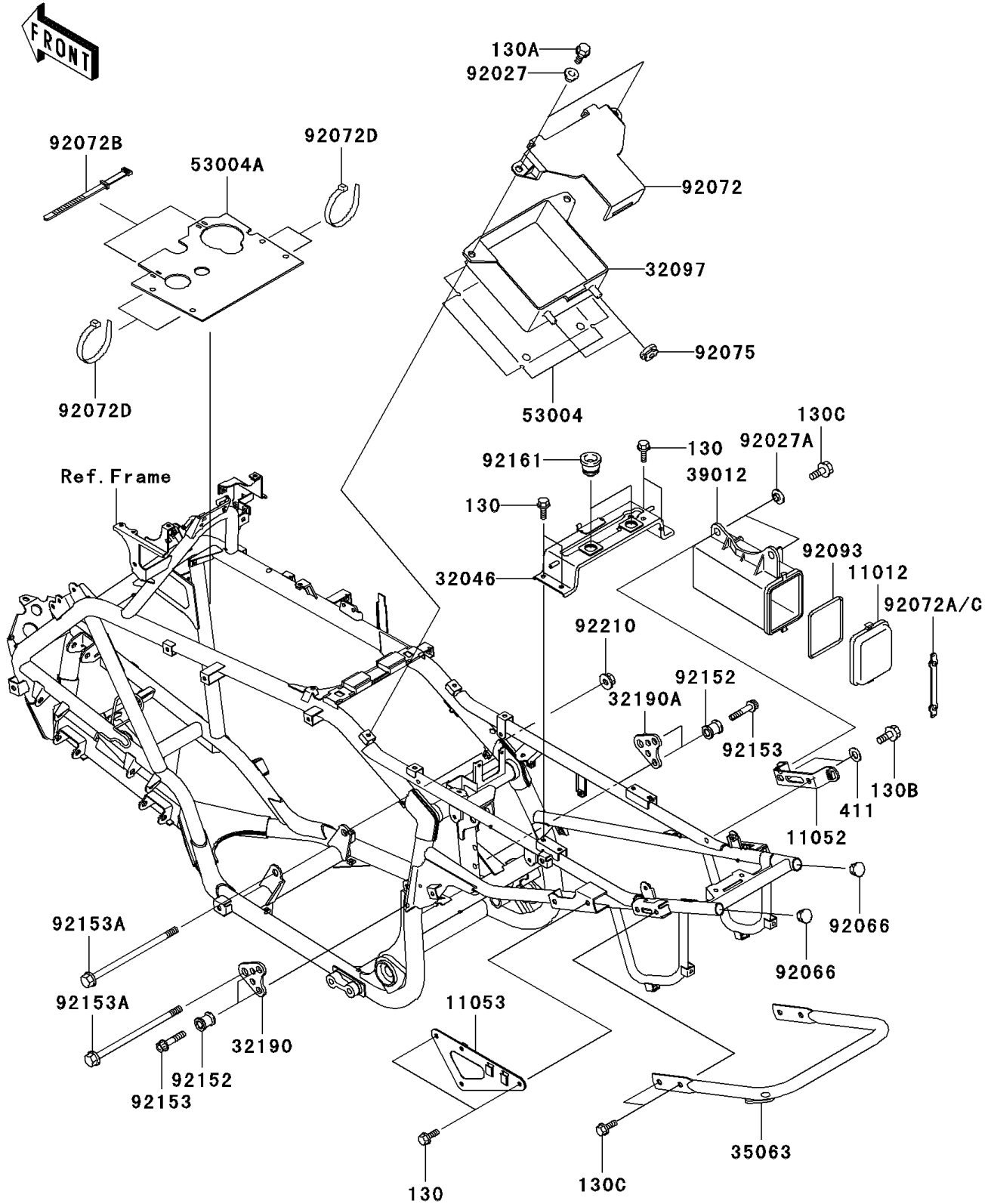


2005 KFX700 PARTS DIAGRAM

Frame Fittings

F2131



2005 KFX700 PARTS LIST

Frame Fittings

| ITEM NAME | PART NUMBER | QUANTITY |
|----------------------------------------------|---------------|----------|
| BOLT-FLANGED (Ref # 130) | 130J0612 | 6 |
| BOLT-FLANGED,6X16,BLACK (Ref # 130A) | 130J0616 | 2 |
| BOLT-FLANGED (Ref # 130B) | 130J0812 | 2 |
| BOLT-FLANGED,8X16,BLACK (Ref # 130C) | 130J0816 | 6 |
| WASHER-PLAIN,8MM,BLACK (Ref # 411) | 411F0800 | 2 |
| CAP,TOOL CASE (Ref # 11012) | 11012-1606 | 1 |
| BRACKET,TOOL CASE JOINT (Ref # 11052) | 11052-1930 | 1 |
| BRACKET,REGULATOR,LH (Ref # 11053) | 11053-0301 | 1 |
| BRACKET-SEAT (Ref # 32046) | 32046-0006 | 1 |
| CASE-BATTERY (Ref # 32097) | 32097-0002 | 1 |
| BRACKET-ENGINE,RR,UPP,LH,GRAY (Ref # 32190) | 32190-1315-HN | 1 |
| BRACKET-ENGINE,RR,UPP,RH,GRAY (Ref # 32190A) | 32190-1316-HN | 1 |
| STAY,GLOVE BAR,G.GRAY (Ref # 35063) | 35063-0033-HN | 1 |
| CASE-STORAGE (Ref # 39012) | 39012-1055 | 1 |
| MAT,BATTERY CASE (Ref # 53004) | 53004-0002 | 1 |
| MAT,WATER PROTECT (Ref # 53004A) | 53004-0009 | 1 |
| COLLAR (Ref # 92027) | 92027-1166 | 2 |
| COLLAR (Ref # 92027A) | 92027-1354 | 2 |
| PLUG (Ref # 92066) | 92066-1220 | 2 |
| BAND,BATTERY (Ref # 92072) | 92072-0006 | 1 |
| BAND,TOOL CASE CAP (Ref # 92072A) | 92072-0032 | 1 |
| BAND,L=123 (Ref # 92072B) | 92072-030 | 2 |
| BAND,L=188 (Ref # 92072D) | 92072-1239 | 4 |
| DAMPER (Ref # 92075) | 92075-1787 | 2 |
| SEAL,TOOL CASE CAP (Ref # 92093) | 92093-1247 | 1 |
| COLLAR,L=25 (Ref # 92152) | 92152-0061 | 4 |
| BOLT,SOCKET,10X45 (Ref # 92153) | 92153-0408 | 4 |
| BOLT,FLANGED,12X190 (Ref # 92153A) | 92153-1272 | 2 |
| DAMPER (Ref # 92161) | 92161-0048 | 2 |

2005 KFX700 PARTS LIST

Frame Fittings

| ITEM NAME | PART NUMBER | QUANTITY |
|-------------------------------------|-------------|----------|
| NUT,LOCK,FLANGED,12MM (Ref # 92210) | 92210-1150 | 1 |