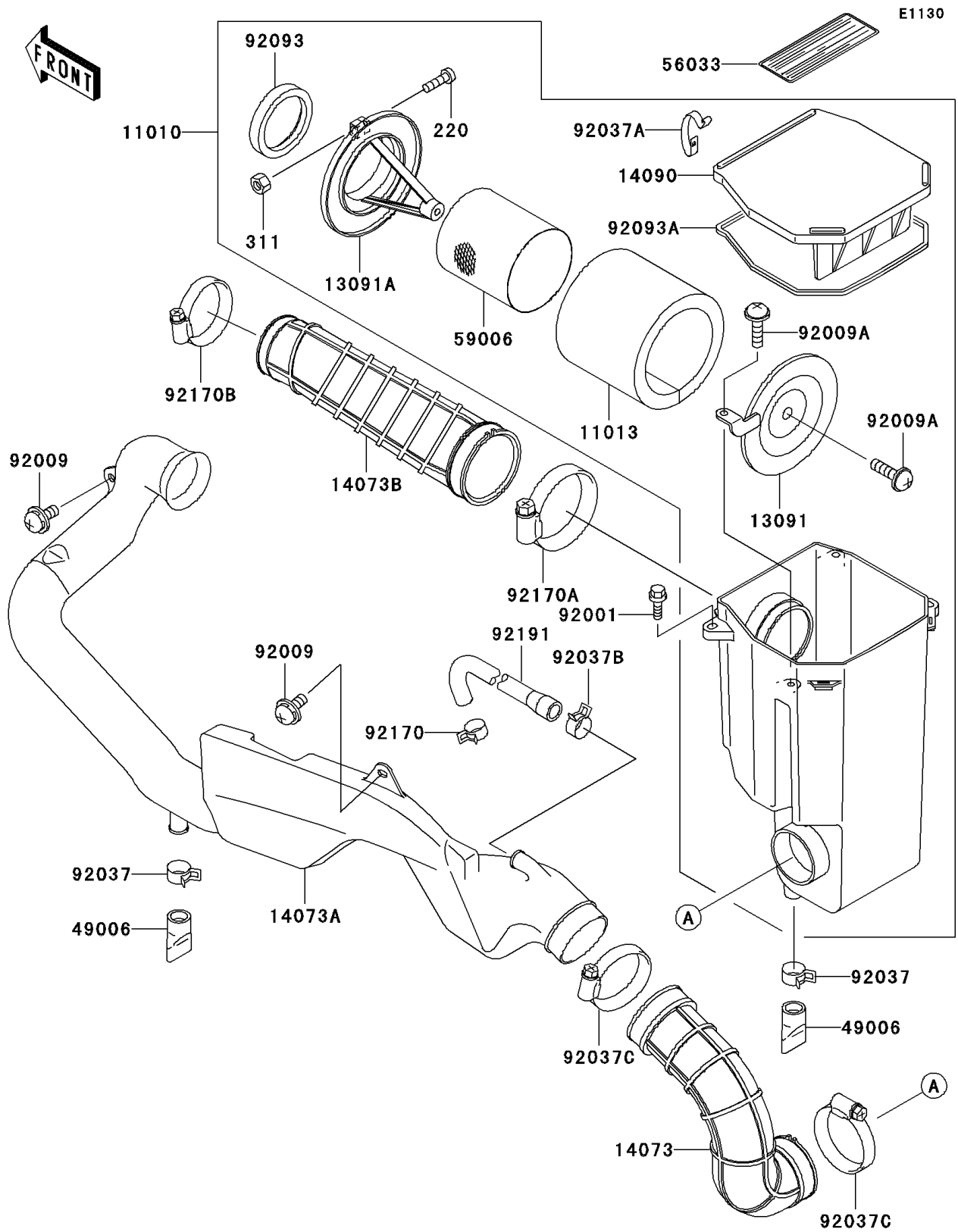


2002 Prairie 300 4X4 PARTS DIAGRAM

Air Cleaner



2002 Prairie 300 4X4 PARTS LIST

Air Cleaner

| ITEM NAME | PART NUMBER | QUANTITY |
|--|-------------|----------|
| SCREW-PAN-CROS,5X16 (Ref # 220) | 220B0516 | 1 |
| NUT-HEX (Ref # 311) | 311B0500 | 1 |
| FILTER-ASSY-AIR (Ref # 11010) | 11010-1681 | 1 |
| ELEMENT-AIR FILTER (Ref # 11013) | 11013-1255 | 1 |
| HOLDER,ELEMENT (Ref # 13091) | 13091-1488 | 1 |
| HOLDER,AIR FILTER ELEMENT (Ref # 13091A) | 13091-1565 | 1 |
| DUCT (Ref # 14073) | 14073-1654 | 1 |
| DUCT (Ref # 14073A) | 14073-1682 | 1 |
| DUCT (Ref # 14073B) | 14073-1735 | 1 |
| COVER,AIR FILTER (Ref # 14090) | 14090-1663 | 1 |
| BOOT (Ref # 49006) | 49006-1292 | 2 |
| LABEL-MANUAL,MAINTENANCE (Ref # 56033) | 56033-1079 | 1 |
| ARRESTER-FLAME (Ref # 59006) | 59006-1052 | 1 |
| BOLT,WP,6X20 (Ref # 92001) | 92001-1460 | 3 |
| SCREW,6X16 (Ref # 92009) | 92009-1276 | 2 |
| SCREW,6X16 (Ref # 92009A) | 92009-1890 | 2 |
| CLAMP (Ref # 92037) | 92037-1460 | 2 |
| CLAMP,AIR FILTER (Ref # 92037A) | 92037-1783 | 4 |
| CLAMP (Ref # 92037B) | 92037-1860 | 1 |
| CLAMP (Ref # 92037C) | 92037-3738 | 2 |
| SEAL,DUST (Ref # 92093) | 92093-1322 | 1 |
| SEAL,FILTER CASE (Ref # 92093A) | 92093-1404 | 1 |
| CLAMP (Ref # 92170) | 92170-1491 | 1 |
| CLAMP (Ref # 92170A) | 92170-1679 | 1 |
| CLAMP (Ref # 92170B) | 92170-1764 | 1 |
| TUBE (Ref # 92191) | 92191-1343 | 1 |