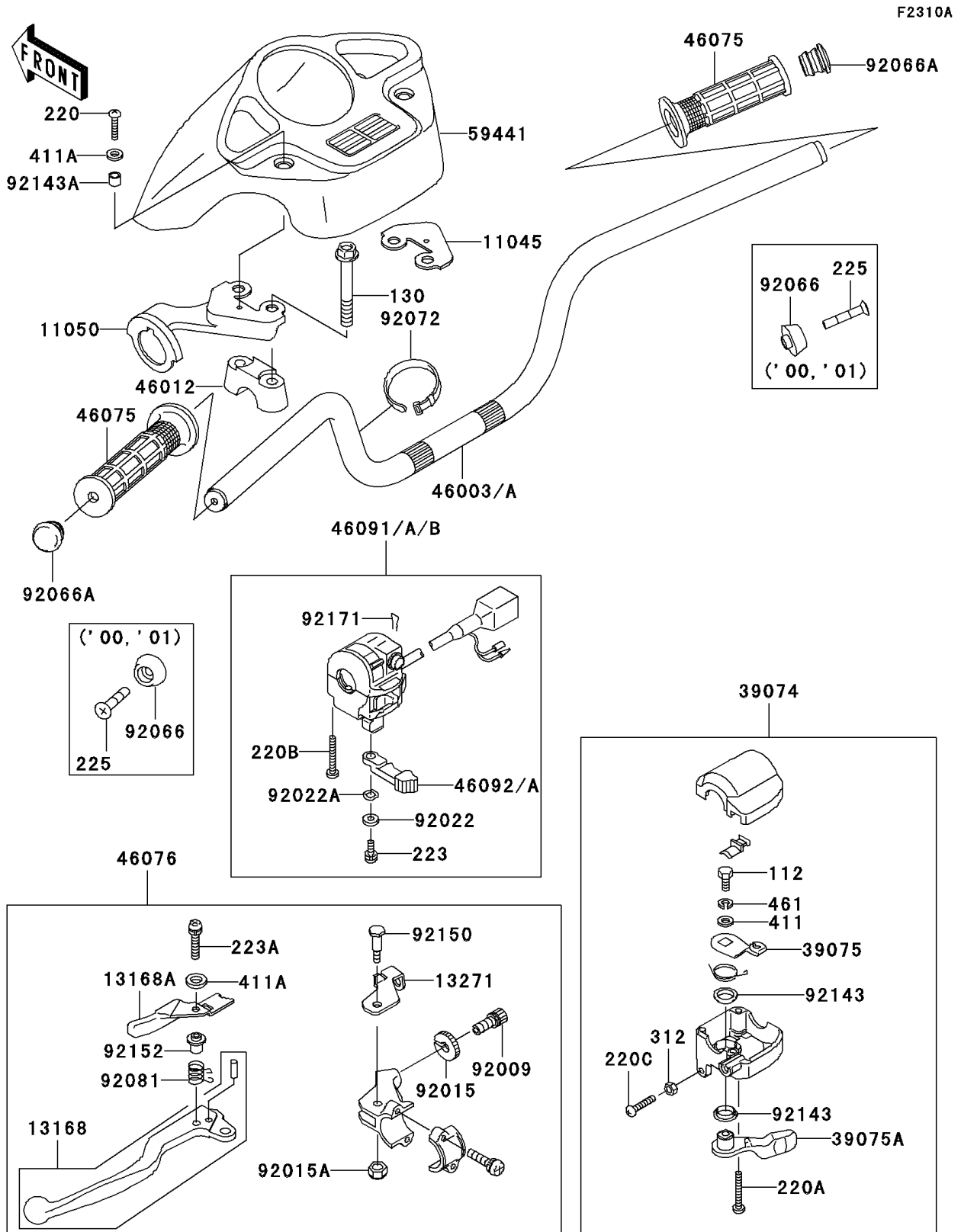


2000 Prairie 300 4X4 PARTS DIAGRAM

Handlebar(A2/A3/A4)



2000 Prairie 300 4X4 PARTS LIST

Handlebar(A2/A3/A4)

ITEM NAME	PART NUMBER	QUANTITY
BOLT-UPSET,6X14 (Ref # 112)	112D0614	1
BOLT-FLANGED,8X60 (Ref # 130)	130P0860	4
SCREW-PAN-CROS,4X20 (Ref # 220)	220C0420	2
SCREW-PAN-CROS,5X30 (Ref # 220A)	220C0530	2
SCREW-PAN-CROS,5X35 (Ref # 220B)	220C0535	2
SCREW-PAN-CROS,6X30,BLACK (Ref # 220C)	220C0630	1
BRACKET,HANDLE COVER (Ref # 11045)	11045-1925	1
BRACKET,HANDLE COVER,LH (Ref # 11050)	11050-1727	1
LEVER,LH (Ref # 13168)	13168-1672	1
LEVER,LOCK (Ref # 13168A)	13168-1673	1
PLATE,LOCK (Ref # 13271)	13271-1259	1
LEVER-ASSY-THROTTLE (Ref # 39074)	39074-1055	1
LEVER-THROTTLE,ARM (Ref # 39075)	39075-1054	1
LEVER-THROTTLE (Ref # 39075A)	39075-1059	1
HANDLE (Ref # 46003)	46003-1452	1
HOLDER-HANDLE (Ref # 46012)	46012-1168	2
GRIP (Ref # 46075)	46075-1056	2
LEVER-ASSY-GRIP,LH (Ref # 46076)	46076-1224	1
HOUSING-ASSY-CONTROL,LH (Ref # 46091)	46091-1726	1
LEVER-GRIP,CHOKE (Ref # 46092)	46092-1205	1
COVER-HANDLE,F.BLACK (Ref # 59441)	59441-1135-6Z	1
SCREW,CABLE ADJUST,8MM (Ref # 92009)	92009-1435	1
NUT,CABLE ADJUST LOCK,8MM (Ref # 92015)	92015-1596	1
NUT (Ref # 92015A)	92015-1829	1
WASHER,5MM (Ref # 92022)	92022-1837	1
WASHER,WAVE,5MM (Ref # 92022A)	92022-1838	1
PLUG,HANDLE (Ref # 92066)	92066-1191	2
BAND,L=149 (Ref # 92072)	92072-031	1
SPRING,LOCK RETURN (Ref # 92081)	92081-1358	1

2000 Prairie 300 4X4 PARTS LIST

Handlebar(A2/A3/A4)

ITEM NAME	PART NUMBER	QUANTITY
COLLAR (Ref # 92143)	92143-1138	2
COLLAR,5.6X8X7 (Ref # 92143A)	92143-1336	2
BOLT (Ref # 92150)	92150-1420	1
COLLAR (Ref # 92152)	92152-1176	1
CLAMP,CLIP (Ref # 92171)	92171-1095	1
SCREW-PAN-WS-CROS,5X12 (Ref # 223)	223C0512	1
SCREW-PAN-WS-CROS (Ref # 223A)	223C0520	1
SCREW-PAN-WSP-CROS,6X20 (Ref # 225)	225C0620	2
NUT-HEX,6MM,BLACK (Ref # 312)	312C0600	1
WASHER-PLAIN,6MM (Ref # 411)	411E0600	1
WASHER-PLAIN,5MM,BLACK (Ref # 411A)	411F0500	3
WASHER-SPRING (Ref # 461)	461L0600	1