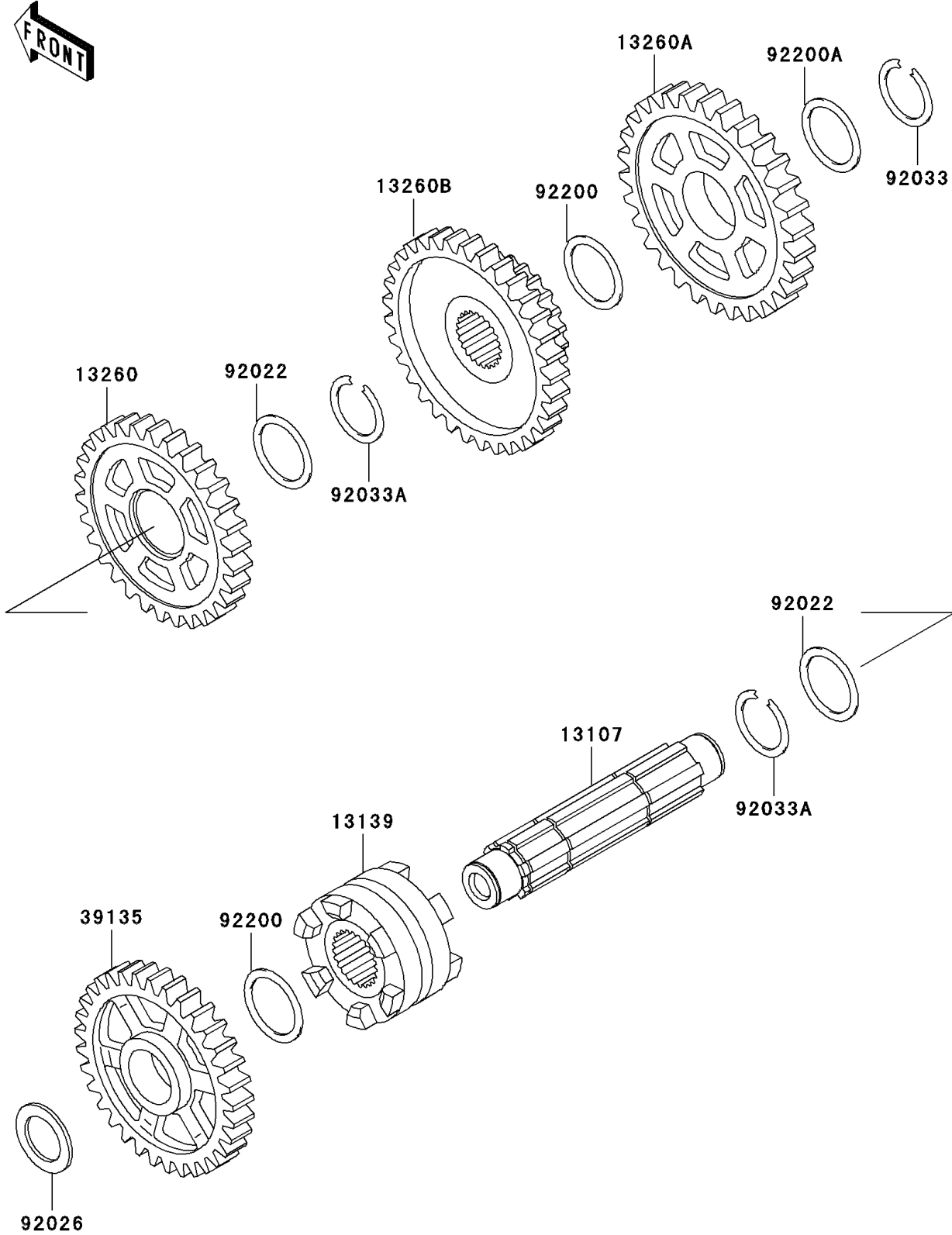


# 1999 Prairie 300 PARTS DIAGRAM

Gear Change Drum/Shift Fork(s)

E1362



## 1999 Prairie 300 PARTS LIST

### Gear Change Drum/Shift Fork(s)

| ITEM NAME                                 | PART NUMBER | QUANTITY |
|---|-------------|----------|
| SHAFT,IDLER (Ref # 13107)                 | 13107-1414  | 1        |
| SHIFTER,FORWARD HI&REVERSE (Ref # 13139)  | 13139-1086  | 1        |
| GEAR,FORWARD HIGH,43T (Ref # 13260)       | 13260-1766  | 1        |
| GEAR,FORWARD LOW,48T (Ref # 13260A)       | 13260-1767  | 1        |
| GEAR,IDLE SHAFT,36T (Ref # 13260B)        | 13260-1769  | 1        |
| SPROCKET-DRIVEN,REVERSE,37T (Ref # 39135) | 39135-1059  | 1        |
| WASHER,28.1X34X1.0 (Ref # 92022)          | 92022-1731  | 2        |
| SPACER,20.3X30X1.8 (Ref # 92026)          | 92026-1066  | 1        |
| RING-SNAP,24MM (Ref # 92033)              | 92033-026   | 1        |
| RING-SNAP,25.9X30.6X1.2 (Ref # 92033A)    | 92033-1037  | 2        |
| WASHER,24.2X32X0.50 (Ref # 92200)         | 92200-1400  | 2        |
| WASHER,24.2X32X1.00 (Ref # 92200A)        | 92200-1412  | 1        |