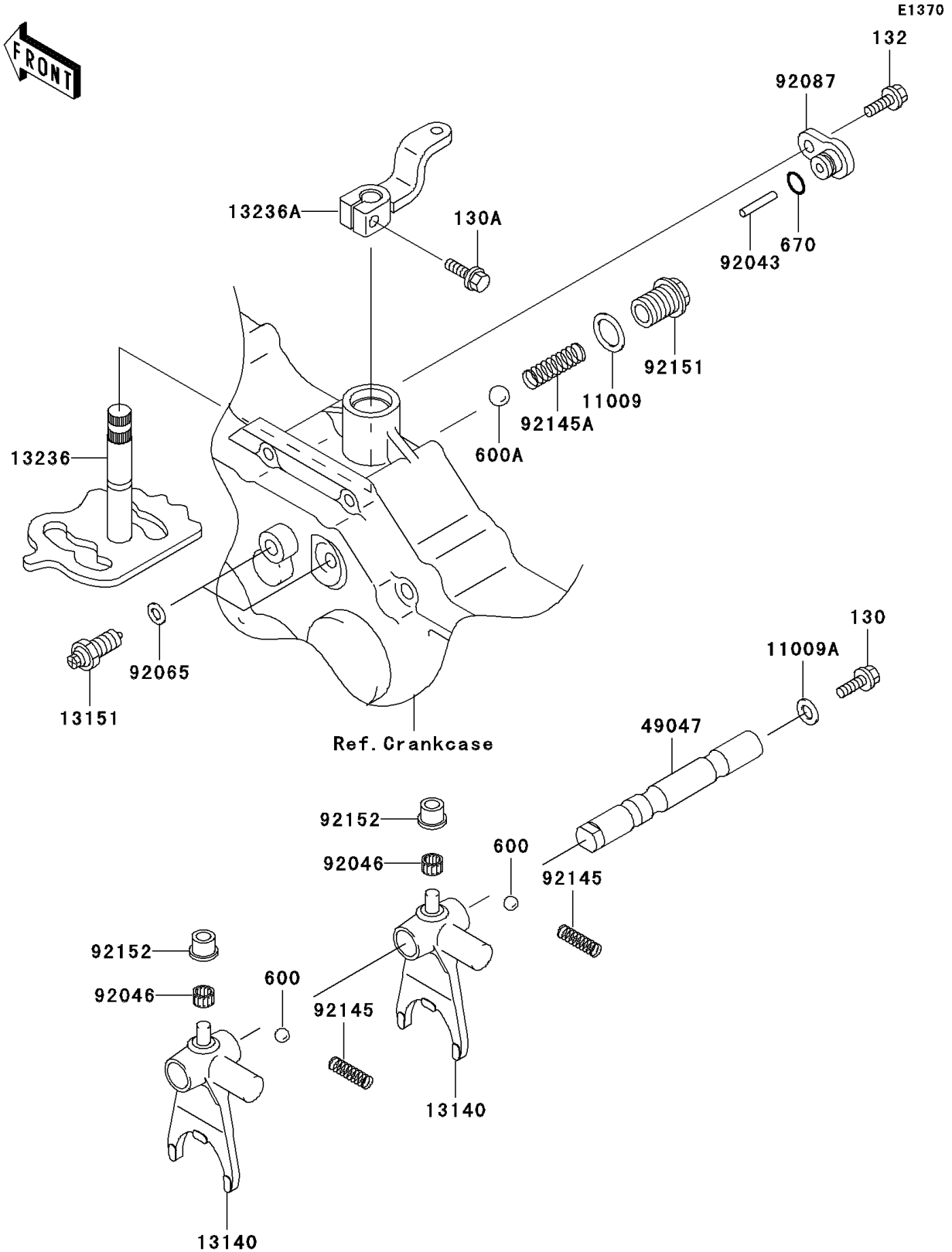


1999 Prairie 300 PARTS DIAGRAM

Gear Change Mechanism



1999 Prairie 300 PARTS LIST

Gear Change Mechanism

ITEM NAME	PART NUMBER	QUANTITY
BOLT-FLANGED,6X18 (Ref # 130)	130G0618	1
BOLT-FLANGED,6X20 (Ref # 130A)	130P0620	1
BOLT-FLANGED-SMALL,6X14 (Ref # 132)	132J0614	1
BALL-STEEL,11/32" (Ref # 600)	600A1100	2
BALL-STEEL,13/32" (Ref # 600A)	600A1300	1
O RING,10MM (Ref # 670)	670D1510	1
GASKET,15.5X22X1 (Ref # 11009)	11009-1008	1
GASKET,6.5X12X1.0 (Ref # 11009A)	11009-1568	1
FORK-SHIFT (Ref # 13140)	13140-1277	2
SWITCH-COMP,NEUTRAL (Ref # 13151)	13151-1069	2
LEVER-COMP (Ref # 13236)	13236-1325	1
LEVER-COMP,FORWARD/REVERSE (Ref # 13236A)	13236-1327	1
ROD-SHIFT (Ref # 49047)	49047-1099	1
PIN,4X34.8 (Ref # 92043)	92043-1579	1
BEARING-NEEDLE (Ref # 92046)	92046-1262	2
GASKET,10.5X16X1 (Ref # 92065)	92065-058	2
BUSHING-METER GEAR (Ref # 92087)	92087-1058	1
SPRING,L=27.9 (Ref # 92145)	92145-1178	2
SPRING (Ref # 92145A)	92145-1216	1
BOLT (Ref # 92151)	92151-1451	1
COLLAR (Ref # 92152)	92152-1091	2