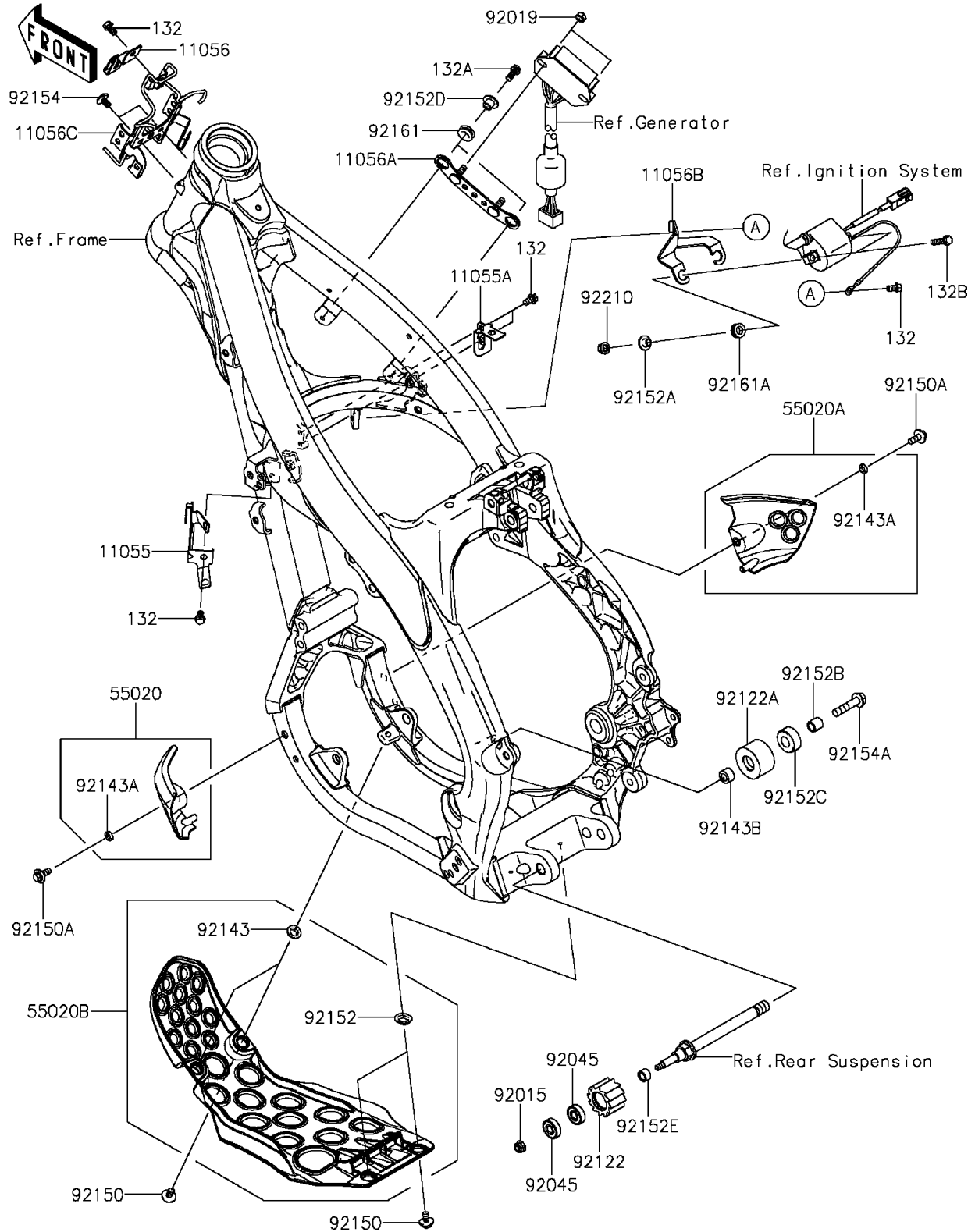


2016 KX™ 250F PARTS DIAGRAM

Frame Fittings

F2131



2016 KX™ 250F PARTS LIST

Frame Fittings

ITEM NAME	PART NUMBER	QUANTITY
BRACKET,COUPLER (Ref # 11055)	11055-1540	1
BRACKET (Ref # 11055A)	11055-1541	1
BRACKET,DIAG CONNECTOR (Ref # 11056)	11056-0070	1
BRACKET,REGULATOR (Ref # 11056A)	11056-0624	1
BRACKET,IG. COIL (Ref # 11056B)	11056-0961	1
BRACKET,ECU (Ref # 11056C)	11056-1657	1
BOLT-FLANGED-SMALL,6X10 (Ref # 132)	132BA0610	5
BOLT-FLANGED-SMALL,6X14 (Ref # 132A)	132BA0614	2
BOLT-FLANGED-SMALL,6X25 (Ref # 132B)	132BA0625	2
GUARD,ENGINE,SIDE,LH,EBONY (Ref # 55020)	55020-0435-6C	1
GUARD,ENGINE,SIDE,RH,EBONY (Ref # 55020A)	55020-0436-6C	1
GUARD,ENGINE,LWR,EBONY (Ref # 55020B)	55020-0443-6C	1
NUT,LOCK,FLANGED,6MM (Ref # 92015)	92015-1339	1
NUT,LOCK,6MM (Ref # 92019)	92019-008	2
BEARING-BALL,608LLU/2A (Ref # 92045)	92045-0060	2
ROLLER,CHAIN GUIDE (Ref # 92122)	92122-0016	1
ROLLER,CHAIN (Ref # 92122A)	92122-0042	1
COLLAR (Ref # 92143)	92143-1196	2
COLLAR (Ref # 92143A)	92143-1307	2
COLLAR,8.5X15X9 (Ref # 92143B)	92143-1642	1
BOLT,6X12 (Ref # 92150)	92150-1435	4
BOLT,FLANGED,6X16 (Ref # 92150A)	92150-1506	2
COLLAR (Ref # 92152)	92152-0052	2
COLLAR (Ref # 92152A)	92152-0620	2
COLLAR,8.5X12.5X12.5 (Ref # 92152B)	92152-0944	1
COLLAR,12.7X27.2X12 (Ref # 92152C)	92152-0945	1
COLLAR (Ref # 92152D)	92152-1449	2
COLLAR,8.1X12.5X7.5 (Ref # 92152E)	92152-1624	1
BOLT,SOCKET,6X10 (Ref # 92154)	92154-0774	2

2016 KX™ 250F PARTS LIST

Frame Fittings

ITEM NAME	PART NUMBER	QUANTITY
BOLT,FLANGED,8X35 (Ref # 92154A)	92154-0913	1
DAMPER (Ref # 92161)	92161-0266	2
DAMPER,8.5X15.5X5.5 (Ref # 92161A)	92161-0878	2
NUT,FLANGED,6MM (Ref # 92210)	92210-0630	2