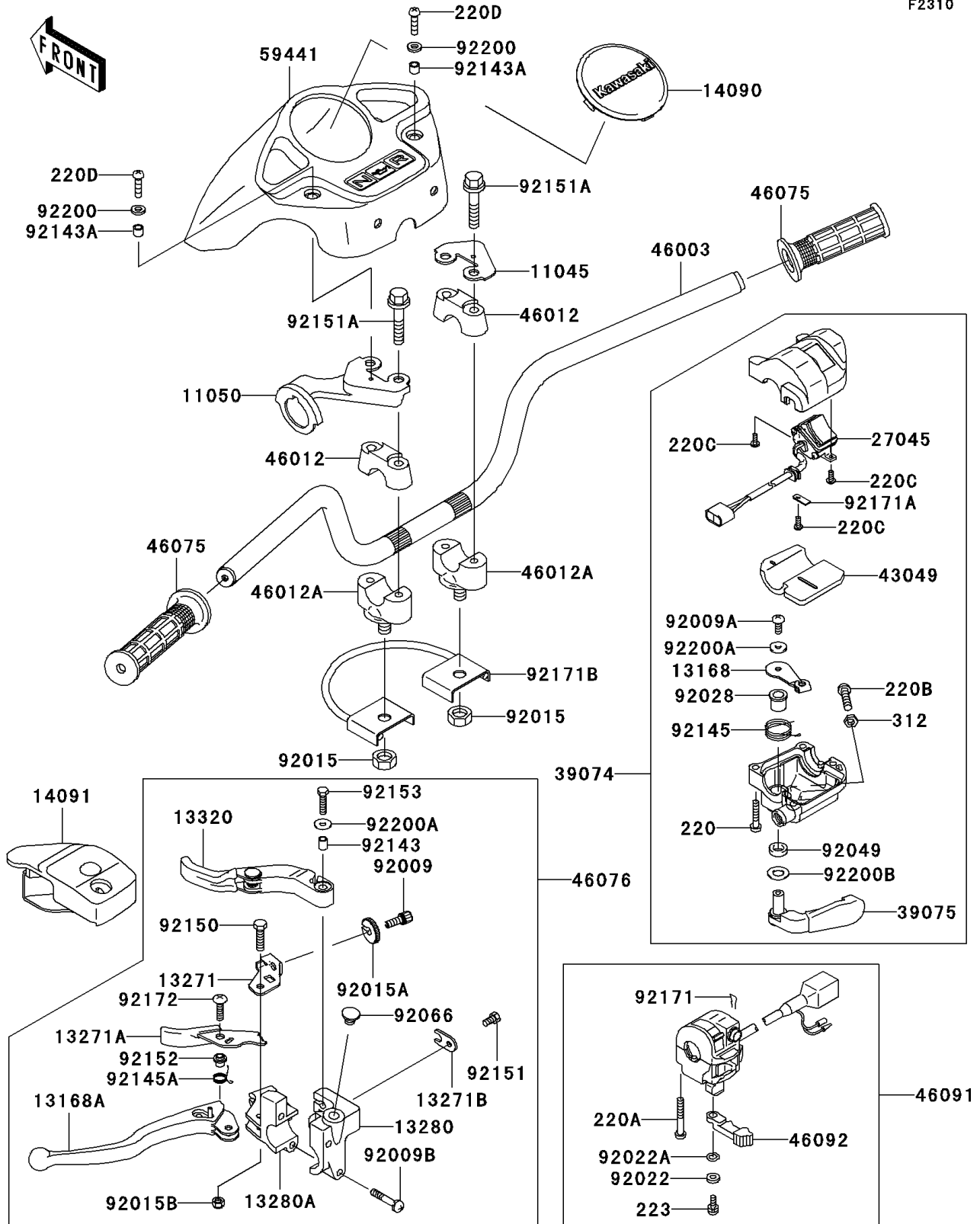


2003 Prairie 360 4X4 PARTS DIAGRAM

Handlebar

F2310



2003 Prairie 360 4X4 PARTS LIST

Handlebar

ITEM NAME	PART NUMBER	QUANTITY
BRACKET,HANDLE COVER (Ref # 11045)	11045-1925	1
BRACKET,HANDLE COVER,LH (Ref # 11050)	11050-1727	1
LEVER (Ref # 13168)	13168-1715	1
LEVER,LH (Ref # 13168A)	13168-1736	1
PLATE,LOCK (Ref # 13271)	13271-1259	1
PLATE,LEVER LOCK (Ref # 13271A)	13271-1635	1
PLATE,WIRE OUTER STOPPER (Ref # 13271B)	13271-1636	1
HOLDER,DIFF LOCK LEVER (Ref # 13280)	13280-1226	1
HOLDER,LEVER,LH (Ref # 13280A)	13280-1227	1
LEVER-ASSY,DEFF LOCK (Ref # 13320)	13320-1018	1
COVER,BLIND CAP,F.BLACK (Ref # 14090)	14090-1945-6Z	1
COVER,DIFF LOCK LEVER (Ref # 14091)	14091-1403	1
SWITCH-ASSY (Ref # 27045)	27045-1081	1
LEVER-ASSY-THROTTLE (Ref # 39074)	39074-1062	1
LEVER-THROTTLE (Ref # 39075)	39075-1062	1
PACKING (Ref # 43049)	43049-1088	1
HANDLE (Ref # 46003)	46003-7503	1
HOLDER-HANDLE (Ref # 46012)	46012-1168	2
HOLDER-HANDLE (Ref # 46012A)	46012-7501	2
GRIP,HANDLE (Ref # 46075)	46075-7501	2
LEVER-ASSY-GRIP,DEFF LOCK (Ref # 46076)	46076-1238	1
HOUSING-ASSY-CONTROL,LH (Ref # 46091)	46091-1848	1
LEVER-GRIP,CHOKE (Ref # 46092)	46092-1217	1
COVER-HANDLE,F.BLACK (Ref # 59441)	59441-7501-6Z	1
SCREW,CABLE ADJUST,8MM (Ref # 92009)	92009-1435	1
SCREW (Ref # 92009A)	92009-1959	1
SCREW,6X30 (Ref # 92009B)	92009-1961	2
NUT,LOCK,10MM (Ref # 92015)	92015-1429	2
NUT,CABLE ADJUST LOCK,8MM (Ref # 92015A)	92015-1596	1

2003 Prairie 360 4X4 PARTS LIST

Handlebar

ITEM NAME	PART NUMBER	QUANTITY
NUT (Ref # 92015B)	92015-1829	1
WASHER,5MM (Ref # 92022)	92022-1837	1
WASHER,WAVE,5MM (Ref # 92022A)	92022-1838	1
BUSHING (Ref # 92028)	92028-1986	1
SEAL-OIL (Ref # 92049)	92049-1578	1
PLUG,9.5X8,POLYETHYLENE (Ref # 92066)	92066-1077	1
COLLAR (Ref # 92143)	92143-1216	1
COLLAR,5.6X8X7 (Ref # 92143A)	92143-1336	2
SPRING (Ref # 92145)	92145-1392	1
SPRING (Ref # 92145A)	92145-1429	1
BOLT (Ref # 92150)	92150-1420	1
SCREW-PAN-CROS,5X25 (Ref # 220)	220C0525	3
SCREW-PAN-CROS,5X35 (Ref # 220A)	220C0535	2
SCREW-PAN-CROS,6X25 (Ref # 220B)	220C0625	1
SCREW-PAN-CROSS,3X8 (Ref # 220C)	220D0308	3
SCREW-PAN-CROSS,4X16 (Ref # 220D)	220F0416	2
SCREW-PAN-WS-CROS,5X12 (Ref # 223)	223C0512	1
NUT-HEX,6MM,BLACK (Ref # 312)	312C0600	1
BOLT,5X10 (Ref # 92151)	92151-1975	1
BOLT,FLANGED,8X40 (Ref # 92151A)	92151-2130	4
COLLAR (Ref # 92152)	92152-1176	1
BOLT,5X20 (Ref # 92153)	92153-1129	1
CLAMP,CLIP (Ref # 92171)	92171-1095	1
CLAMP (Ref # 92171A)	92171-1344	1
CLAMP,HARNESS&CABLE (Ref # 92171B)	92171-1503	1
SCREW,5X20 (Ref # 92172)	92172-0078	1
WASHER,4.5X11.5X0.8 (Ref # 92200)	92200-1361	2
WASHER (Ref # 92200A)	92200-1558	2
WASHER (Ref # 92200B)	92200-1559	1