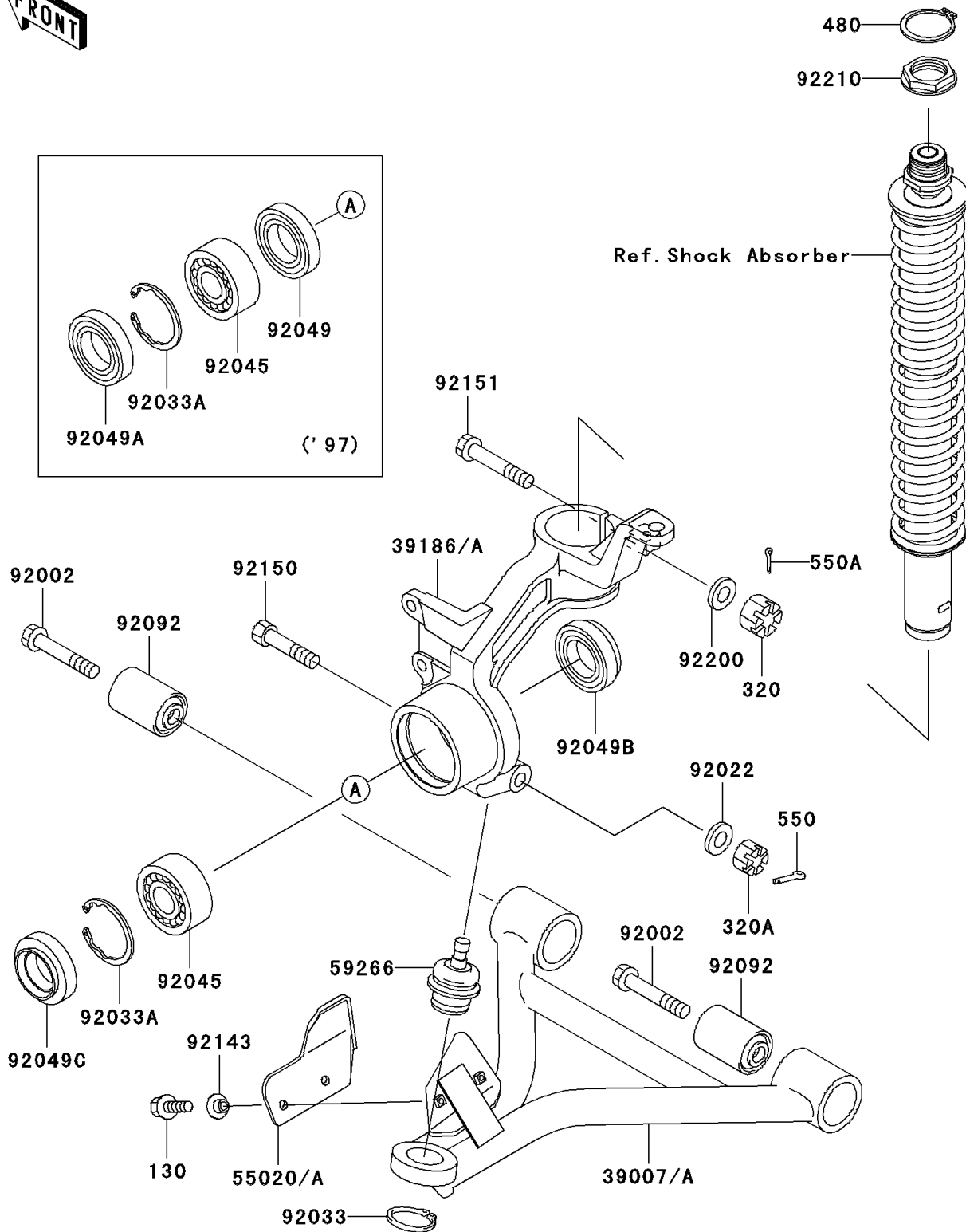
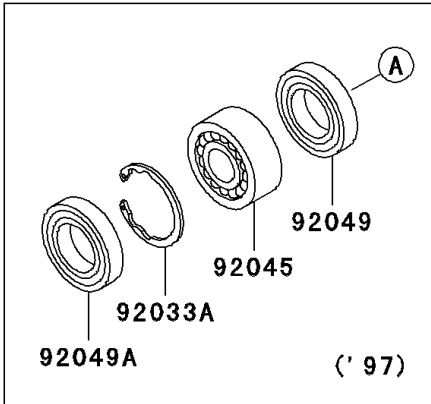


# 1997 Prairie 400 4X4 PARTS DIAGRAM

Suspension

F2150



# 1997 Prairie 400 4X4 PARTS LIST

## Suspension

| ITEM NAME                                 | PART NUMBER | QUANTITY |
|---|-------------|----------|
| BOLT-FLANGED,6X14,BLACK (Ref # 130)       | 130J0614    | 4        |
| NUT-CASTLE (Ref # 320)                    | 320G1200    | 2        |
| NUT-CASTLE (Ref # 320A)                   | 320H1000    | 2        |
| CIRCLIP-TYPE-C,32MM (Ref # 480)           | 480J3200    | 2        |
| PIN-COTTER,2.0X15 (Ref # 550)             | 550D2015    | 2        |
| PIN-COTTER,3.0X25 (Ref # 550A)            | 550D3025    | 2        |
| ARM-SUSP,FR,LH,LWR (Ref # 39007)          | 39007-1259  | 1        |
| ARM-SUSP,FR,RH,LWR (Ref # 39007A)         | 39007-1260  | 1        |
| KNUCKLE,FR,LH (Ref # 39186)               | 39186-1100  | 1        |
| KNUCKLE,FR,RH (Ref # 39186A)              | 39186-1101  | 1        |
| GUARD,LH (Ref # 55020)                    | 55020-1623  | 1        |
| GUARD,RH (Ref # 55020A)                   | 55020-1624  | 1        |
| JOINT-BALL (Ref # 59266)                  | 59266-1098  | 2        |
| BOLT,FLANGED,12X67 (Ref # 92002)          | 92002-1861  | 4        |
| WASHER,10.2X16X1 (Ref # 92022)            | 92022-1829  | 2        |
| RING-SNAP,30MM (Ref # 92033)              | 92033-1218  | 2        |
| RING-SNAP,55MM (Ref # 92033A)             | 92033-1274  | 2        |
| BEARING-BALL,DAC3055C2RKCD3 (Ref # 92045) | 92045-1222  | 2        |
| SEAL-OIL (Ref # 92049)                    | 92049-1321  | 2        |
| SEAL-OIL,SDD38 55 8 (Ref # 92049A)        | 92049-1322  | 2        |
| BUSHING-RUBBER (Ref # 92092)              | 92092-1065  | 4        |
| COLLAR (Ref # 92143)                      | 92143-1331  | 4        |
| BOLT,10X44 (Ref # 92150)                  | 92150-1226  | 2        |
| BOLT,FLANGED,12X65.5 (Ref # 92151)        | 92151-1101  | 2        |
| WASHER,12.3X23X2.3 (Ref # 92200)          | 92200-1004  | 2        |
| NUT,35MM (Ref # 92210)                    | 92210-1066  | 2        |