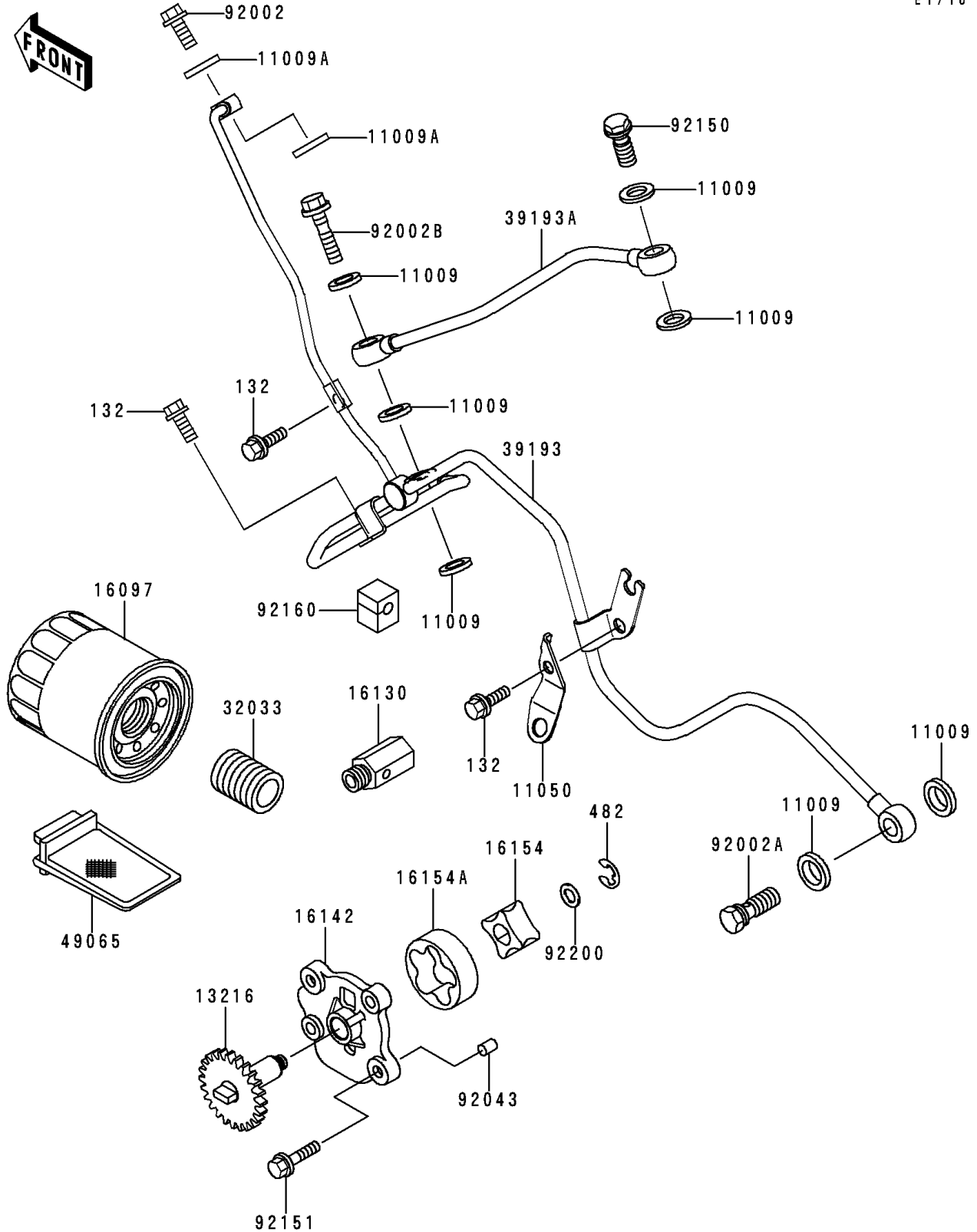


# 1998 Prairie 400 PARTS DIAGRAM

Oil Pump/Oil Filter

E1710



# 1998 Prairie 400 PARTS LIST

## Oil Pump/Oil Filter

ITEM NAME	PART NUMBER	QUANTITY
BOLT-FLANGED-SMALL (Ref # 132)	132G0612	3
CIRCLIP-TYPE-E,6MM (Ref # 482)	482J6000	1
GASKET,10X14.5X1.5 (Ref # 11009)	11009-1105	7
GASKET,OIL PIPE,8.2X14X1.0 (Ref # 11009A)	11009-1344	2
BRACKET (Ref # 11050)	11050-1304	1
GEAR-COMP,OIL PUMP (Ref # 13216)	13216-1165	1
FILTER-ASSY-OIL (Ref # 16097)	16097-1063	1
VALVE-ASSY-RELIEF (Ref # 16130)	16130-1001	1
COVER-PUMP (Ref # 16142)	16142-1136	1
ROTOR-PUMP,INNER (Ref # 16154)	16154-2059	1
ROTOR-PUMP,OUTER (Ref # 16154A)	16154-2060	1
PIPE,OIL FILTER (Ref # 32033)	32033-1535	1
PIPE-OIL,HEAD-TRANSMISSIN (Ref # 39193)	39193-1027	1
PIPE-OIL,CRANKSHAFT (Ref # 39193A)	39193-1028	1
FILTER-OIL (Ref # 49065)	49065-1070	1
BOLT,BANJO,8X20 (Ref # 92002)	92002-1429	1
BOLT,OIL,L=23 (Ref # 92002A)	92002-1888	1
BOLT,OIL,L=37 (Ref # 92002B)	92002-1909	1
PIN,DOWEL,8X10 (Ref # 92043)	92043-1302	2
BOLT,BANJO,10X23 (Ref # 92150)	92150-1123	1
BOLT,6X22 (Ref # 92151)	92151-1197	4
DAMPER (Ref # 92160)	92160-1522	1
WASHER,7.7X13X1.0 (Ref # 92200)	92200-1107	1