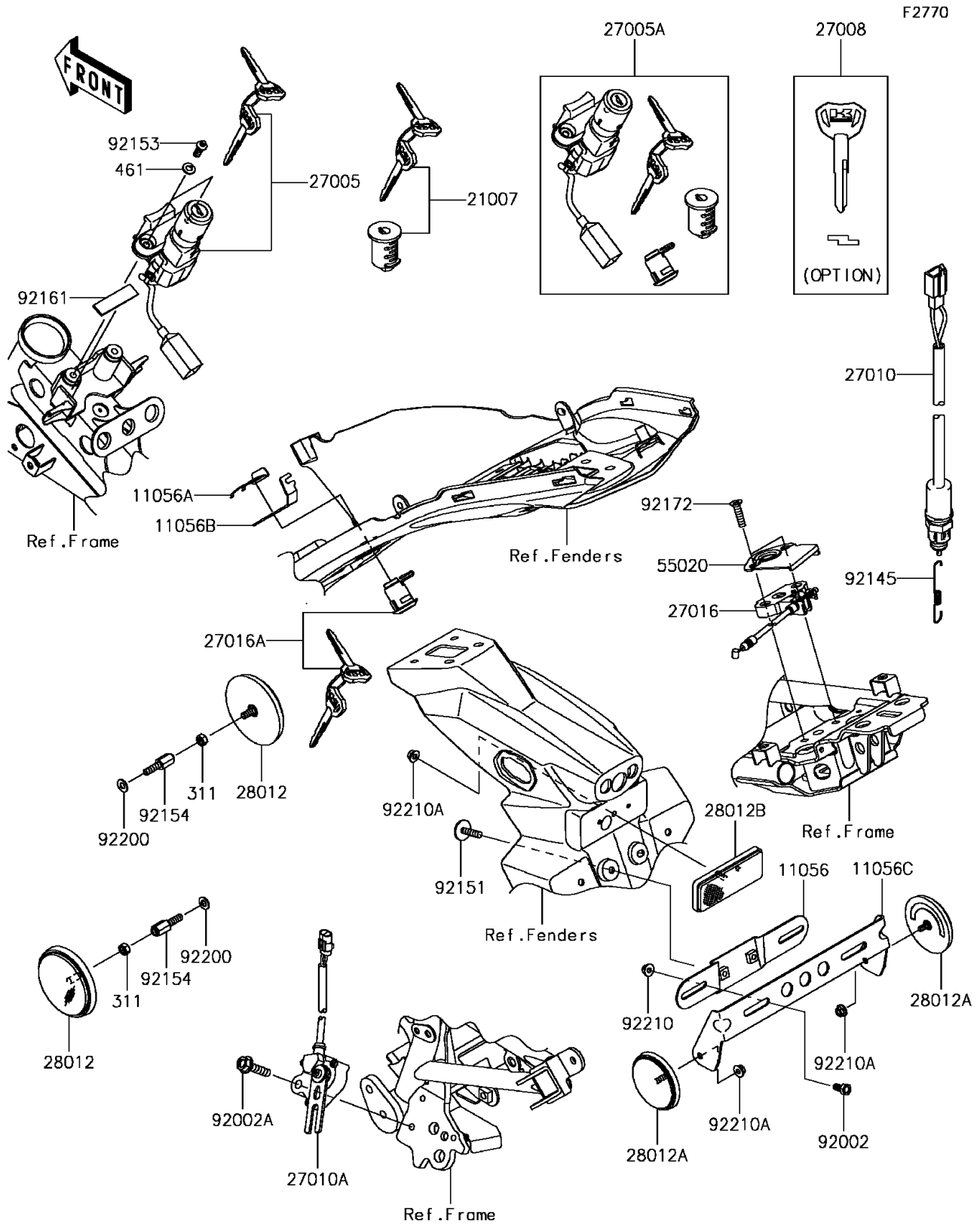


# 2017 Z125 Pro PARTS DIAGRAM

Ignition Switch/Locks/Reflectors



## 2017 Z125 Pro PARTS LIST

### Ignition Switch/Locks/Reflectors

| ITEM NAME                              | PART NUMBER | QUANTITY |
|--|-------------|----------|
| BRACKET,LICENSE PLATE (Ref # 11056)    | 11056-0139  | 1        |
| BRACKET,CLASP (Ref # 11056A)           | 11056-0238  | 1        |
| BRACKET,SEAT LOCK (Ref # 11056B)       | 11056-2119  | 1        |
| BRACKET (Ref # 11056C)                 | 11056-7906  | 1        |
| ROTOR (Ref # 21007)                    | 21007-5081  | 1        |
| SWITCH-ASSY-IGNITION (Ref # 27005)     | 27005-0612  | 1        |
| SWITCH-ASSY-IGNITION (Ref # 27005A)    | 27005-5158  | 1        |
| KEY-LOCK,BLANK (Ref # 27008)           | 27008-0559  | 1        |
| SWITCH,RR BRAKE (Ref # 27010)          | 27010-0828  | 1        |
| SWITCH,SIDE STAND (Ref # 27010A)       | 27010-0829  | 1        |
| LOCK-ASSY,SEAT STRIKER (Ref # 27016)   | 27016-0081  | 1        |
| LOCK-ASSY (Ref # 27016A)               | 27016-5393  | 1        |
| REFLECTOR-REFLEX,FR,SIDE (Ref # 28012) | 28012-0001  | 2        |
| REFLECTOR-REFLEX (Ref # 28012A)        | 28012-0002  | 2        |
| REFLECTOR-REFLEX (Ref # 28012B)        | 28012-1077  | 1        |
| NUT-HEX,5MM (Ref # 311)                | 311AB0500   | 2        |
| WASHER-SPRING,6MM (Ref # 461)          | 461DA0600   | 2        |
| GUARD,SEAT LOCK (Ref # 55020)          | 55020-0554  | 1        |
| BOLT,6X12 (Ref # 92002)                | 92002-1132  | 2        |
| BOLT,FLANGED,6X25 (Ref # 92002A)       | 92002-1582  | 1        |
| SPRING (Ref # 92145)                   | 92145-1723  | 1        |
| BOLT,6X25 (Ref # 92151)                | 92151-1241  | 2        |
| BOLT,TORX,6X16 (Ref # 92153)           | 92153-0967  | 2        |
| BOLT,6X20 (Ref # 92154)                | 92154-2193  | 2        |
| DAMPER (Ref # 92161)                   | 92161-1359  | 1        |
| SCREW,6X25 (Ref # 92172)               | 92172-0965  | 2        |
| WASHER,6.5X16X1.0 (Ref # 92200)        | 92200-0796  | 2        |
| NUT,FLANGED,6MM (Ref # 92210)          | 92210-1514  | 2        |
| NUT,FLANGED,5MM (Ref # 92210A)         | 92210-1607  | 3        |