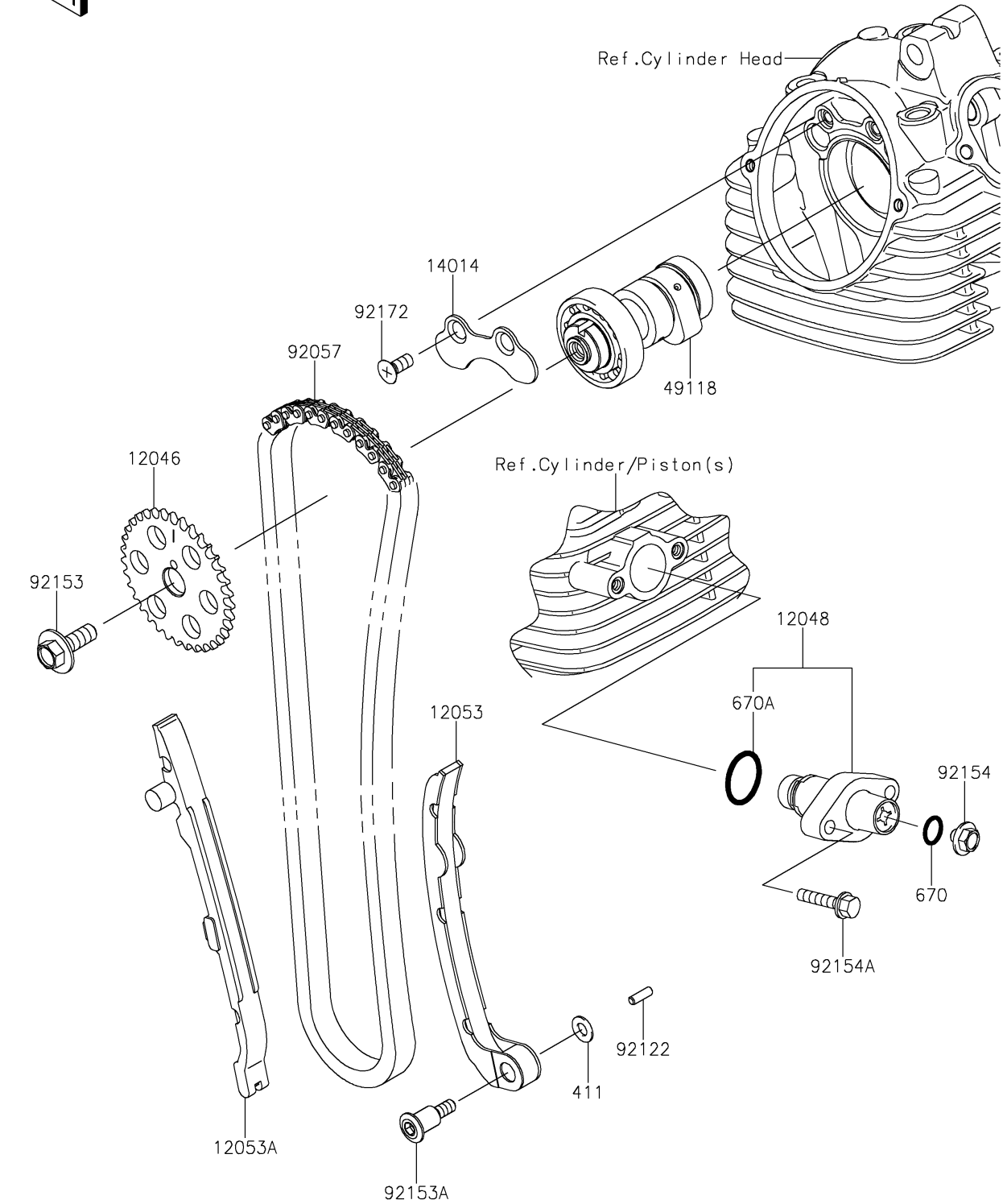


# 2019 KLX®140 PARTS DIAGRAM

Camshaft(s)/Tensioner

E1230



## 2019 KLX®140 PARTS LIST

### Camshaft(s)/Tensioner

| ITEM NAME                        | PART NUMBER | QUANTITY |
|----------------------------------|-------------|----------|
| SPROCKET,36T (Ref # 12046)       | 12046-0084  | 1        |
| TENSIONER-ASSY (Ref # 12048)     | 12048-0052  | 1        |
| GUIDE-CHAIN,RR (Ref # 12053)     | 12053-0126  | 1        |
| GUIDE-CHAIN,FR (Ref # 12053A)    | 12053-0127  | 1        |
| PLATE-POSITION (Ref # 14014)     | 14014-1154  | 1        |
| WASHER-PLAIN,6MM (Ref # 411)     | 411AA0600   | 1        |
| CAMSHAFT-COMP (Ref # 49118)      | 49118-0893  | 1        |
| O RING,10MM (Ref # 670)          | 670D2010    | 1        |
| O RING,21MM (Ref # 670A)         | 670D2021    | 1        |
| CHAIN,CAM (Ref # 92057)          | 92057-0691  | 1        |
| ROLLER (Ref # 92122)             | 92122-0011  | 1        |
| BOLT,8X23 (Ref # 92153)          | 92153-1156  | 1        |
| BOLT,6X26.5 (Ref # 92153A)       | 92153-1157  | 1        |
| BOLT (Ref # 92154)               | 92154-0281  | 1        |
| BOLT,FLANGED,6X25 (Ref # 92154A) | 92154-1196  | 2        |
| SCREW,6X14 (Ref # 92172)         | 92172-1055  | 2        |