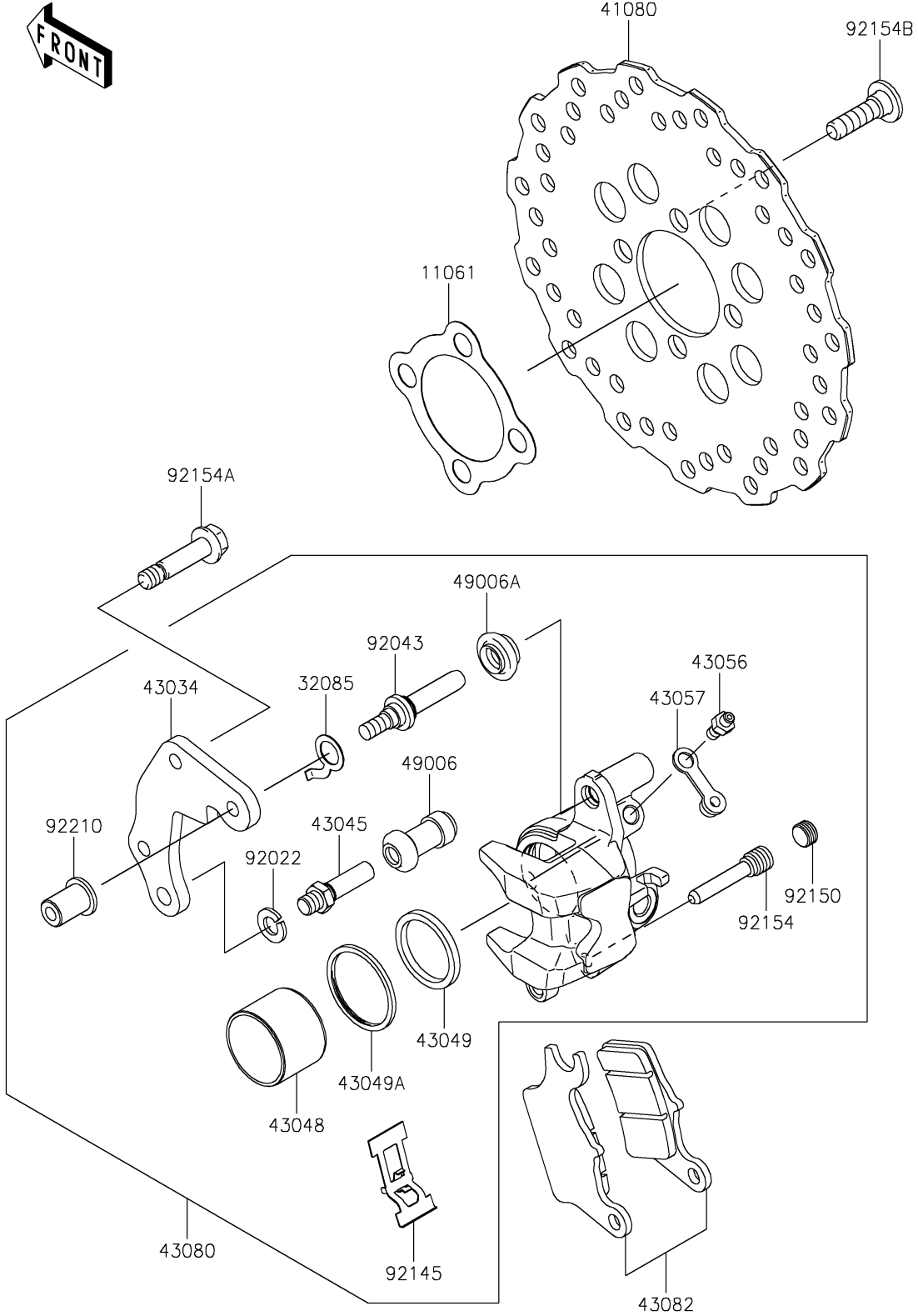


2018 Z125 PRO PARTS DIAGRAM

Front Brake

F2292



2018 Z125 PRO PARTS LIST

Front Brake

| ITEM NAME | PART NUMBER | QUANTITY |
|---|---------------|----------|
| GASKET,BRAKE DISC (Ref # 11061) | 11061-0006 | 1 |
| STOPPER (Ref # 32085) | 32085-0737 | 1 |
| DISC,FR (Ref # 41080) | 41080-0645 | 1 |
| HOLDER-BRAKE (Ref # 43034) | 43034-0119 | 1 |
| SHAFT-CALIPER (Ref # 43045) | 43045-1010 | 1 |
| PISTON-CALIPER (Ref # 43048) | 43048-0022 | 1 |
| PACKING,PISTON SEAL (Ref # 43049) | 43049-1023 | 1 |
| PACKING,PISTON SEAL (Ref # 43049A) | 43049-1024 | 1 |
| BREATHER-BRAKE (Ref # 43056) | 43056-0004 | 1 |
| CAP-BREATHER (Ref # 43057) | 43057-1001 | 1 |
| CALIPER-SUB-ASSY,FR,BLACK (Ref # 43080) | 43080-0159-DJ | 1 |
| PAD-ASSY-BRAKE (Ref # 43082) | 43082-0134 | 1 |
| BOOT,CALIPER (Ref # 49006) | 49006-1088 | 1 |
| BOOT,CALIPER (Ref # 49006A) | 49006-1242 | 1 |
| WASHER,WAVE (Ref # 92022) | 92022-1373 | 1 |
| PIN,8X17 (Ref # 92043) | 92043-0757 | 1 |
| SPRING (Ref # 92145) | 92145-0939 | 1 |
| BOLT,PLUG (Ref # 92150) | 92150-1692 | 1 |
| BOLT (Ref # 92154) | 92154-1120 | 1 |
| BOLT,FLANGED,8X36 (Ref # 92154A) | 92154-1260 | 2 |
| BOLT,SOCKET,8X30 (Ref # 92154B) | 92154-1865 | 4 |
| NUT (Ref # 92210) | 92210-0615 | 1 |