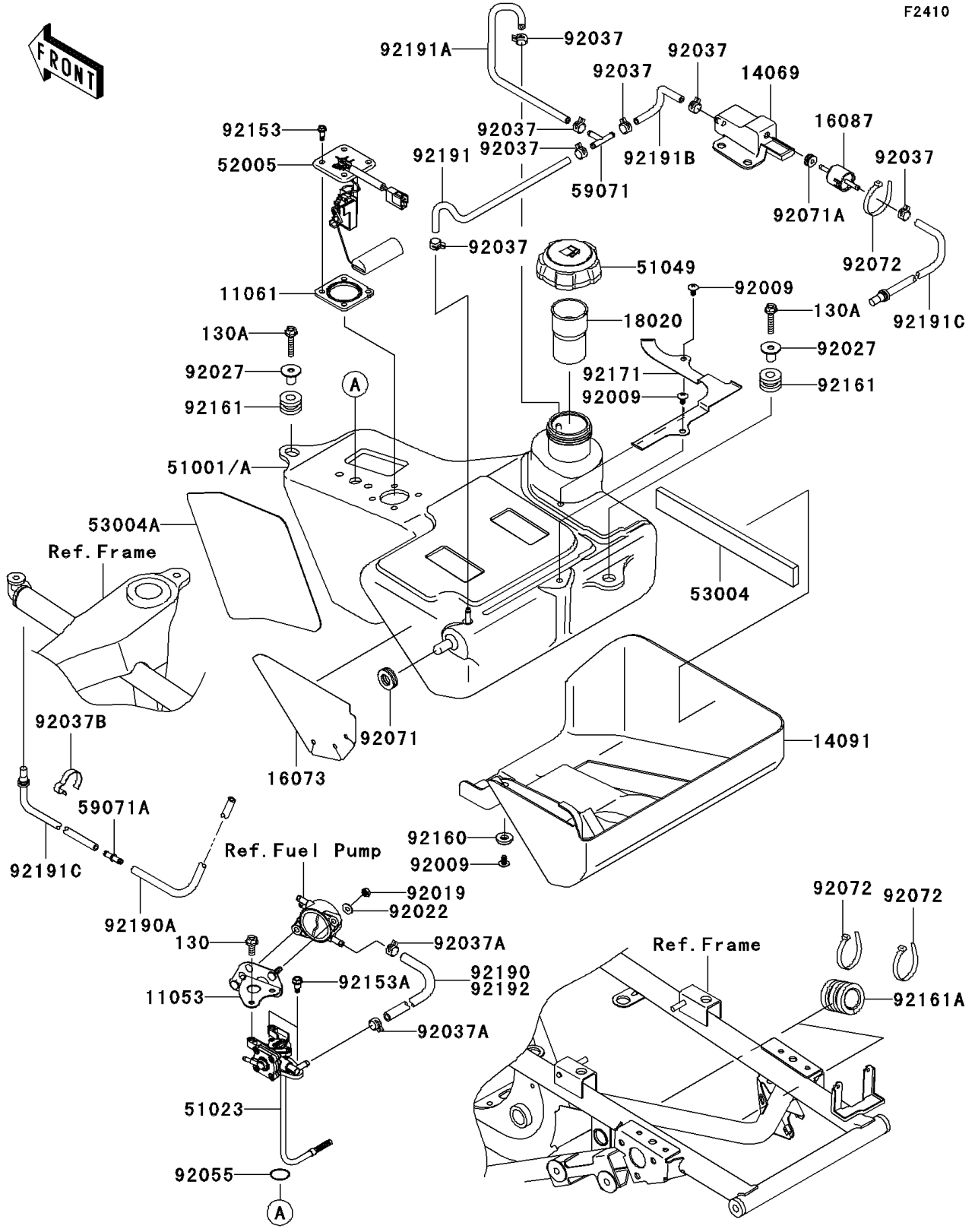


# 2009 Brute Force 650 4x4 Hardwoods Green HD PARTS DIAGRAM

Fuel Tank

F2410



## 2009 Brute Force 650 4x4 Hardwoods Green HD PARTS LIST

### Fuel Tank

ITEM NAME	PART NUMBER	QUANTITY
BOLT-FLANGED,6X16 (Ref # 130)	130BA0616	2
BRACKET,FUEL PUMP (Ref # 11053)	11053-1639	1
GASKET,FUEL GAUGE (Ref # 11061)	11061-0071	1
BREATHER,TANK (Ref # 14069)	14069-1069	1
COVER,FUEL TANK (Ref # 14091)	14091-0405	1
INSULATOR,FUEL TANK COVER (Ref # 16073)	16073-0022	1
VALVE-CHECK (Ref # 16087)	16087-0003	1
BAFFLE,FUEL TANK CAP (Ref # 18020)	18020-1278	1
TANK-COMP-FUEL (Ref # 51001A)	51001-0197	1
TAP-ASSY,FUEL (Ref # 51023)	51023-0013	1
CAP-TANK,FUEL (Ref # 51049)	51049-0001	1
GAUGE,FUEL (Ref # 52005)	52005-0016	1
MAT,FUEL TANK COVER (Ref # 53004)	53004-1161	1
MAT,FUEL TANK (Ref # 53004A)	53004-1165	1
JOINT (Ref # 59071)	59071-3705	1
JOINT (Ref # 59071A)	59071-3717	1
SCREW,6X12 (Ref # 92009)	92009-1480	3
NUT,LOCK,6MM (Ref # 92019)	92019-008	2
WASHER,6.2X15.0X1.2 (Ref # 92022)	92022-2373	2
COLLAR,L=16.1 (Ref # 92027)	92027-1847	2
CLAMP,TUBE (Ref # 92037)	92037-1461	7
CLAMP,TUBE (Ref # 92037A)	92037-1505	2
CLAMP,HOSE (Ref # 92037B)	92037-1552	1
RING-O,FUEL TAP (Ref # 92055)	92055-0081	1
GROMMET,AIR SUCTION VALVE (Ref # 92071)	92071-1249	1
GROMMET (Ref # 92071A)	92071-1266	1
BAND,L=188 (Ref # 92072)	92072-1239	5
BOLT,FLANGED,5MM (Ref # 92153)	92153-0361	4
BOLT,6MM (Ref # 92153A)	92153-0824	2

## 2009 Brute Force 650 4x4 Hardwoods Green HD PARTS LIST

### Fuel Tank

ITEM NAME	PART NUMBER	QUANTITY
DAMPER (Ref # 92160)	92160-1017	1
DAMPER (Ref # 92161)	92161-0106	2
DAMPER,FUEL TANK,RR (Ref # 92161A)	92161-1111	2
CLAMP,TUBE (Ref # 92171)	92171-0495	1
TUBE,5X9X530 (Ref # 92190A)	92190-1256	1
TUBE,TANK-FRONT (Ref # 92191)	92191-1639	1
TUBE,TANK-REAR (Ref # 92191A)	92191-1640	1
TUBE,5X9X160 (Ref # 92191B)	92191-1641	1
TUBE,TANK BREATHER (Ref # 92191C)	92191-1666	2
TUBE,5.8X10.8X140 (Ref # 92192)	92192-0491	1
BOLT-FLANGED,6X30 (Ref # 130A)	130BA0630	2