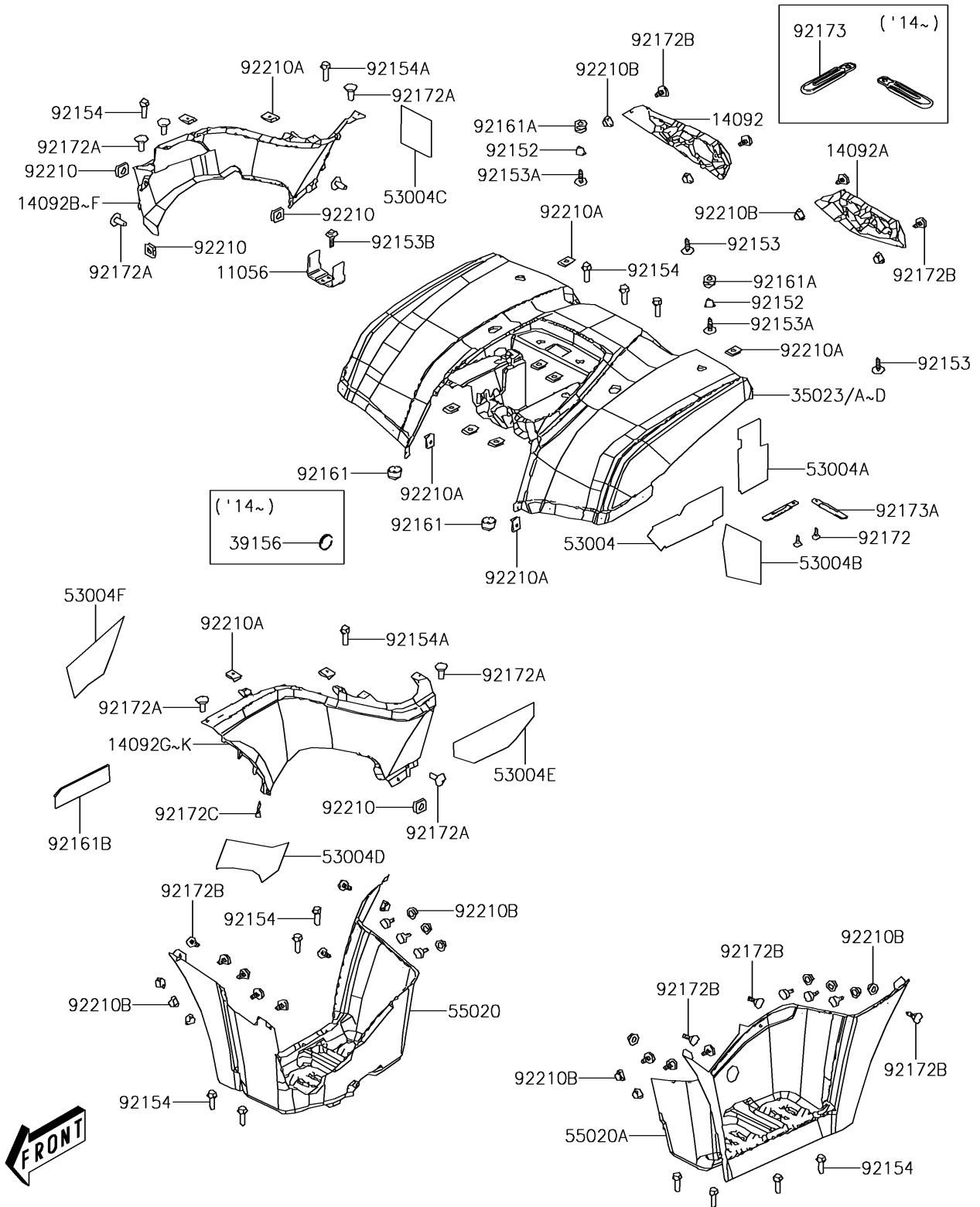


2013 BRUTE FORCE® 300 PARTS DIAGRAM

Rear Fender(s)

F2172



2013 BRUTE FORCE® 300 PARTS LIST

Rear Fender(s)

| ITEM NAME | PART NUMBER | QUANTITY |
|---|----------------|----------|
| BRACKET,IGNITION SWITCH (Ref # 11056) | 11056-Y004 | 1 |
| COVER,TAIL TAMP,RH,S.BLACK (Ref # 14092) | 14092-Y013-933 | 1 |
| COVER,TAIL TAMP,LH,S.BLACK (Ref # 14092A) | 14092-Y014-933 | 1 |
| COVER,SIDE,RH,F.RED (Ref # 14092E) | 14092-Y015-947 | 1 |
| COVER,SIDE,LH,F.RED (Ref # 14092J) | 14092-Y016-947 | 1 |
| FENDER-REAR,F.RED (Ref # 35023C) | 35023-Y002-947 | 1 |
| MAT,LH,LWR (Ref # 53004) | 53004-Y001 | 1 |
| MAT,LH,UPP (Ref # 53004A) | 53004-Y002 | 1 |
| MAT,RR (Ref # 53004B) | 53004-Y003 | 1 |
| MAT,RR (Ref # 53004C) | 53004-Y004 | 1 |
| MAT,LH (Ref # 53004D) | 53004-Y005 | 1 |
| MAT,LH (Ref # 53004E) | 53004-Y006 | 1 |
| MAT,FRONT,LH (Ref # 53004F) | 53004-Y007 | 1 |
| GUARD,FOOTREST,RH,S.BLACK (Ref # 55020) | 55020-Y005-933 | 1 |
| GUARD,FOOTREST,LH,S.BLACK (Ref # 55020A) | 55020-Y006-933 | 1 |
| COLLAR (Ref # 92152) | 92152-Y018 | 2 |
| BOLT,5X16 (Ref # 92153) | 92153-Y013 | 2 |
| BOLT,6X20 (Ref # 92153A) | 92153-Y019 | 2 |
| BOLT,FLANGED,5X12 (Ref # 92153B) | 92153-1991 | 1 |
| BOLT,FLANGE,6MM (Ref # 92154) | 92154-Y023 | 12 |
| BOLT,6X16 (Ref # 92154A) | 92154-Y054 | 2 |
| DAMPER (Ref # 92161) | 92161-Y005 | 2 |
| DAMPER (Ref # 92161A) | 92161-Y011 | 2 |
| DAMPER,FUEL TANK GUARD (Ref # 92161B) | 92161-Y019 | 1 |
| SCREW,4X12 (Ref # 92172) | 92172-Y019 | 2 |
| SCREW,5X16 (Ref # 92172A) | 92172-Y039 | 8 |
| SCREW,6X20 (Ref # 92172B) | 92172-Y041 | 23 |
| SCREW,5MM (Ref # 92172C) | 92172-Y043 | 1 |
| CLAMP,2X70 (Ref # 92173A) | 92173-Y011 | 2 |

2013 BRUTE FORCE® 300 PARTS LIST

Rear Fender(s)

| ITEM NAME | PART NUMBER | QUANTITY |
|------------------------|-------------|----------|
| NUT,6MM (Ref # 92210) | 92210-Y011 | 4 |
| NUT,5MM (Ref # 92210A) | 92210-Y016 | 13 |
| NUT (Ref # 92210B) | 92210-Y031 | 18 |