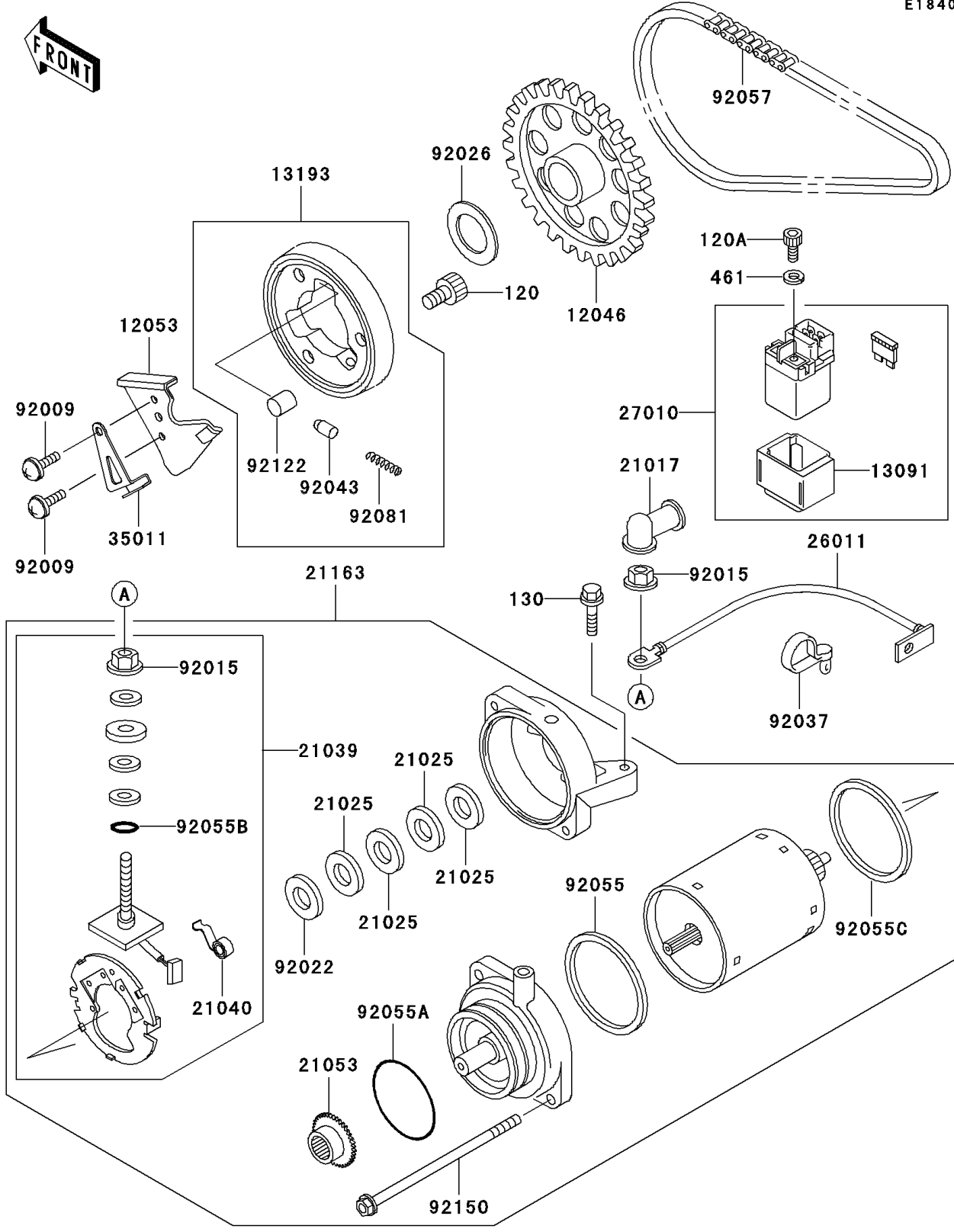


# 2009 Vulcan® 500 LTD PARTS DIAGRAM

Starter Motor

E1840



## 2009 Vulcan® 500 LTD PARTS LIST

### Starter Motor

ITEM NAME	PART NUMBER	QUANTITY
BOLT-SOCKET,8X16 (Ref # 120)	120CA0816	3
BOLT-SOCKET,5X10 (Ref # 120A)	120CB0510	2
BOLT-FLANGED,6X25 (Ref # 130)	130BD0625	2
WASHER-SPRING,5MM,BLACK (Ref # 461)	461DB0500	2
SPROCKET,ONEWAY CLUTCH,46T (Ref # 12046)	12046-1072	1
GUIDE-CHAIN (Ref # 12053)	12053-1214	1
HOLDER,SWITCH (Ref # 13091)	13091-1883	1
CLUTCH-ASSY-ONEWAY (Ref # 13193)	13193-1060	1
GROMMET,STARTER TERMINAL (Ref # 21017)	21017-017	1
WASHER,9.1X18X0.2 (Ref # 21025)	21025-011	4
BRUSH,CARBON (Ref # 21039)	21039-1062	1
SPRING-BRUSH (Ref # 21040)	21040-1057	2
SPROCKET-ASSY (Ref # 21053)	21053-1057	1
STARTER-ELECTRIC (Ref # 21163)	21163-1274	1
WIRE-LEAD,STARTER MOTOR (Ref # 26011)	26011-1636	1
SWITCH,MAGNETIC (Ref # 27010)	27010-1347	1
STAY,CHAIN GUIDE (Ref # 35011)	35011-1792	1
SCREW (Ref # 92009)	92009-1765	2
NUT,STARTER MOTOR (Ref # 92015)	92015-1476	2
WASHER,9.1X18X0.8 (Ref # 92022)	92022-1132	1
SPACER,25.2X40X1.0 (Ref # 92026)	92026-1285	1
CLAMP,SPEED,L=58 (Ref # 92037)	92037-1163	1
PIN (Ref # 92043)	92043-087	3
RING-O,64MM (Ref # 92055)	92055-1086	1
RING-O,42.8MM (Ref # 92055A)	92055-1313	1
RING-O,4.5X2.0 (Ref # 92055B)	92055-1370	1
RING-O,STARTER MOTOR (Ref # 92055C)	92055-1381	1
CHAIN,STARTER,BF05MX64L (Ref # 92057)	92057-1197	1
SPRING (Ref # 92081)	92081-110	3

## 2009 Vulcan® 500 LTD PARTS LIST

### Starter Motor

ITEM NAME	PART NUMBER	QUANTITY
ROLLER,15X13 (Ref # 92122)	92122-004	3
BOLT,STARTER MOTOR (Ref # 92150)	92150-1138	2