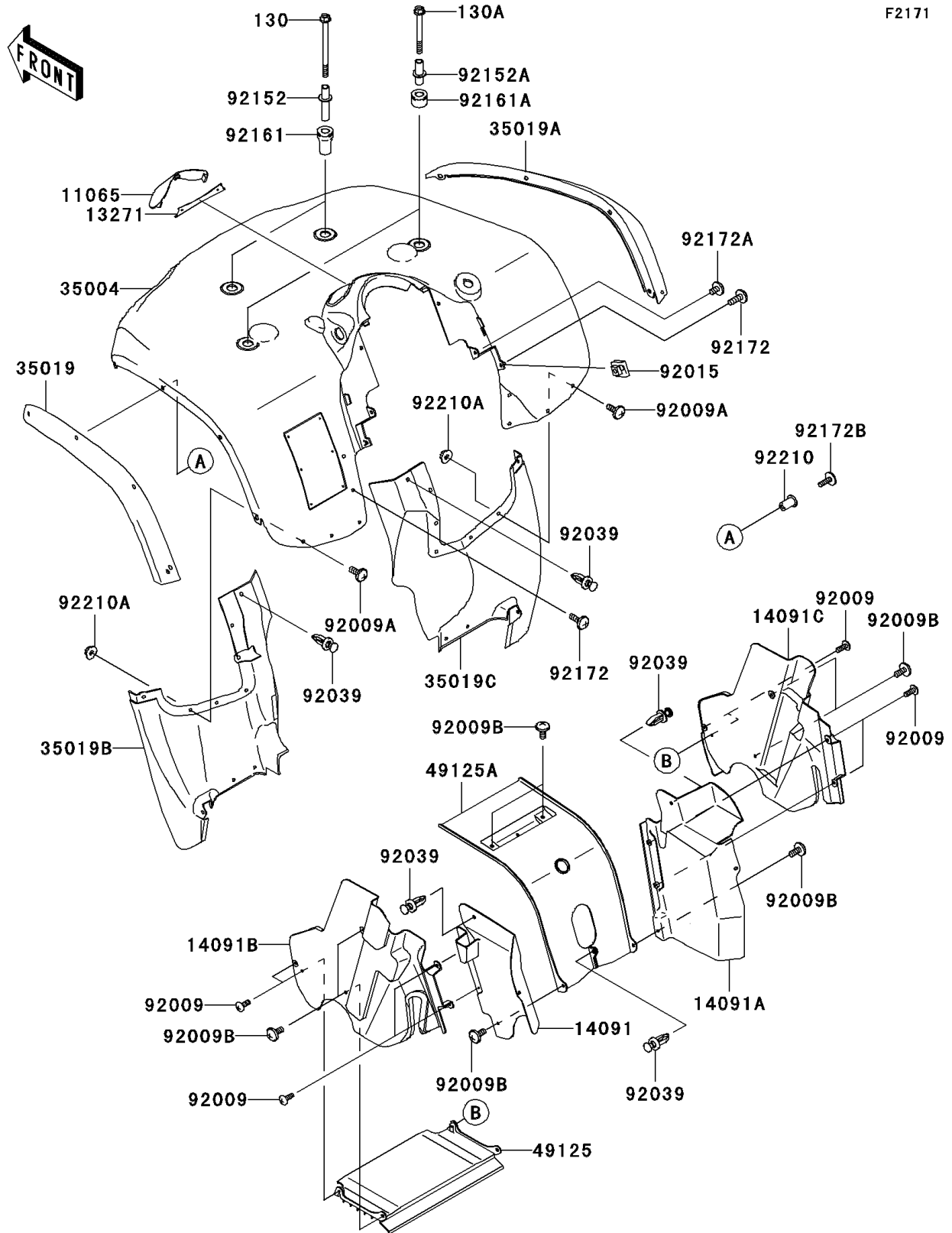


2004 Prairie 700 4x4 Hardwoods Green HD PARTS DIAGRAM

Front Fender(s)

F2171



2004 Prairie 700 4x4 Hardwoods Green HD PARTS LIST

Front Fender(s)

ITEM NAME	PART NUMBER	QUANTITY
BOLT-FLANGED,8X105 (Ref # 130)	130S08105	2
BOLT-FLANGED,8X75 (Ref # 130A)	130S0875	2
CAP,FR FENDER,C.H.GREEN (Ref # 11065)	11065-1258-374	1
PLATE,FR FENDER CAP (Ref # 13271)	13271-1640	1
COVER,SIDE,RR,LH (Ref # 14091)	14091-1282	1
COVER,SIDE,RR,RH (Ref # 14091A)	14091-1283	1
COVER,SIDE,FR,LH (Ref # 14091B)	14091-1428	1
COVER,SIDE,FR,RH (Ref # 14091C)	14091-1429	1
FENDER-FRONT,C.H.GREEN (Ref # 35004)	35004-1470-374	1
FLAP,FR,SIDE,LH,F.BLACK (Ref # 35019)	35019-1365-6Z	1
FLAP,FR,SIDE,RH,F.BLACK (Ref # 35019A)	35019-1366-6Z	1
FLAP,FR,RR,LH,F.BLACK (Ref # 35019B)	35019-1391-6Z	1
FLAP,FR,RR,RH,F.BLACK (Ref # 35019C)	35019-1392-6Z	1
SHROUD,FR,LWR (Ref # 49125)	49125-0006	1
SHROUD,FR,UPP (Ref # 49125A)	49125-1081	1
SCREW,TAPPING,5X14 (Ref # 92009)	92009-1197	8
SCREW,6X16 (Ref # 92009A)	92009-1621	11
SCREW,6X14 (Ref # 92009B)	92009-1662	8
NUT,CLAMP,6MM (Ref # 92015)	92015-1678	2
RIVET (Ref # 92039)	92039-1229	5
COLLAR,L=90 (Ref # 92152)	92152-0025	2
COLLAR,L=60.7 (Ref # 92152A)	92152-0026	2
DAMPER,L=58.5 (Ref # 92161)	92161-0035	2
DAMPER,L=25.5 (Ref # 92161A)	92161-1166	2
SCREW,6X18 (Ref # 92172)	92172-0002	3
SCREW,6X10 (Ref # 92172A)	92172-0005	2
SCREW,5X18 (Ref # 92172B)	92172-1063	8
NUT,POP,5MM (Ref # 92210)	92210-0012	8
NUT,6MM (Ref # 92210A)	92210-1368	12