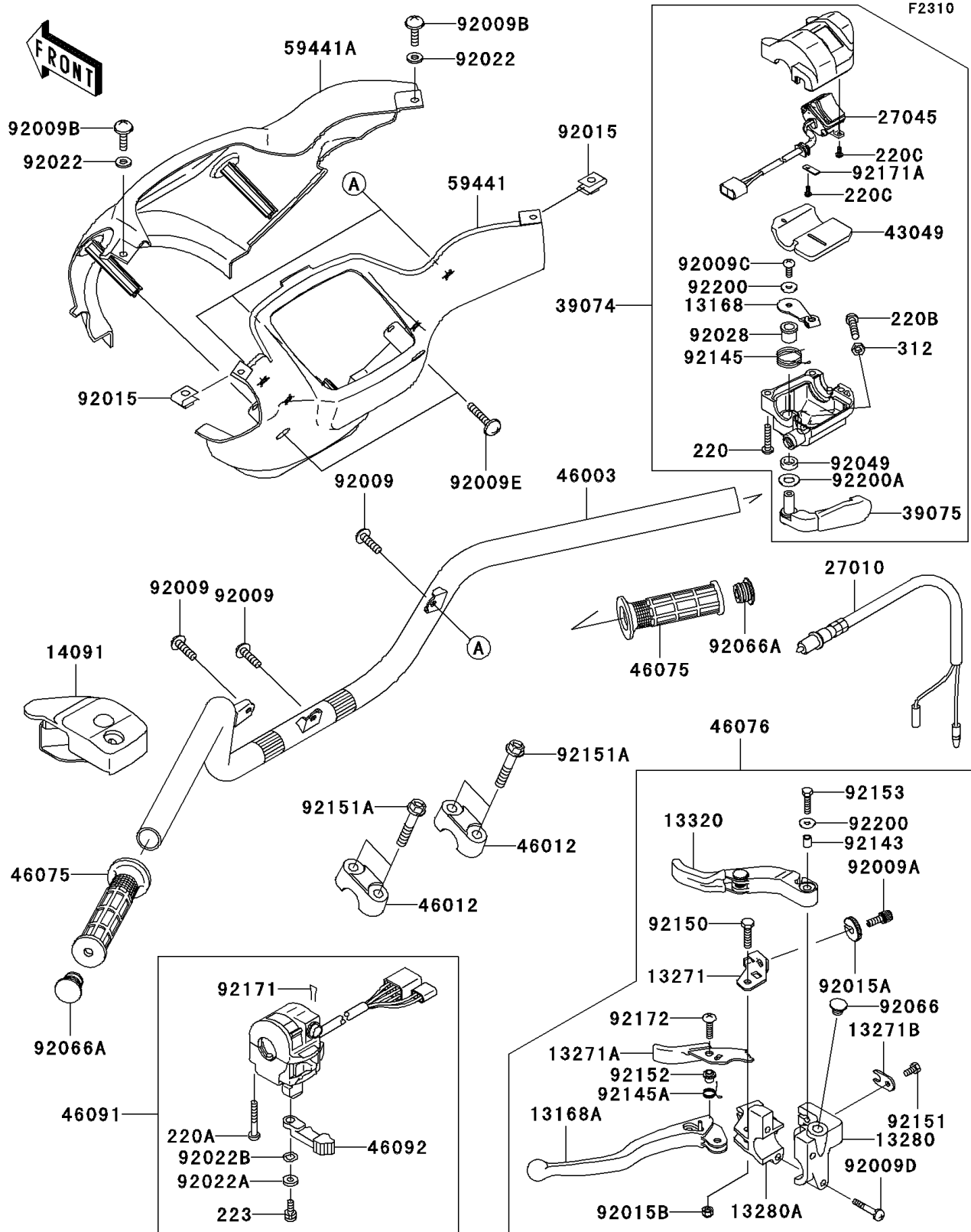


2004 Prairie 700 4x4 Hardwoods Green HD PARTS DIAGRAM

Handlebar



2004 Prairie 700 4x4 Hardwoods Green HD PARTS LIST

Handlebar

| ITEM NAME | PART NUMBER | QUANTITY |
|--|----------------|----------|
| LEVER (Ref # 13168) | 13168-1715 | 1 |
| LEVER,LH (Ref # 13168A) | 13168-1736 | 1 |
| PLATE,LOCK (Ref # 13271) | 13271-1259 | 1 |
| PLATE,LEVER LOCK (Ref # 13271A) | 13271-1635 | 1 |
| PLATE,WIRE OUTER STOPPER (Ref # 13271B) | 13271-1636 | 1 |
| HOLDER,DIFF LOCK LEVER (Ref # 13280) | 13280-1226 | 1 |
| HOLDER,LEVER,LH (Ref # 13280A) | 13280-1227 | 1 |
| LEVER-ASSY,DEFF LOCK (Ref # 13320) | 13320-1018 | 1 |
| COVER,DIFF LOCK LEVER (Ref # 14091) | 14091-1403 | 1 |
| SWITCH,BRAKE (Ref # 27010) | 27010-1294 | 1 |
| SWITCH-ASSY (Ref # 27045) | 27045-1081 | 1 |
| LEVER-ASSY-THROTTLE (Ref # 39074) | 39074-1062 | 1 |
| LEVER-THROTTLE (Ref # 39075) | 39075-1062 | 1 |
| PACKING (Ref # 43049) | 43049-1088 | 1 |
| HANDLE (Ref # 46003) | 46003-1580 | 1 |
| HOLDER-HANDLE (Ref # 46012) | 46012-1168 | 2 |
| GRIP,HANDLE (Ref # 46075) | 46075-7501 | 2 |
| LEVER-ASSY-GRIP,DEFF LOCK (Ref # 46076) | 46076-1238 | 1 |
| HOUSING-ASSY-CONTROL,LH (Ref # 46091) | 46091-1847 | 1 |
| LEVER-GRIP,CHOKE (Ref # 46092) | 46092-1217 | 1 |
| COVER-HANDLE,RR,C.H.GREEN (Ref # 59441) | 59441-1174-374 | 1 |
| COVER-HANDLE,FR,C.H.GREEN (Ref # 59441A) | 59441-1175-374 | 1 |
| SCREW,TAPPING,5X14 (Ref # 92009) | 92009-1197 | 3 |
| SCREW,CABLE ADJUST,8MM (Ref # 92009A) | 92009-1435 | 1 |
| SCREW,5X12 (Ref # 92009B) | 92009-1652 | 2 |
| SCREW (Ref # 92009C) | 92009-1959 | 1 |
| SCREW,6X30 (Ref # 92009D) | 92009-1961 | 2 |
| SCREW,TAPPING,5X30 (Ref # 92009E) | 92009-1965 | 2 |
| NUT,5MM (Ref # 92015) | 92015-1573 | 2 |

2004 Prairie 700 4x4 Hardwoods Green HD PARTS LIST

Handlebar

| ITEM NAME | PART NUMBER | QUANTITY |
|--|-------------|----------|
| NUT,CABLE ADJUST LOCK,8MM (Ref # 92015A) | 92015-1596 | 1 |
| NUT (Ref # 92015B) | 92015-1829 | 1 |
| WASHER,NYLON,5.3X11.5X1.5 (Ref # 92022) | 92022-1521 | 2 |
| WASHER,5MM (Ref # 92022A) | 92022-1837 | 1 |
| WASHER,WAVE,5MM (Ref # 92022B) | 92022-1838 | 1 |
| BUSHING (Ref # 92028) | 92028-1986 | 1 |
| SEAL-OIL (Ref # 92049) | 92049-1578 | 1 |
| PLUG,9.5X8,POLYETHYLENE (Ref # 92066) | 92066-1077 | 1 |
| PLUG (Ref # 92066A) | 92066-1550 | 2 |
| COLLAR (Ref # 92143) | 92143-1216 | 1 |
| SPRING (Ref # 92145) | 92145-1392 | 1 |
| SCREW-PAN-CROS,5X25 (Ref # 220) | 220C0525 | 3 |
| SCREW-PAN-CROS,5X35 (Ref # 220A) | 220C0535 | 2 |
| SCREW-PAN-CROS,6X25 (Ref # 220B) | 220C0625 | 1 |
| SCREW-PAN-CROSS,3X8 (Ref # 220C) | 220D0308 | 3 |
| SCREW-PAN-WS-CROS,5X12 (Ref # 223) | 223C0512 | 1 |
| NUT-HEX,6MM,BLACK (Ref # 312) | 312C0600 | 1 |
| SPRING (Ref # 92145A) | 92145-1429 | 1 |
| BOLT (Ref # 92150) | 92150-1420 | 1 |
| BOLT,5X10 (Ref # 92151) | 92151-1975 | 1 |
| BOLT,FLANGED,8X40 (Ref # 92151A) | 92151-2130 | 4 |
| COLLAR (Ref # 92152) | 92152-1176 | 1 |
| BOLT,5X20 (Ref # 92153) | 92153-1129 | 1 |
| CLAMP,CLIP (Ref # 92171) | 92171-1095 | 1 |
| CLAMP (Ref # 92171A) | 92171-1344 | 1 |
| SCREW,5X20 (Ref # 92172) | 92172-0078 | 1 |
| WASHER (Ref # 92200) | 92200-1558 | 2 |
| WASHER (Ref # 92200A) | 92200-1559 | 1 |