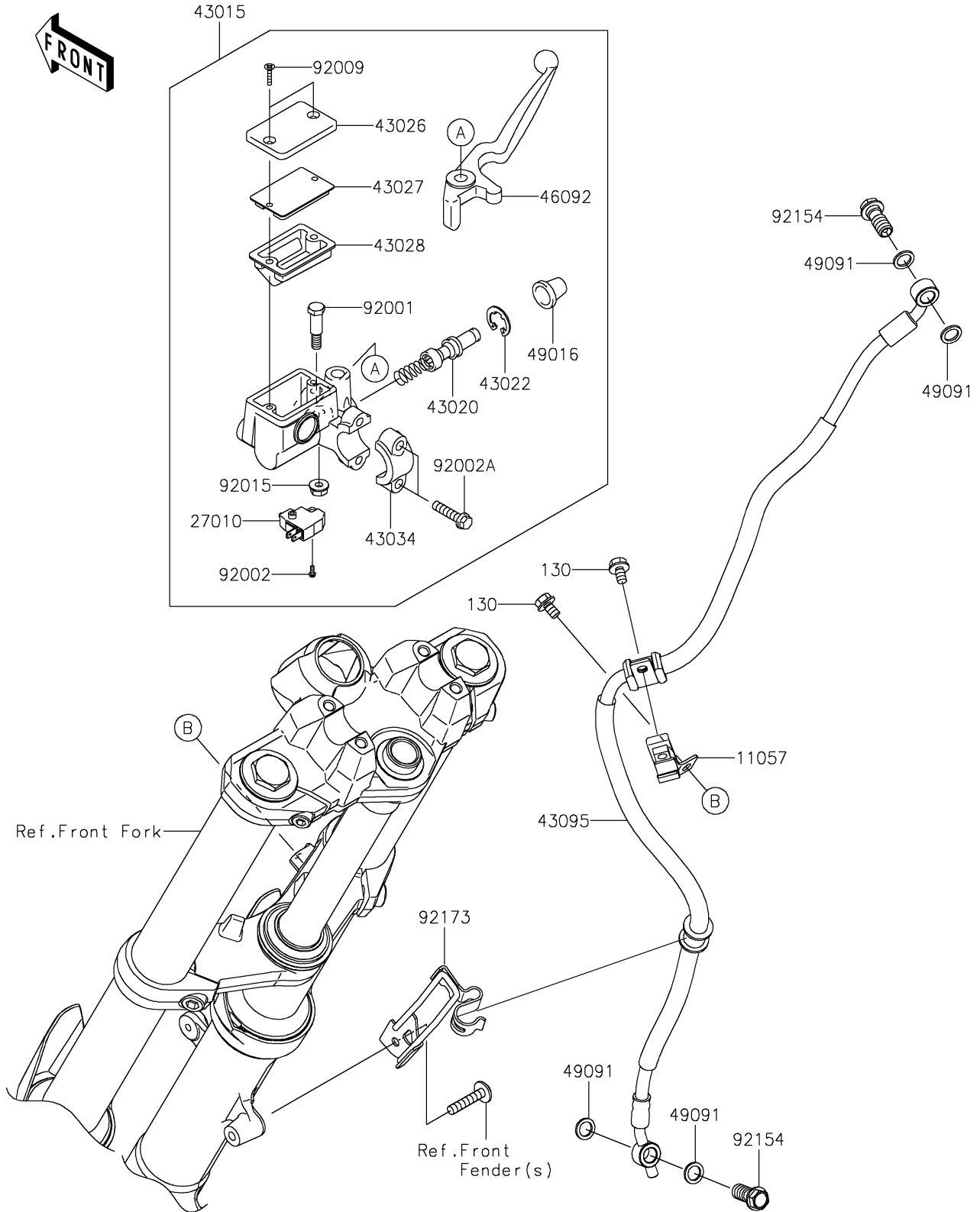


# 2019 VERSYS®-X 300 PARTS DIAGRAM

## Front Master Cylinder

F2291



## 2019 VERSYS®-X 300 PARTS LIST

### Front Master Cylinder

| ITEM NAME                                  | PART NUMBER | QUANTITY |
|--|-------------|----------|
| BRACKET (Ref # 11057)                      | 11057-0629  | 1        |
| BOLT-FLANGED,6X10 (Ref # 130)              | 130BA0610   | 2        |
| SWITCH,BRAKE (Ref # 27010)                 | 27010-0762  | 1        |
| CYLINDER-ASSY-MASTER,FR (Ref # 43015)      | 43015-0731  | 1        |
| PISTON-COMP-BRAKE (Ref # 43020)            | 43020-0022  | 1        |
| STOPPER-BRAKE,PISTON (Ref # 43022)         | 43022-1010  | 1        |
| CAP-BRAKE (Ref # 43026)                    | 43026-1082  | 1        |
| PLATE-DIAPHRAGM (Ref # 43027)              | 43027-1057  | 1        |
| DIAPHRAGM (Ref # 43028)                    | 43028-1061  | 1        |
| HOLDER-BRAKE,MASTER CYLINDER (Ref # 43034) | 43034-1016  | 1        |
| HOSE-BRAKE,FR,916MM (Ref # 43095)          | 43095-1445  | 1        |
| LEVER-GRIP,FRONT BRAKE (Ref # 46092)       | 46092-1203  | 1        |
| COVER-SEAL,MASTER CYLINDER (Ref # 49016)   | 49016-1044  | 1        |
| WASHER-SEAL,10.1X14.5X1.5 (Ref # 49091)    | 49091-0001  | 4        |
| BOLT,FRONT BRAKE LEVER (Ref # 92001)       | 92001-1728  | 1        |
| BOLT,SCREW,4X12 (Ref # 92002)              | 92002-1323  | 1        |
| BOLT (Ref # 92002A)                        | 92002-1894  | 2        |
| SCREW,4MM (Ref # 92009)                    | 92009-1458  | 2        |
| NUT,FLANGED,6MM,BLACK (Ref # 92015)        | 92015-1233  | 1        |
| BOLT,BANJO,10X23 (Ref # 92154)             | 92154-2560  | 2        |
| CLAMP,FORK OUTER TUBE (Ref # 92173)        | 92173-1654  | 1        |