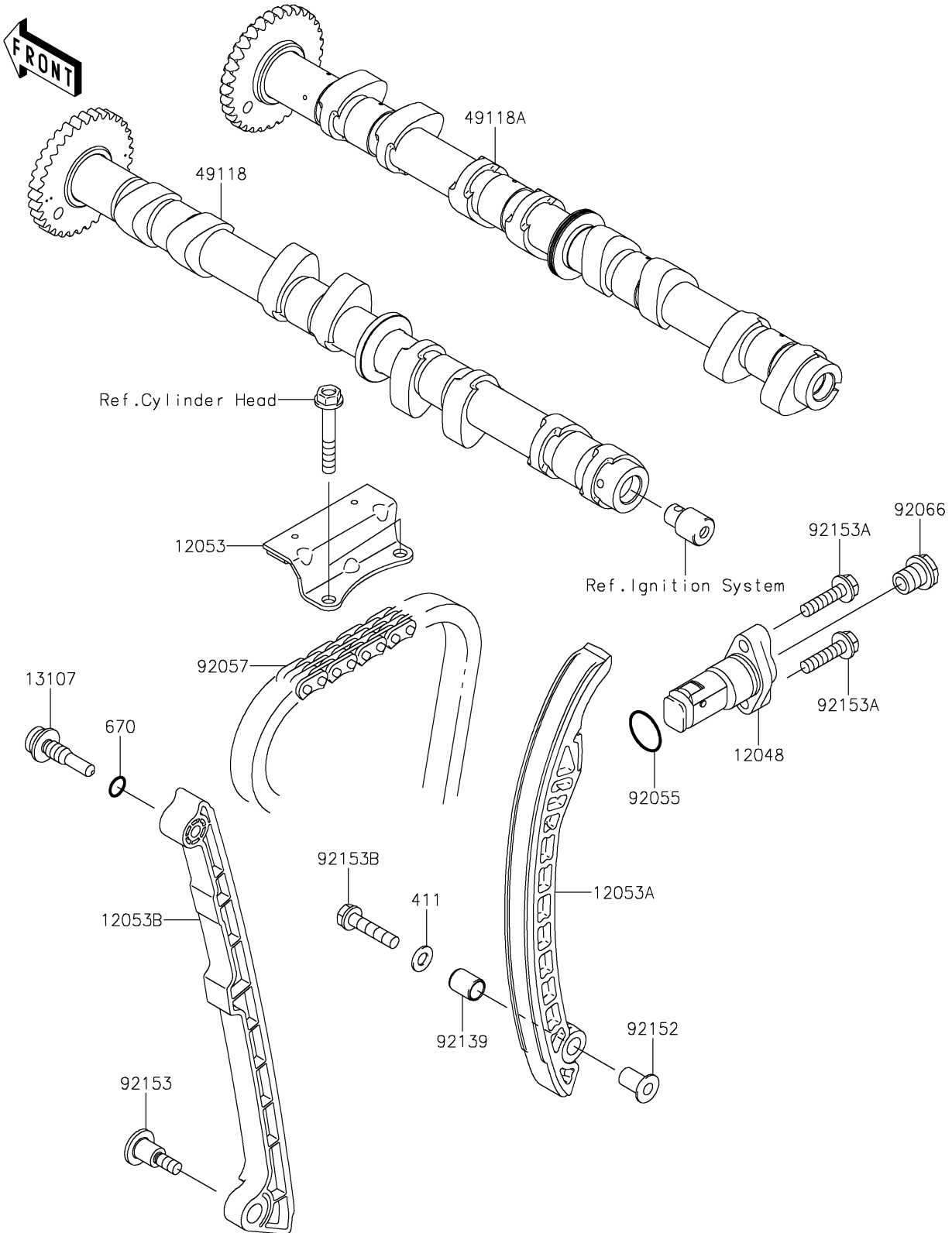


2020 JET SKI® ULTRA® 310X PARTS DIAGRAM

Camshaft(s)/Tensioner

E1230



2020 JET SKI® ULTRA® 310X PARTS LIST

Camshaft(s)/Tensioner

| ITEM NAME | PART NUMBER | QUANTITY |
|-------------------------------------|-------------|----------|
| TENSIONER-ASSY (Ref # 12048) | 12048-0081 | 1 |
| GUIDE-CHAIN,UPP (Ref # 12053) | 12053-1432 | 1 |
| GUIDE-CHAIN,RR (Ref # 12053A) | 12053-3710 | 1 |
| GUIDE-CHAIN,FR (Ref # 12053B) | 12053-3711 | 1 |
| SHAFT,CHAIN GUIDE (Ref # 13107) | 13107-0157 | 1 |
| WASHER-PLAIN,6MM (Ref # 411) | 411S0600 | 1 |
| CAMSHAFT-COMP,EXHAUST (Ref # 49118) | 49118-0959 | 1 |
| CAMSHAFT-COMP,INTAKE (Ref # 49118A) | 49118-0960 | 1 |
| O RING,9MM (Ref # 670) | 670D1509 | 1 |
| RING-O,18.8X1.9 (Ref # 92055) | 92055-086 | 1 |
| CHAIN,98XRH2020-138L (Ref # 92057) | 92057-3715 | 1 |
| PLUG (Ref # 92066) | 92066-3780 | 1 |
| BUSHING,9X11X13.9 (Ref # 92139) | 92139-0716 | 1 |
| COLLAR (Ref # 92152) | 92152-0981 | 1 |
| BOLT,SOCKET,6X24.5 (Ref # 92153) | 92153-1200 | 1 |
| BOLT,6X25 (Ref # 92153A) | 92153-3705 | 2 |
| BOLT,6X28 (Ref # 92153B) | 92153-3710 | 1 |