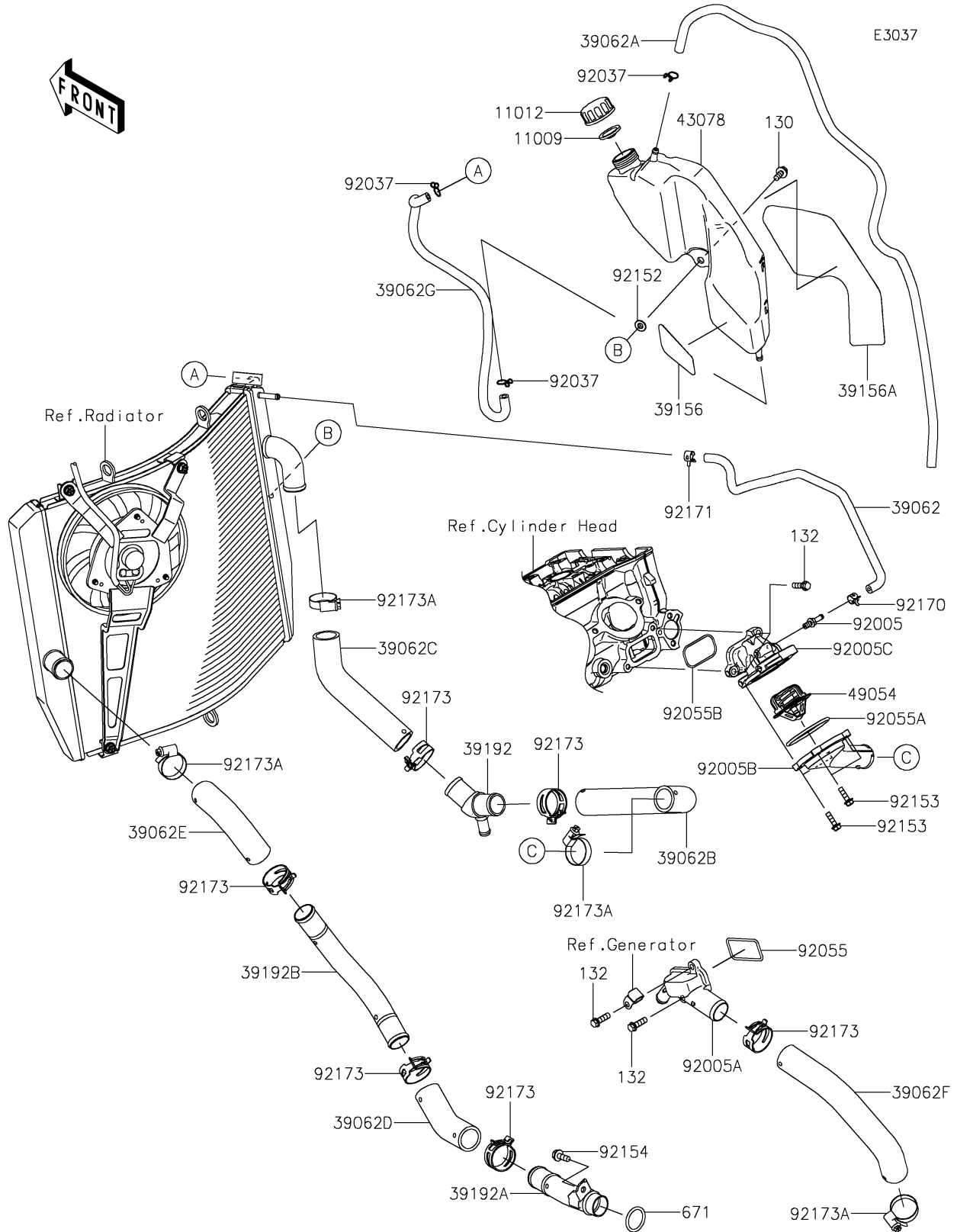


2020 NINJA® ZX™-10R ABS PARTS DIAGRAM

Water Pipe



2020 NINJA® ZX™ -10R ABS PARTS LIST

Water Pipe

| ITEM NAME | PART NUMBER | QUANTITY |
|---|-------------|----------|
| GASKET,RESERVOIR TANK CAP (Ref # 11009) | 11009-1145 | 1 |
| CAP (Ref # 11012) | 11012-1084 | 1 |
| BOLT-FLANGED,6X14 (Ref # 130) | 130BA0614 | 1 |
| BOLT-FLANGED-SMALL,6X20 (Ref # 132) | 132BC0620 | 4 |
| HOSE,THERMO CASE-RADIATOR (Ref # 39062) | 39062-0347 | 1 |
| HOSE-COOLING,OVER FLOW (Ref # 39062A) | 39062-0729 | 1 |
| HOSE,THERMO CAP-3WAY PIPE (Ref # 39062B) | 39062-0734 | 1 |
| HOSE,3WAY PIPE-RADIATOR (Ref # 39062C) | 39062-0735 | 1 |
| HOSE,PIPE(RAD.)-PIPE(W/PUMP) (Ref # 39062D) | 39062-0736 | 1 |
| HOSE,RADIATOR-PIPE(WATER PUMP) (Ref # 39062E) | 39062-0737 | 1 |
| HOSE,WATER PUMP-FITTING (Ref # 39062F) | 39062-0738 | 1 |
| HOSE-COOLING,RETURN (Ref # 39062G) | 39062-0778 | 1 |
| PAD (Ref # 39156) | 39156-1965 | 1 |
| PAD (Ref # 39156A) | 39156-1989 | 1 |
| PIPE,3WAY (Ref # 39192) | 39192-0614 | 1 |
| PIPE,TUBE(RADIATOR)-WATER PUMP (Ref # 39192A) | 39192-0617 | 1 |
| PIPE,TUBE(RADIATOR)-TUBE(PUMP) (Ref # 39192B) | 39192-0618 | 1 |
| RESERVOIR (Ref # 43078) | 43078-0581 | 1 |
| THERMOSTAT (Ref # 49054) | 49054-0004 | 1 |
| O RING,25MM (Ref # 671) | 671B2525 | 1 |
| FITTING (Ref # 92005) | 92005-0826 | 1 |
| FITTING (Ref # 92005A) | 92005-0837 | 1 |
| FITTING,THERMO CAP (Ref # 92005B) | 92005-0880 | 1 |
| FITTING,THERMO CASE (Ref # 92005C) | 92005-0901 | 1 |
| CLAMP,TUBE (Ref # 92037) | 92037-147 | 3 |
| RING-O (Ref # 92055) | 92055-0209 | 1 |
| RING-O,53.5X2.6 (Ref # 92055A) | 92055-0831 | 1 |
| RING-O,27.6X49.6X1.9 (Ref # 92055B) | 92055-0913 | 1 |
| COLLAR (Ref # 92152) | 92152-1414 | 1 |

2020 NINJA® ZX™ -10R ABS PARTS LIST

Water Pipe

| ITEM NAME | PART NUMBER | QUANTITY |
|---------------------------------------|-------------|----------|
| BOLT,FLANGED,5X18 (Ref # 92153) | 92153-1588 | 4 |
| BOLT,FLANGED-SMALL,6X16 (Ref # 92154) | 92154-1893 | 1 |
| CLAMP (Ref # 92170) | 92170-1493 | 1 |
| CLAMP (Ref # 92171) | 92171-0719 | 1 |
| CLAMP,34MM (Ref # 92173) | 92173-1360 | 6 |
| CLAMP (Ref # 92173A) | 92173-1548 | 4 |