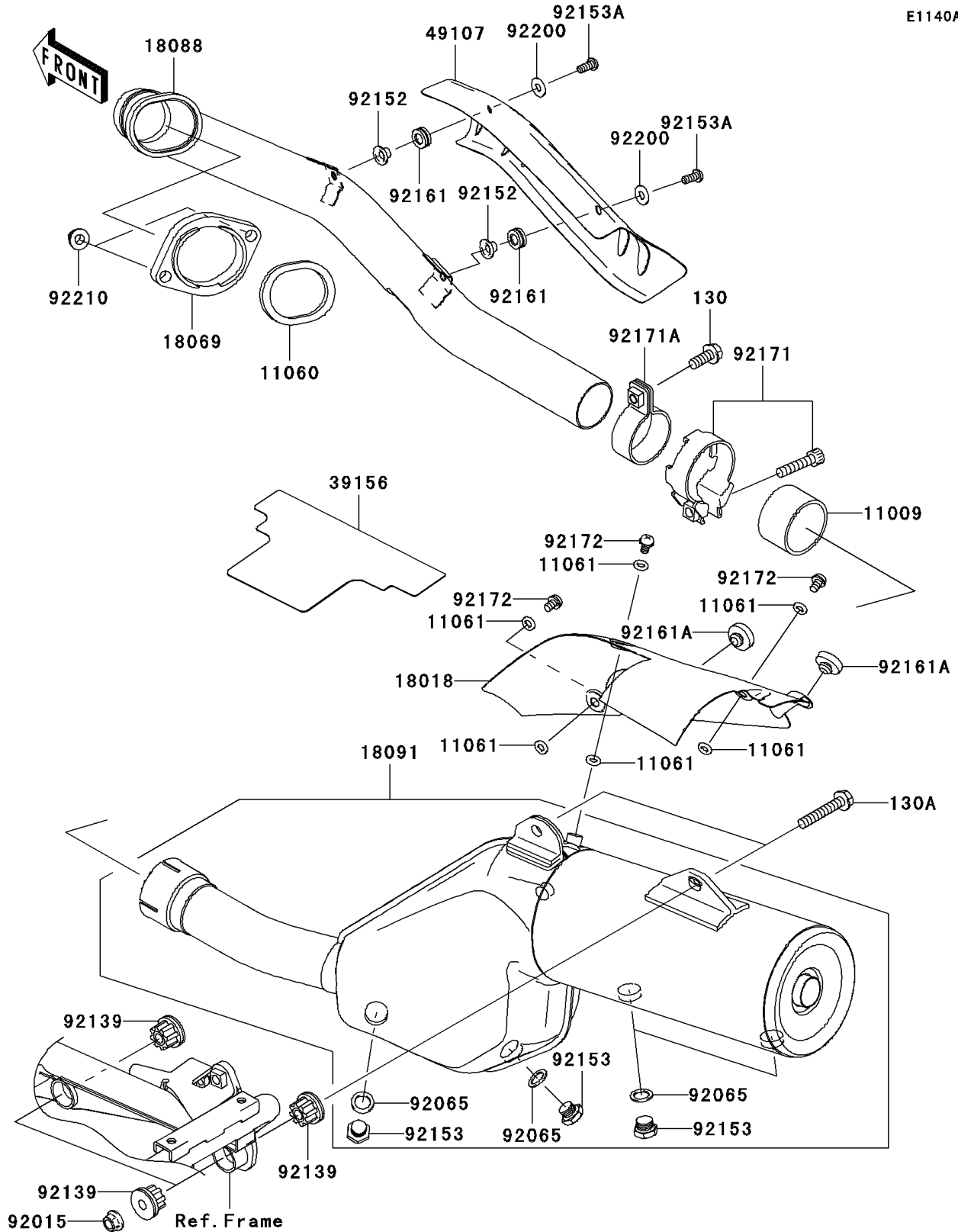


2010 KLR™ 650 PARTS DIAGRAM

Muffler(s)(EAF)

E1140A



2010 KLR™ 650 PARTS LIST

Muffler(s)(EAF)

ITEM NAME	PART NUMBER	QUANTITY
BOLT-FLANGED,8X20 (Ref # 130)	130BD0820	1
BOLT-FLANGED (Ref # 130A)	130CC0845	2
GASKET,EXHAUST PIPE CONNECTING (Ref # 11009)	11009-1666	1
GASKET,EXHAUST PIPE HOLDER (Ref # 11060)	11060-1108	1
GASKET,6.2X11.5X1.5 (Ref # 11061)	11061-0372	6
PLATE-HEAT GUARD (Ref # 18018)	18018-0006	1
HOLDER-EXHAUST PIPE (Ref # 18069)	18069-1063	1
PIPE-EXHAUST (Ref # 18088)	18088-0551	1
BODY-COMP-MUFFLER (Ref # 18091)	18091-0510	1
PAD (Ref # 39156)	39156-0264	1
COVER-EXHAUST PIPE (Ref # 49107)	49107-0112	1
NUT,8MM (Ref # 92015)	92015-1402	2
GASKET,12.5X18X1,DRAIN PLUG (Ref # 92065)	92065-073	4
BUSHING,MUFFLER (Ref # 92139)	92139-0288	4
COLLAR (Ref # 92152)	92152-0620	2
BOLT (Ref # 92153)	92153-1813	4
BOLT,SOCKET,6X14 (Ref # 92153A)	92153-1886	2
DAMPER (Ref # 92161)	92161-0306	2
DAMPER (Ref # 92161A)	92161-0336	2
CLAMP (Ref # 92171)	92171-0139	1
CLAMP,43MM (Ref # 92171A)	92171-0752	1
SCREW,6X10 (Ref # 92172)	92172-0097	3
WASHER,6.5X16X1.0 (Ref # 92200)	92200-3712	2
NUT,CAP,8MM (Ref # 92210)	92210-1132	2