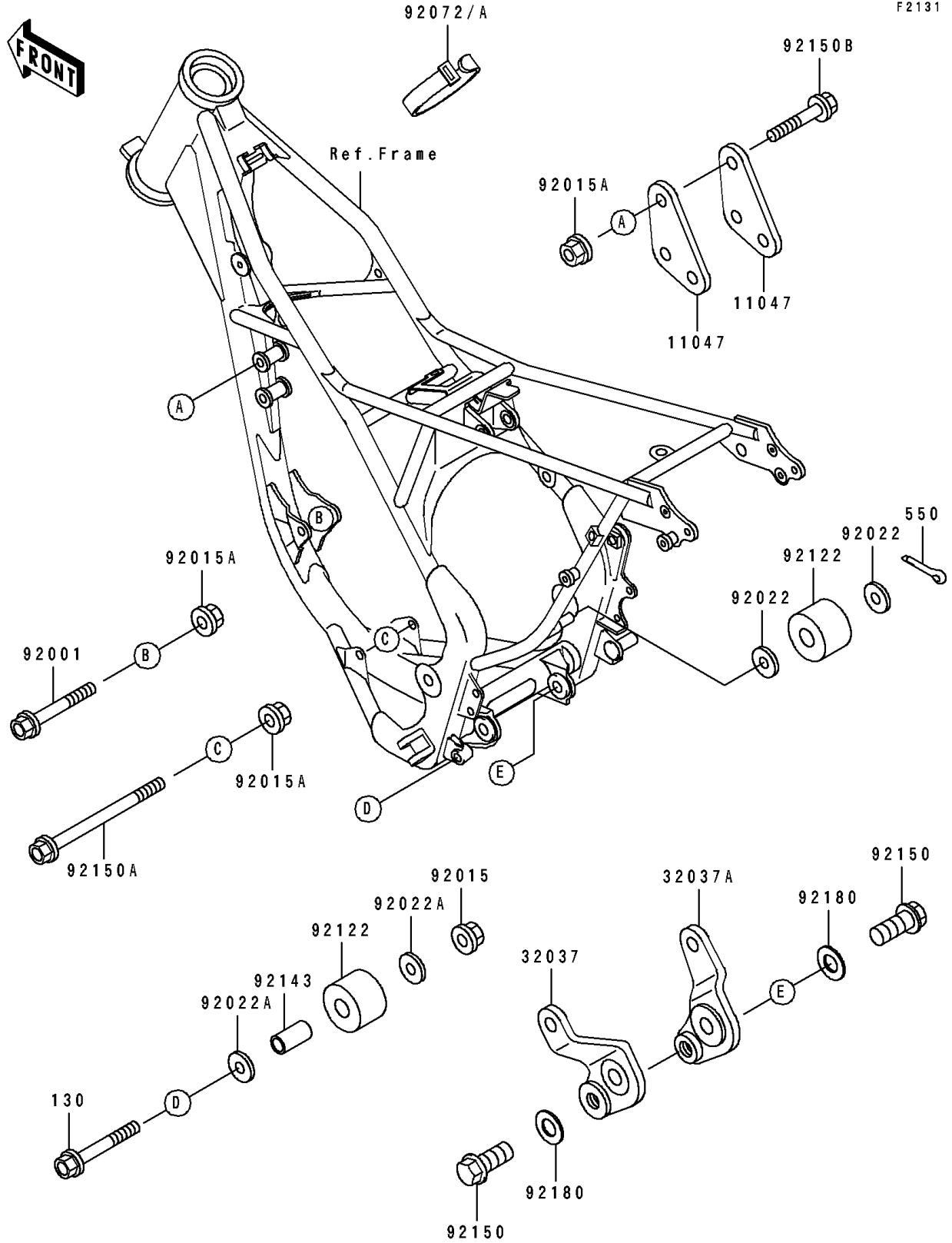


1996 KX100 PARTS DIAGRAM

Frame Fittings



1996 KX100 PARTS LIST

Frame Fittings

| ITEM NAME | PART NUMBER | QUANTITY |
|--------------------------------------|-------------|----------|
| BRACKET,ENGINE (Ref # 11047) | 11047-1099 | 2 |
| BRACKET-SHOCKABSORBER (Ref # 32037) | 32037-1552 | 1 |
| BRACKET-SHOCKABSORBER (Ref # 32037A) | 32037-1553 | 1 |
| BOLT,FLANGED,8X63 (Ref # 92001) | 92001-1006 | 1 |
| NUT,8MM (Ref # 92015) | 92015-1143 | 1 |
| NUT,8MM (Ref # 92015A) | 92015-1432 | 5 |
| WASHER (Ref # 92022) | 92022-107 | 2 |
| WASHER,8.5X20X1.6 (Ref # 92022A) | 92022-1561 | 2 |
| BAND,L=123 (Ref # 92072) | 92072-030 | 1 |
| BAND,L=149 (Ref # 92072A) | 92072-031 | 1 |
| ROLLER,CHAIN GUIDE (Ref # 92122) | 92122-1179 | 2 |
| COLLAR,9.5X12.7X25 (Ref # 92143) | 92143-1432 | 1 |
| BOLT,FLANGED,12X27 (Ref # 92150) | 92150-1359 | 2 |
| BOLT,FLANGED,8X105 (Ref # 92150A) | 92150-1482 | 1 |
| BOLT,FLANGED,8X45 (Ref # 92150B) | 92150-1487 | 3 |
| SHIM,12.5X24X0.5 (Ref # 92180) | 92180-1060 | 2 |
| BOLT-FLANGED,8X60 (Ref # 130) | 130G0860 | 1 |
| PIN-COTTER,2.5X15 (Ref # 550) | 550D2515 | 1 |