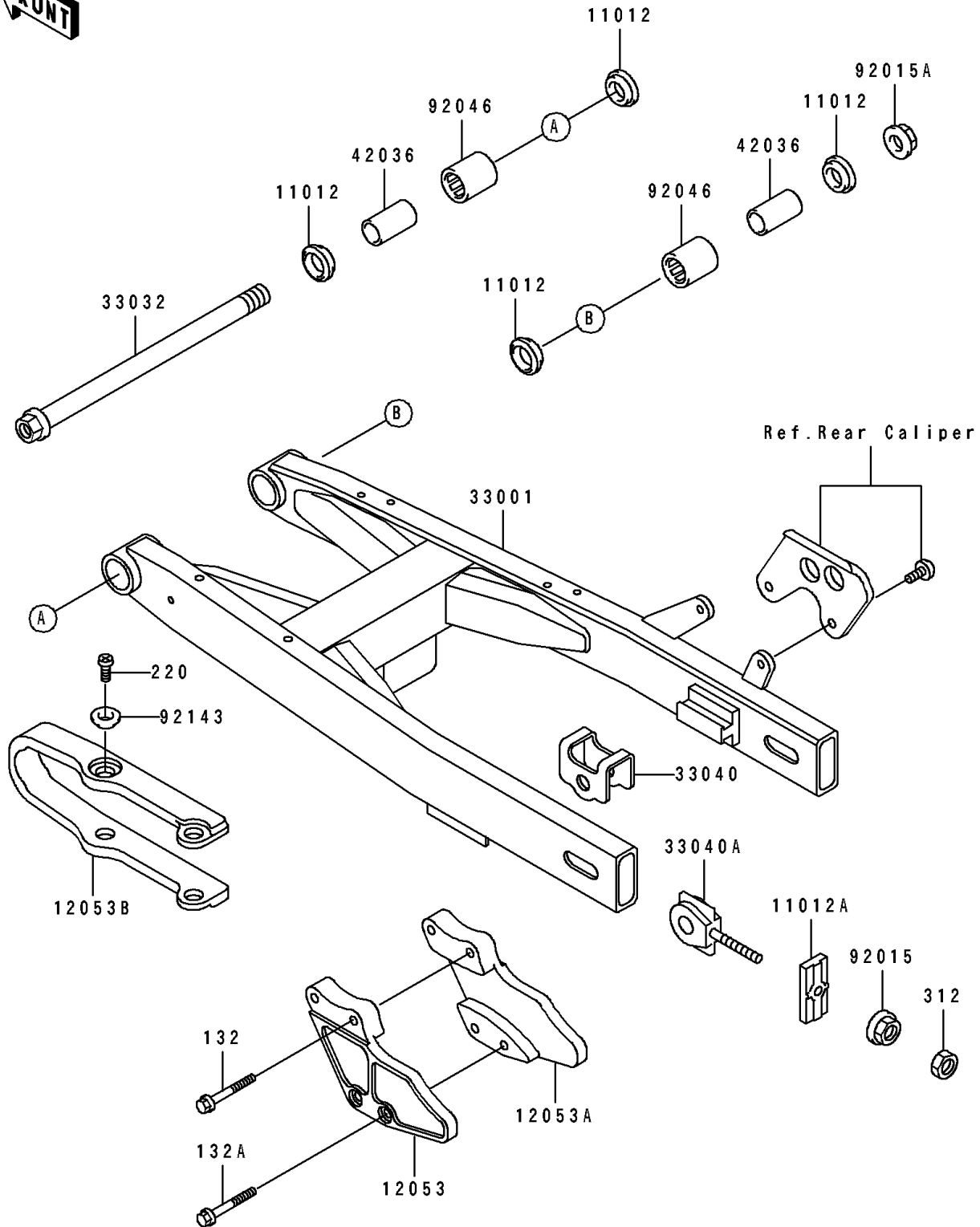


1997 KX100 PARTS DIAGRAM

Swingarm

F2141



1997 KX100 PARTS LIST

Swingarm

| ITEM NAME | PART NUMBER | QUANTITY |
|---|---------------|----------|
| CAP (Ref # 11012) | 11012-1263 | 4 |
| CAP,CHAIN ADJUSTER (Ref # 11012A) | 11012-1601 | 2 |
| GUIDE-CHAIN,RR,LH (Ref # 12053) | 12053-1203 | 1 |
| GUIDE-CHAIN,RR,RH (Ref # 12053A) | 12053-1204 | 1 |
| GUIDE-CHAIN,DRIVE,FR (Ref # 12053B) | 12053-1277 | 1 |
| ARM-COMP-SWING,SILVER NO.35 (Ref # 33001) | 33001-1392-TX | 1 |
| SHAFT-SWING ARM (Ref # 33032) | 33032-1161 | 1 |
| ADJUSTER-CHAIN,OUTSIDE (Ref # 33040) | 33040-1066 | 2 |
| ADJUSTER-CHAIN,INSIDE (Ref # 33040A) | 33040-1081 | 2 |
| SLEEVE,SWING ARM,L=34 (Ref # 42036) | 42036-1067 | 2 |
| NUT,FLANGED,6MM (Ref # 92015) | 92015-1078 | 2 |
| NUT,LOCK,12MM (Ref # 92015A) | 92015-1774 | 1 |
| BEARING-NEEDLE (Ref # 92046) | 92046-1046 | 2 |
| COLLAR (Ref # 92143) | 92143-1156 | 4 |
| BOLT-FLANGED-SMALL (Ref # 132) | 132G0640 | 2 |
| BOLT-FLANGED-SMALL (Ref # 132A) | 132G0645 | 2 |
| SCREW-PAN-CROS,6X8 (Ref # 220) | 220B0608 | 4 |
| NUT-HEX,6MM (Ref # 312) | 312B0600 | 2 |