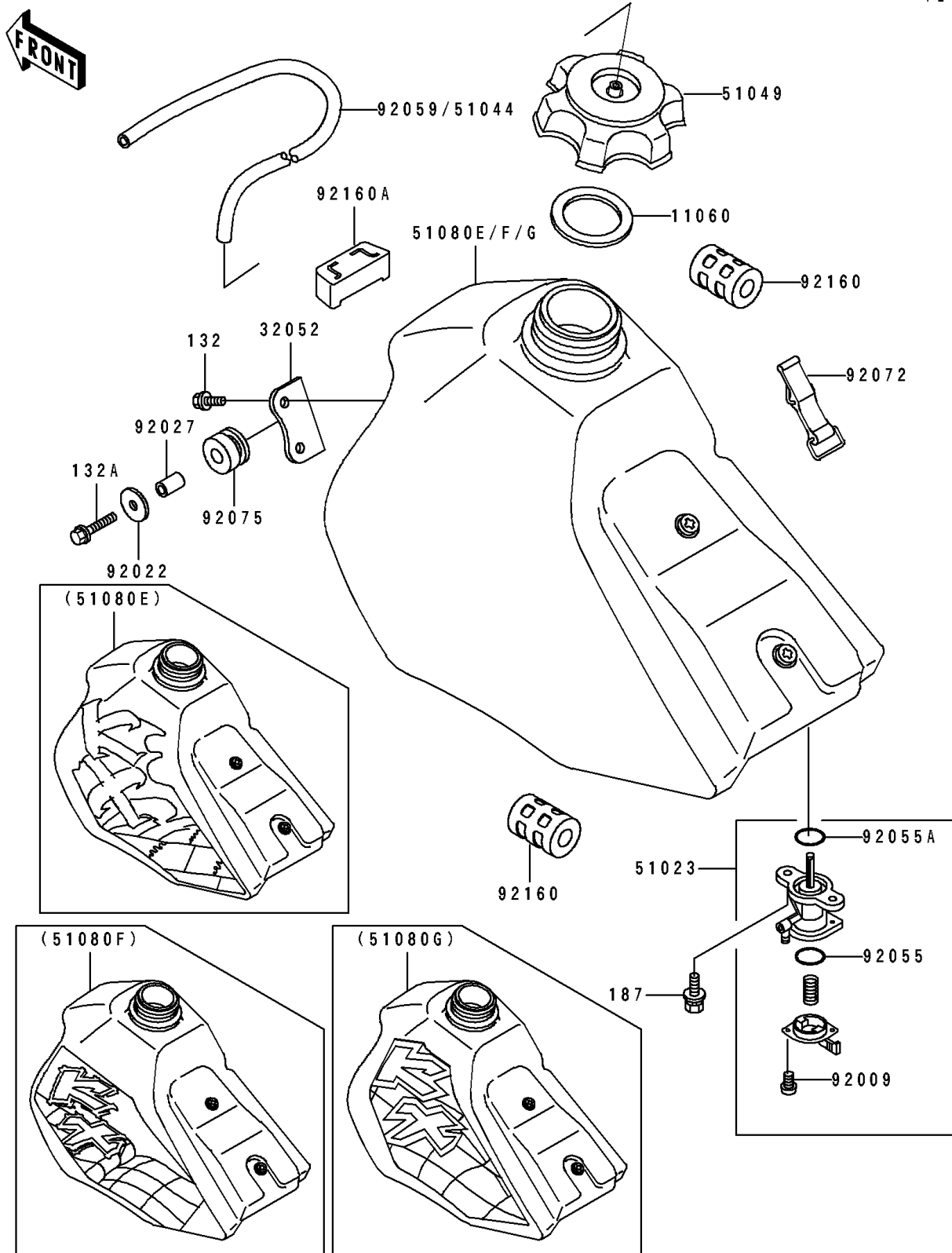


# 1996 KX100 PARTS DIAGRAM

Fuel Tank

F2410



# 1996 KX100 PARTS LIST

## Fuel Tank

| ITEM NAME                                | PART NUMBER   | QUANTITY |
|--|---------------|----------|
| GASKET,FUEL TANK CAP (Ref # 11060)       | 11060-1340    | 1        |
| BRACKET-TANK (Ref # 32052)               | 32052-1169    | 1        |
| TAP-ASSY,FUEL (Ref # 51023)              | 51023-1115    | 1        |
| CAP-TANK,FUEL (Ref # 51049)              | 51049-1108    | 1        |
| TANK-COMP-FUEL,J.S.VIOLET (Ref # 51080F) | 51080-5224-RE | 1        |
| SCREW,3X8 (Ref # 92009)                  | 92009-1386    | 2        |
| WASHER,6.5X24X2 (Ref # 92022)            | 92022-1690    | 1        |
| COLLAR,6.8X10X17 (Ref # 92027)           | 92027-1833    | 1        |
| RING-O,FUEL TAP LEVER (Ref # 92055)      | 92055-1299    | 1        |
| RING-O,FUEL TAP PACKING (Ref # 92055A)   | 92055-1300    | 1        |
| TUBE,5X9X350 (Ref # 92059)               | 92059-1265    | 1        |
| BAND,FUEL TANK (Ref # 92072)             | 92072-1229    | 1        |
| DAMPER (Ref # 92075)                     | 92075-1660    | 1        |
| DAMPER,FUEL TANK (Ref # 92160)           | 92160-1236    | 2        |
| DAMPER (Ref # 92160A)                    | 92160-1255    | 1        |
| BOLT-FLANGED-SMALL (Ref # 132)           | 132G0612      | 2        |
| BOLT-FLANGED-SMALL (Ref # 132A)          | 132G0630      | 1        |
| BOLT-UPSET-WSP (Ref # 187)               | 187B0616      | 2        |