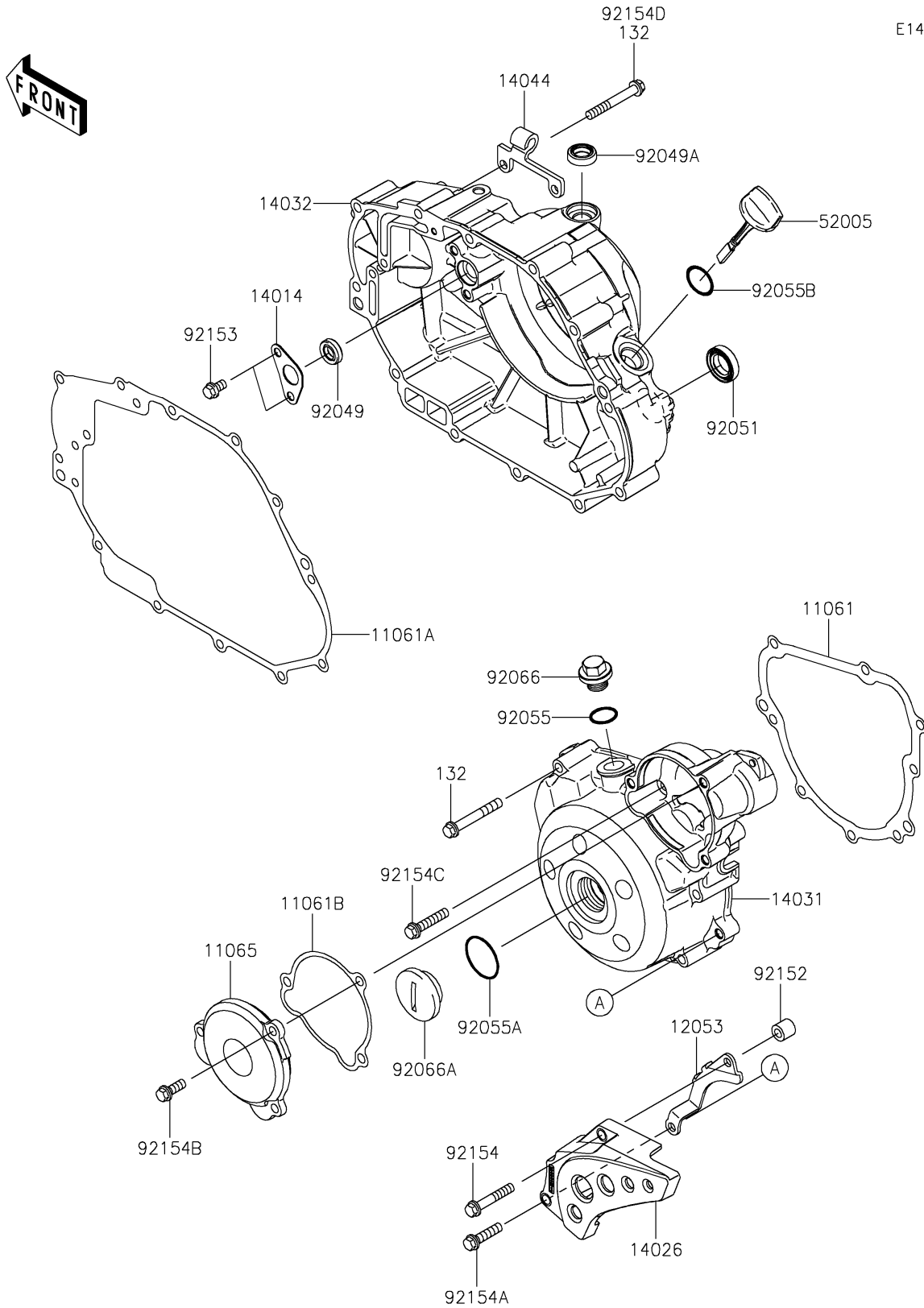


2020 KLX®150L PARTS DIAGRAM

Engine Cover(s)

E1431



2020 KLX®150L PARTS LIST

Engine Cover(s)

| ITEM NAME | PART NUMBER | QUANTITY |
|---|-------------|----------|
| GASKET,GENERATOR COVER (Ref # 11061) | 11061-0400 | 1 |
| GASKET,CLUTCH COVER (Ref # 11061A) | 11061-0401 | 1 |
| GASKET (Ref # 11061B) | 11061-0865 | 1 |
| CAP (Ref # 11065) | 11065-0801 | 1 |
| GUIDE-CHAIN (Ref # 12053) | 12053-0262 | 1 |
| BOLT-FLANGED-SMALL,6X45 (Ref # 132) | 132BA0645 | 6 |
| PLATE-POSITION (Ref # 14014) | 14014-1153 | 1 |
| COVER-CHAIN (Ref # 14026) | 14026-0103 | 1 |
| COVER-GENERATOR (Ref # 14031) | 14031-0116 | 1 |
| COVER-CLUTCH (Ref # 14032) | 14032-0573 | 1 |
| HOLDER-CABLE (Ref # 14044) | 14044-0572 | 1 |
| GAUGE,OIL LEVEL (Ref # 52005) | 52005-0724 | 1 |
| SEAL-OIL,10X18X5 (Ref # 92049) | 92049-0104 | 1 |
| SEAL-OIL,12X20X5.5 (Ref # 92049A) | 92049-0150 | 1 |
| SEAL-OIL,TB16267 (Ref # 92051) | 92051-003 | 1 |
| RING-O,14.8X2.4 (Ref # 92055) | 92055-0194 | 1 |
| RING-O,25.7X2.4 (Ref # 92055A) | 92055-0763 | 1 |
| RING-O,20X2 (Ref # 92055B) | 92055-0764 | 1 |
| PLUG,14X10 (Ref # 92066) | 92066-0724 | 1 |
| PLUG,GENERATOR COVER CAP (Ref # 92066A) | 92066-1565 | 1 |
| COLLAR,6.5X12X11 (Ref # 92152) | 92152-0692 | 1 |
| BOLT,6X10 (Ref # 92153) | 92153-1140 | 2 |
| BOLT (Ref # 92154) | 92154-1134 | 1 |
| BOLT,FLANGED,6X25 (Ref # 92154A) | 92154-1156 | 1 |
| BOLT,FLANGED,6X16 (Ref # 92154B) | 92154-1157 | 3 |
| BOLT,FLANGED,6X30 (Ref # 92154C) | 92154-1159 | 2 |
| BOLT,FLANGED,6X45 (Ref # 92154D) | 92154-4024 | 12 |