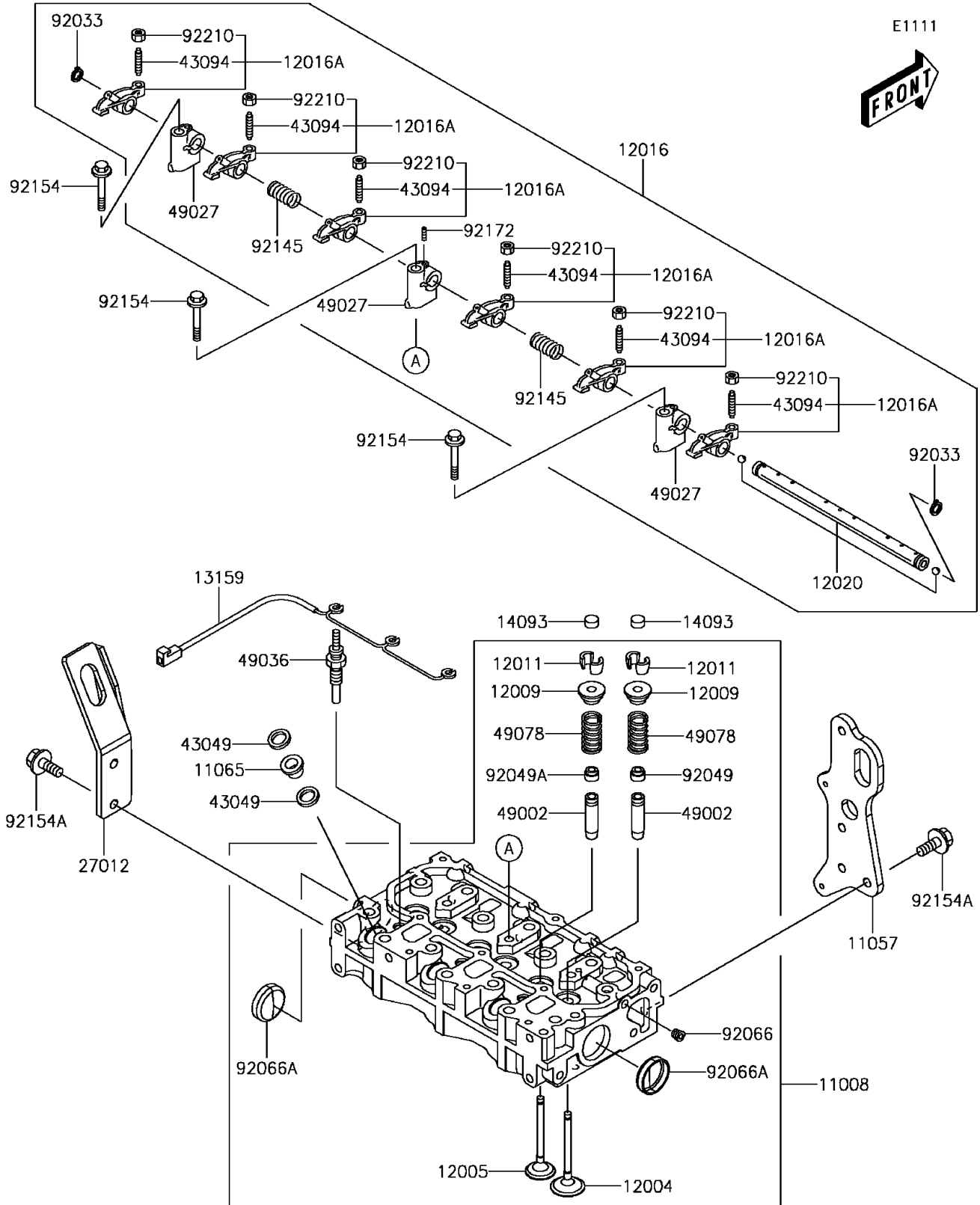


# 2016 MULE PRO-DXT™ EPS LE DIESEL PARTS DIAGRAM

## Cylinder Head



## 2016 MULE PRO-DXT™ EPS LE DIESEL PARTS LIST

### Cylinder Head

ITEM NAME	PART NUMBER	QUANTITY
HEAD-COMP-CYLINDER (Ref # 11008)	11008-0875	1
BRACKET,FRAME (Ref # 11057)	11057-1247	1
CAP,NOZZLE (Ref # 11065)	11065-0942	3
VALVE-INTAKE (Ref # 12004)	12004-0739	3
VALVE-EXHAUST (Ref # 12005)	12005-0759	3
RETAINER-VALVE SPRING (Ref # 12009)	12009-0029	6
COLLET (Ref # 12011)	12011-0004	12
ARM-ROCKER (Ref # 12016)	12016-0044	1
ARM-ROCKER (Ref # 12016A)	12016-0045	6
SHAFT-ROCKER (Ref # 12020)	12020-0018	1
CONNECTOR,PLUG-GLOW (Ref # 13159)	13159-0019	1
COVER,VALVE (Ref # 14093)	14093-0440	6
HOOK (Ref # 27012)	27012-0819	1
PACKING,NOZZLE (Ref # 43049)	43049-0037	6
ADJUSTER,VALVE (Ref # 43094)	43094-0006	6
GUIDE-VALVE (Ref # 49002)	49002-0032	6
HOLDER-ROCKER (Ref # 49027)	49027-0001	3
PLUG-GLOW (Ref # 49036)	49036-0002	3
SPRING-ENGINE VALVE (Ref # 49078)	49078-0731	6
RING-SNAP (Ref # 92033)	92033-0773	2
SEAL-OIL,INTAKE (Ref # 92049)	92049-0789	3
SEAL-OIL,EXHAUST (Ref # 92049A)	92049-0790	3
PLUG (Ref # 92066)	92066-0847	1
PLUG (Ref # 92066A)	92066-0852	2
SPRING (Ref # 92145)	92145-1711	2
BOLT,FLANGED,8X40 (Ref # 92154)	92154-1987	3
BOLT,FLANGED,8X16 (Ref # 92154A)	92154-2071	5
SCREW,5X16 (Ref # 92172)	92172-0984	1
NUT,8MM (Ref # 92210)	92210-1468	6