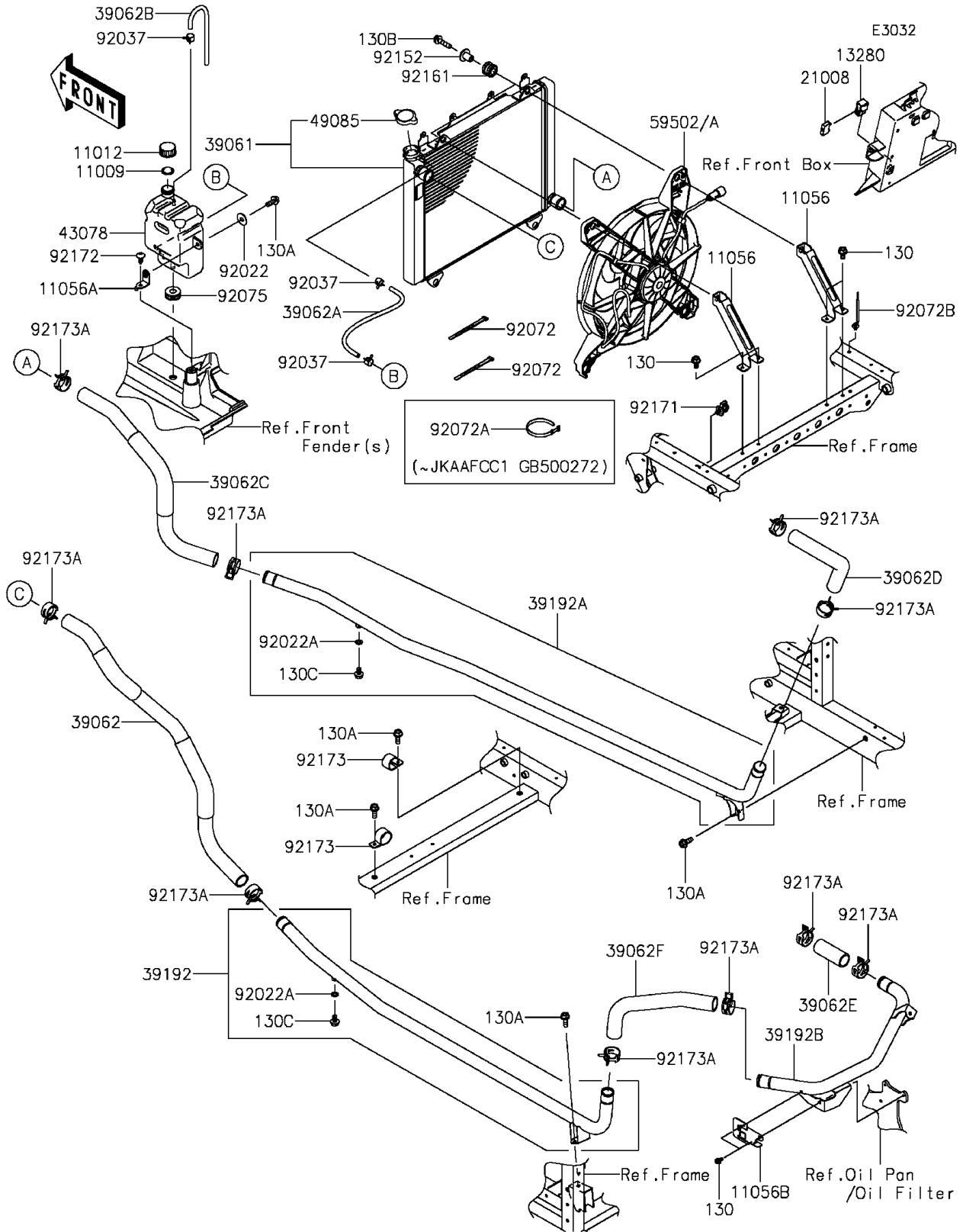


# 2016 MULE PRO-DXT™ EPS LE DIESEL PARTS DIAGRAM

## Radiator



## 2016 MULE PRO-DXT™ EPS LE DIESEL PARTS LIST

### Radiator

ITEM NAME	PART NUMBER	QUANTITY
GASKET,RESERVOIR TANK CAP (Ref # 11009)	11009-1145	1
CAP (Ref # 11012)	11012-1084	1
BRACKET,RADIATOR (Ref # 11056)	11056-2833	2
BRACKET,RESERVOIR (Ref # 11056A)	11056-3856	1
BRACKET,HARNESS (Ref # 11056B)	11056-7479	1
BOLT-FLANGED,6X12 (Ref # 130)	130BA0612	6
HOLDER,BREAKER (Ref # 13280)	13280-0082	1
BREAKER,RAD. FAN,20A (Ref # 21008)	21008-0554	1
RADIATOR-ASSY (Ref # 39061)	39061-0706	1
HOSE-COOLING,RADIATOR IN (Ref # 39062)	39062-0650	1
HOSE-COOLING,RAD.-RESERVOIR (Ref # 39062A)	39062-0657	1
HOSE-COOLING,OVER FLOW (Ref # 39062B)	39062-0696	1
HOSE-COOLING,RADIATOR OUT (Ref # 39062C)	39062-0697	1
HOSE-COOLING,ENGINE IN (Ref # 39062D)	39062-0713	1
HOSE-COOLING,ENGINE OUT (Ref # 39062E)	39062-0714	1
HOSE-COOLING,ENGINE OUT (Ref # 39062F)	39062-0715	1
PIPE-WATER,LH (Ref # 39192)	39192-0575	1
PIPE-WATER,RH (Ref # 39192A)	39192-0591	1
PIPE-WATER,CNT (Ref # 39192B)	39192-0593	1
RESERVOIR (Ref # 43078)	43078-0571	1
CAP-ASSY-PRESSURE (Ref # 49085)	49085-0005	1
FAN-ASSY (Ref # 59502)	59502-0566	1
FAN-ASSY (Ref # 59502A)	59502-0609	1
WASHER,PLAIN,6MM (Ref # 92022)	92022-165	1
WASHER,6.2X11X1 (Ref # 92022A)	92022-304	2
CLAMP,TUBE (Ref # 92037)	92037-1461	3
BAND,L=123 (Ref # 92072)	92072-030	2
BAND,L=186 (Ref # 92072A)	92072-056	1
BAND (Ref # 92072B)	92072-1414	1

## 2016 MULE PRO-DXT™ EPS LE DIESEL PARTS LIST

### Radiator

ITEM NAME	PART NUMBER	QUANTITY
DAMPER (Ref # 92075)	92075-1185	1
COLLAR (Ref # 92152)	92152-1512	4
DAMPER (Ref # 92161)	92161-1349	4
CLAMP (Ref # 92171)	92171-0453	1
SCREW,6X16 (Ref # 92172)	92172-0284	1
CLAMP (Ref # 92173)	92173-1204	2
CLAMP,28.6MM (Ref # 92173A)	92173-1205	10
BOLT-FLANGED,6X16 (Ref # 130A)	130BA0616	5
BOLT-FLANGED,6X25 (Ref # 130B)	130BA0625	4
BOLT-FLANGED,6X10 (Ref # 130C)	130BB0610	2