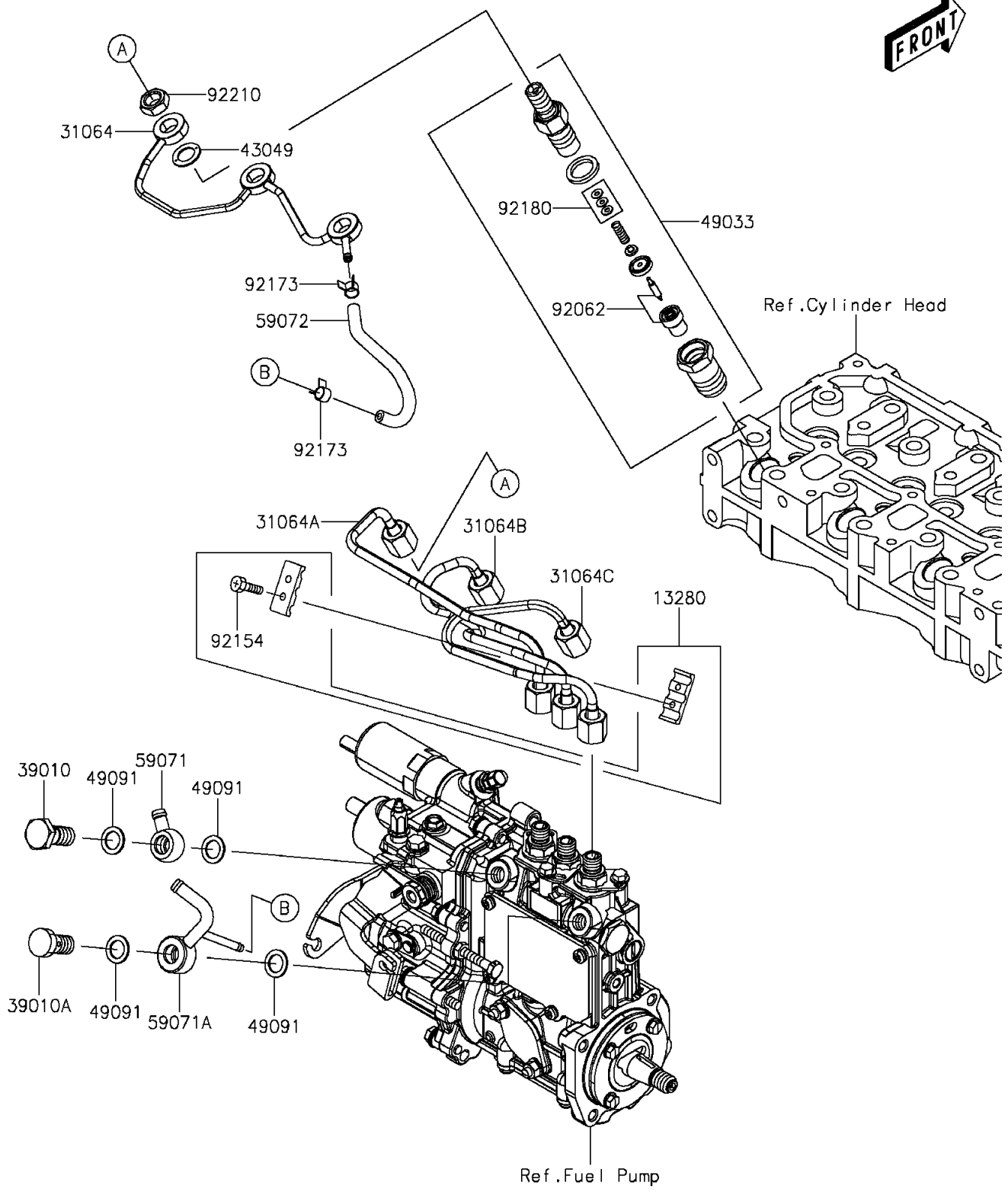


# 2016 MULE PRO-DX™ DIESEL PARTS DIAGRAM

## Fuel Injection

E1530



## 2016 MULE PRO-DX™ DIESEL PARTS LIST

### Fuel Injection

| ITEM NAME                               | PART NUMBER | QUANTITY |
|---|-------------|----------|
| HOLDER (Ref # 13280)                    | 13280-0862  | 1        |
| PIPE-COMP,RETURN (Ref # 31064)          | 31064-0681  | 1        |
| PIPE-COMP,INJECTION,NO.1 (Ref # 31064A) | 31064-0682  | 1        |
| PIPE-COMP,INJECTION,NO.2 (Ref # 31064B) | 31064-0683  | 1        |
| PIPE-COMP,INJECTION,NO.3 (Ref # 31064C) | 31064-0684  | 1        |
| BOLT-EYE,PIPE JOINT (Ref # 39010)       | 39010-0001  | 1        |
| BOLT-EYE,PIPE JOINT (Ref # 39010A)      | 39010-0002  | 1        |
| PACKING (Ref # 43049)                   | 43049-0045  | 3        |
| NOZZLE-INJECTION (Ref # 49033)          | 49033-0039  | 3        |
| WASHER-SEAL (Ref # 49091)               | 49091-0007  | 4        |
| JOINT (Ref # 59071)                     | 59071-0738  | 1        |
| JOINT,OVER FLOW (Ref # 59071A)          | 59071-0739  | 1        |
| JOINT-EYE (Ref # 59072)                 | 59072-0004  | 1        |
| NOZZLE (Ref # 92062)                    | 92062-0038  | 3        |
| BOLT,4X14 (Ref # 92154)                 | 92154-2115  | 2        |
| CLAMP (Ref # 92173)                     | 92173-1551  | 2        |
| SHIM,SET (Ref # 92180)                  | 92180-0971  | 3        |
| NUT (Ref # 92210)                       | 92210-1469  | 3        |