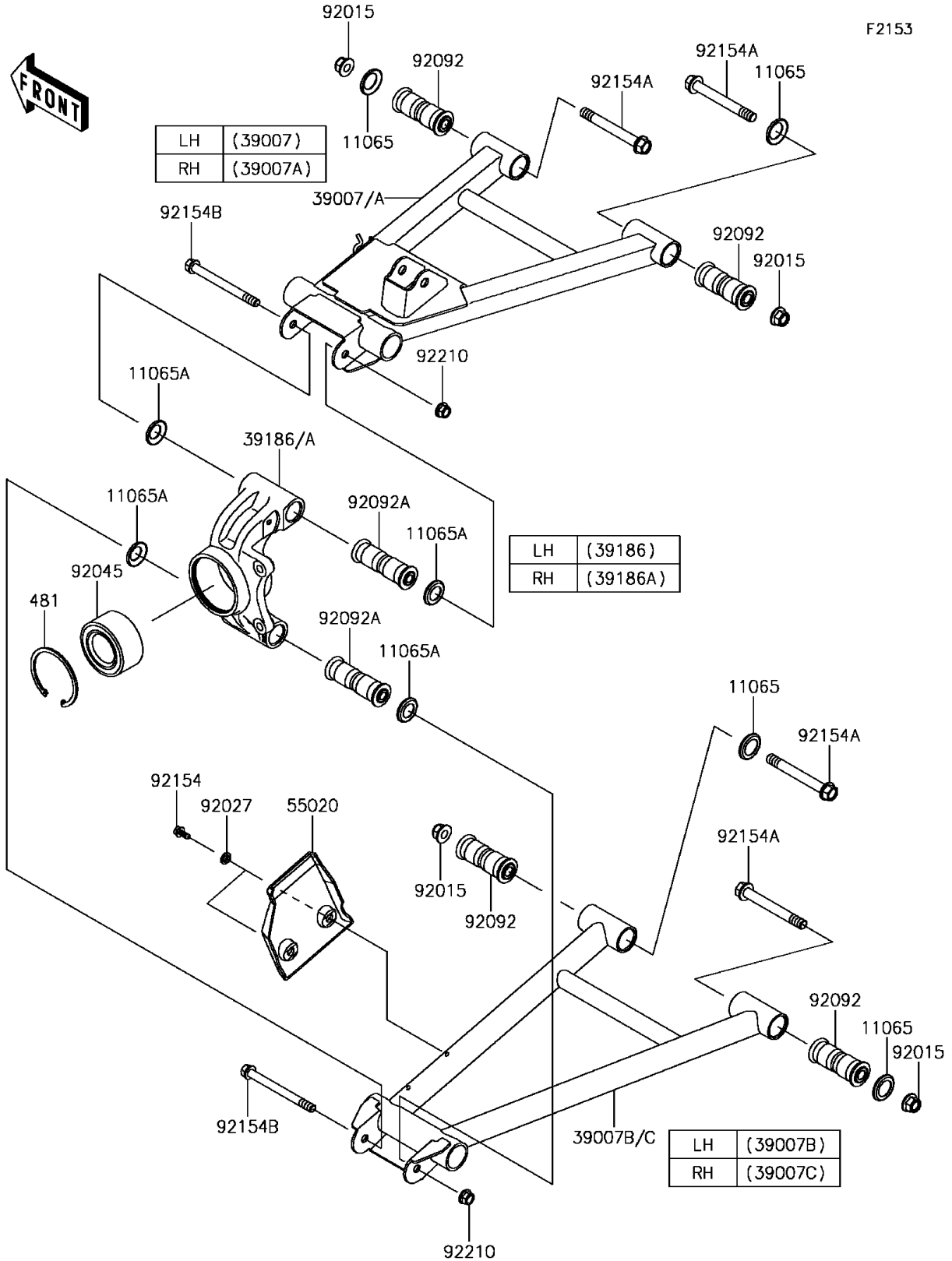


# 2017 Mule PRO-FXT Ranch Edition PARTS DIAGRAM

## Rear Suspension



## 2017 Mule PRO-FXT Ranch Edition PARTS LIST

### Rear Suspension

| ITEM NAME                                | PART NUMBER | QUANTITY |
|--|-------------|----------|
| CAP,ARM (Ref # 11065)                    | 11065-0838  | 8        |
| CAP (Ref # 11065A)                       | 11065-0849  | 8        |
| ARM-SUSP,RR,UPP,LH (Ref # 39007)         | 39007-0379  | 1        |
| ARM-SUSP,RR,UPP,RH (Ref # 39007A)        | 39007-0380  | 1        |
| ARM-SUSP,RR,LWR,LH (Ref # 39007B)        | 39007-0381  | 1        |
| ARM-SUSP,RR,LWR,RH (Ref # 39007C)        | 39007-0382  | 1        |
| KNUCKLE,RR,LH (Ref # 39186)              | 39186-0317  | 1        |
| KNUCKLE,RR,RH (Ref # 39186A)             | 39186-0318  | 1        |
| CIRCLIP-TYPE-C (Ref # 481)               | 481J7500    | 2        |
| GUARD,RR CVJ (Ref # 55020)               | 55020-0931  | 2        |
| NUT,LOCK,FLANGED,12MM (Ref # 92015)      | 92015-1433  | 8        |
| COLLAR,L=4.6 (Ref # 92027)               | 92027-1168  | 4        |
| BEARING-BALL,40X74X36 (Ref # 92045)      | 92045-0763  | 2        |
| BUSHING-RUBBER,12X20X78 (Ref # 92092)    | 92092-0028  | 8        |
| BUSHING-RUBBER,10.1X17X88 (Ref # 92092A) | 92092-0029  | 4        |
| BOLT,6X15.6 (Ref # 92154)                | 92154-1250  | 4        |
| BOLT,FLANGED,12X100 (Ref # 92154A)       | 92154-1318  | 8        |
| BOLT,FLANGED,10X110 (Ref # 92154B)       | 92154-1353  | 4        |
| NUT,LOCK,FLANGED,10MM (Ref # 92210)      | 92210-0276  | 4        |