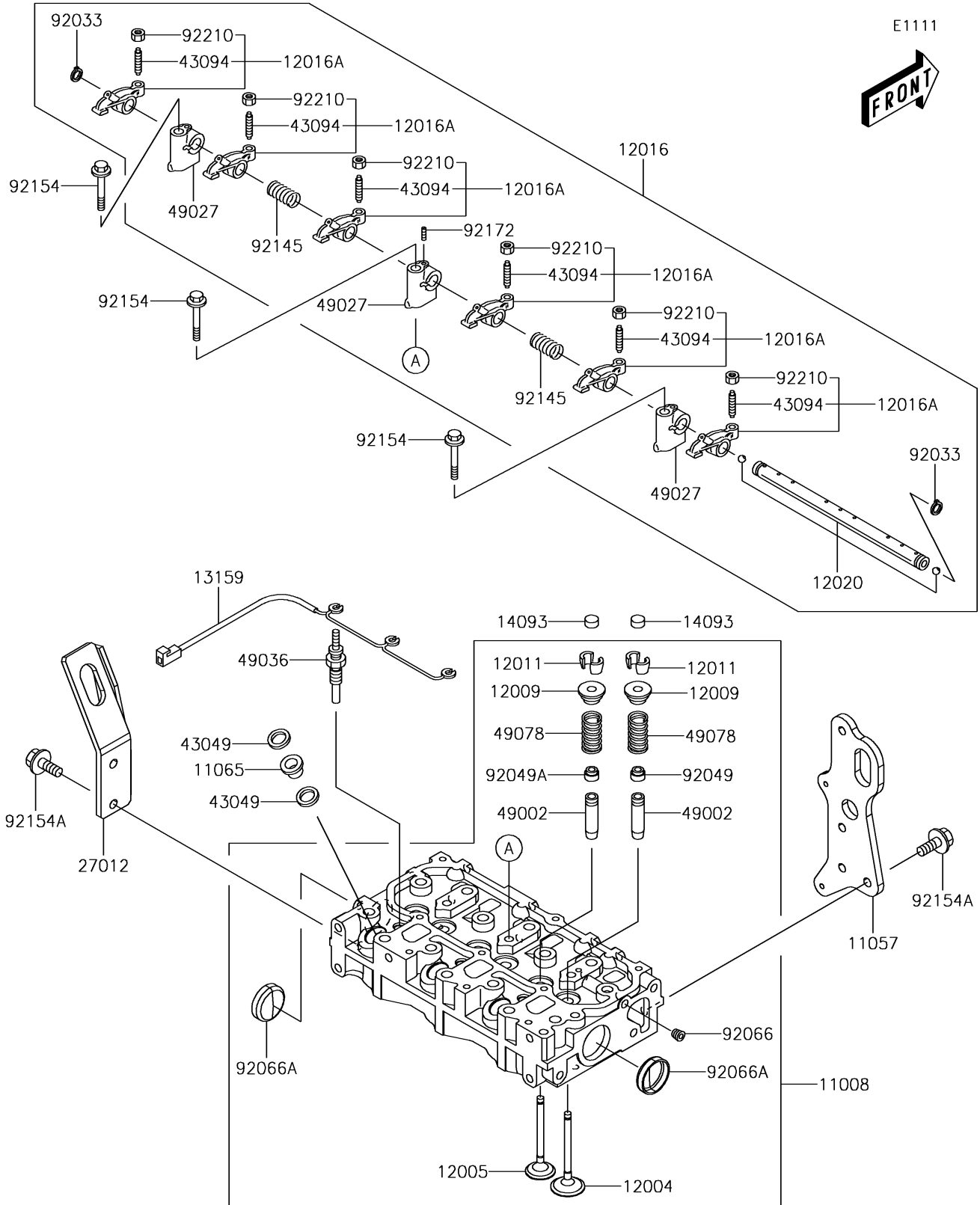


2018 MULE PRO-DXT™ PARTS DIAGRAM

Cylinder Head



2018 MULE PRO-DXT™ PARTS LIST

Cylinder Head

| ITEM NAME | PART NUMBER | QUANTITY |
|-------------------------------------|-------------|----------|
| HEAD-COMP-CYLINDER (Ref # 11008) | 11008-0875 | 1 |
| BRACKET,FRAME (Ref # 11057) | 11057-1247 | 1 |
| CAP,NOZZLE (Ref # 11065) | 11065-0942 | 3 |
| VALVE-INTAKE (Ref # 12004) | 12004-0739 | 3 |
| VALVE-EXHAUST (Ref # 12005) | 12005-0759 | 3 |
| RETAINER-VALVE SPRING (Ref # 12009) | 12009-0029 | 6 |
| COLLET (Ref # 12011) | 12011-0004 | 12 |
| ARM-ROCKER (Ref # 12016) | 12016-0044 | 1 |
| ARM-ROCKER (Ref # 12016A) | 12016-0045 | 6 |
| SHAFT-ROCKER (Ref # 12020) | 12020-0018 | 1 |
| CONNECTOR,PLUG-GLOW (Ref # 13159) | 13159-0019 | 1 |
| COVER,VALVE (Ref # 14093) | 14093-0440 | 6 |
| HOOK (Ref # 27012) | 27012-0819 | 1 |
| PACKING,NOZZLE (Ref # 43049) | 43049-0037 | 6 |
| ADJUSTER,VALVE (Ref # 43094) | 43094-0006 | 6 |
| GUIDE-VALVE (Ref # 49002) | 49002-0032 | 6 |
| HOLDER-ROCKER (Ref # 49027) | 49027-0001 | 3 |
| PLUG-GLOW (Ref # 49036) | 49036-0002 | 3 |
| SPRING-ENGINE VALVE (Ref # 49078) | 49078-0731 | 6 |
| RING-SNAP (Ref # 92033) | 92033-0773 | 2 |
| SEAL-OIL,INTAKE (Ref # 92049) | 92049-0789 | 3 |
| SEAL-OIL,EXHAUST (Ref # 92049A) | 92049-0790 | 3 |
| PLUG (Ref # 92066) | 92066-0847 | 1 |
| PLUG (Ref # 92066A) | 92066-0852 | 2 |
| SPRING (Ref # 92145) | 92145-1711 | 2 |
| BOLT,FLANGED,8X40 (Ref # 92154) | 92154-1987 | 3 |
| BOLT,FLANGED,8X16 (Ref # 92154A) | 92154-2071 | 5 |
| SCREW,5X16 (Ref # 92172) | 92172-0984 | 1 |
| NUT,8MM (Ref # 92210) | 92210-1468 | 6 |